

HP Designjet High Speed Dryer

User's Guide



HP Designjet High Speed Dryer

User's guide



Legal notices

The information contained in this document is subject to change without notice.

Hewlett-Packard makes no warranty of any kind with regard to this material, including, but not limited to, the implied warranties of merchantability and fitness for a particular purpose.

Hewlett-Packard shall not be liable for errors contained herein or for incidental or consequential damages in connection with the furnishing, performance, or use of this material.

No part of this document may be photocopied or translated to another language without the prior written consent of Hewlett-Packard Company.

This equipment has been tested and found to comply with the limits for a Class A digital device, pursuant to Part 15 of the FCC Rules. These limits are designed to provide reasonable protection against harmful interference when the equipment is operated in a commercial environment.

This equipment generates, uses, and can radiate radio frequency energy and, if not installed and used in accordance with the instruction manual, may cause harmful interference to radio communications.

Operation of this equipment in a residential area is likely to cause harmful interference in which case the user will be required to correct the interference at his own expense.

Table of contents

- 1 Introduction**
 - Safety precautions.....1
 - Warnings.....1
 - Cautions.....2
 - Handling precautions.....2
 - Power supply.....2
 - Dryer.....3
- 2 How to assemble the dryer**
 - Before assembly.....5
 - Assembly procedure.....6
- 3 How to install the dryer**
 - Installation space.....9
 - Power connection.....10
- 4 Dryer components**
 - Main external components.....13
 - Operation panel components.....14
- 5 How to use the dryer**
 - Basic operating procedure.....15
 - How to use the timer.....16
 - Efficient use of the dryer.....17
 - Direction of warm air.....17
 - Temperature setting.....18
 - Airflow setting.....18
- 6 Maintenance and cleaning**
 - Maintenance.....19
 - Cleaning.....19
- 7 Specifications**
- 8 Legal information**
 - Limited Warranty—HP Designjet High Speed Dryer.....23
 - A. Extent of HP Limited Warranty.....23

B. Limitations of liability.....	24
C. Local law.....	25
Regulatory notices.....	26
Regulatory Model Number.....	26
Regulatory statements.....	26
Europe.....	26
USA.....	26
Electro-Magnetic Compatibility (EMC).....	26
FCC statements (U.S.A.).....	26
Shielded cables.....	26
Canada.....	27
Normes de sécurité (Canada).....	27
DOC statement (Canada).....	27
Korea.....	27
Korean EMI statement.....	27
Taiwan.....	27
Taiwanese EMI statement.....	27
China.....	27
Chinese EMI statement.....	27
Germany.....	28
Sound.....	28
Address.....	28
Declaration of Conformity.....	28
declares that the product.....	28
conforms to the following product specifications.....	28
Additional information.....	29
Local contacts for regulatory topics only.....	29
Index.....	31

1 Introduction

Thank you for purchasing the HP Designjet High Speed Dryer (hereafter called the dryer) for the HP Designjet 8000s/9000s Printer series.

The dryer is used near the printer's paper outlet to dry the ink printed on the paper efficiently.

The dryer helps the printer to maximize its high-speed printing capability.

Features of the dryer:

- **Quick dry in response to high-speed printing**

Dries the paper by warm air from the paper outlet which is the paper path from the printer to the winding unit.

- **30-hour timer**

Sets drying time by the timer for up to 30 hours in units of one hour, allowing energy saving and highly efficient drying.



NOTE The dryer dries the paper, but it takes more time to dry the ink on the paper. If processes such as laminating are needed after printing, it is not recommended to do it just after the paper is discharged from the printer. Some paper types cannot dry completely even with the dryer. If this is the case, set a scan wait time from the operation panel of the printer.

Safety precautions

Warnings

Failure to follow these guidelines could result in serious personal injury or death.

- Use the power supply voltage specified on the nameplate. Doing otherwise may cause fire or electric shock.
- The operation of the dryer releases volatile organic compounds from the inks into the work area. Install and operate the dryer only in a well-ventilated area. In some cases, installing an extraction hood near the dryer may be necessary to remove ink fumes from the work area.
- Avoid overloading the printer's electrical outlet with multiple devices.
- Make sure the dryer is well grounded. If not, a short circuit may cause fire or electric shock.
- Do not disassemble or remodel the dryer. Do not repair the dryer by yourself. Doing so may cause fire, electric shock, or other accidents.

- Never use the dryer in a place of extreme humidity or any place where it can possibly be splashed by any liquids. If any liquids get into the dryer, it could lead to fire, electric shock, or other serious accidents.
- Do not remove the covers attached to the dryer, because the dryer contains high-voltage and extremely hot parts. Removal might result in an electric shock or burn.
- Do not allow metal or liquids to touch the internal parts of the dryer, which may cause fire, electric shock, or other accidents.
- Turn off the dryer and unplug the power cable from the power outlet in any of the following cases:
 - When placing your hands inside the dryer.
 - If there is smoke or an unusual smell coming from the dryer.
 - If the dryer is making an unusual noise not heard during normal operation.
 - If a piece of metal or a liquid (not part of cleaning and maintenance routines) touches internal parts of the dryer.
 - If an error code is displayed on the front panel that requires attention from a service engineer.
 - During an electrical (thunder/lightning) storm.
 - During a power failure.

Cautions

Failure to follow these guidelines could result in minor personal injury or damage to the product.

- Handle the dryer carefully because it is very heavy. If you drop it, it could cause personal injury.
- Do not install the dryer on an unsteady or inclining surface. If you drop the dryer or it falls over, it could cause personal injury.
- The dryer gets hot. Take care not to touch the hot parts to avoid a burn.

Handling precautions

Power supply

- Install the dryer near a power outlet that is easy to access.
- The dryer operates on 198–260 V, 50/60 Hz AC power, single-phase. Ensure that the power outlet meets the voltage and current requirements of the dryer. See [Specifications](#) for details.
- Do not connect a number of cables to a single socket. The dryer should be connected to a single outlet.

Dryer

- Do not wipe the cover with benzene or thinner. The coating may peel off or discolor.

Wipe the surface of the cover lightly with a soft cloth. If the cover is dirty, wipe the surface with a cloth dipped in neutral detergent mixed with water and then squeezed firmly.

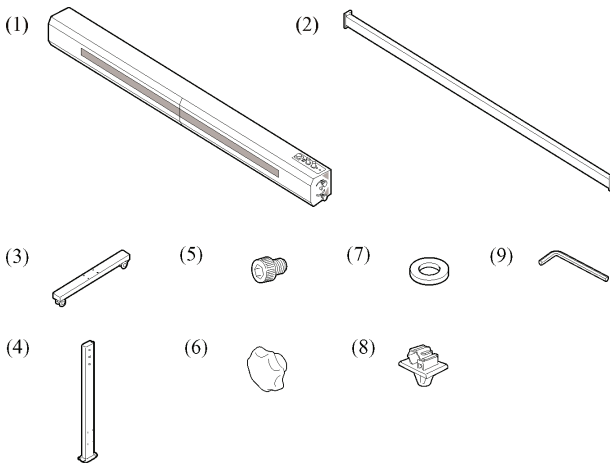
- The dryer is designed to be used only with the HP Designjet 8000s/9000s Printer series. Do not use it for other purposes.

2 How to assemble the dryer

Please read the assembly instructions closely in order to assemble the dryer correctly.

Before assembly

The dryer package contains the parts shown below. Make sure that all parts are present before starting to assemble them.



1. Dryer unit
2. Support stay
3. Foot with castor (2)
4. Stand (2)
5. M5 × 12L hexagon socket head bolt (16)
6. Knob (4)
7. Washer (8)

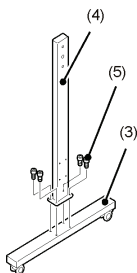
8. Power cable clamp
9. Hexagon bar wrench



NOTE A power cable in compliance with the regional power specification is contained in the accessories.

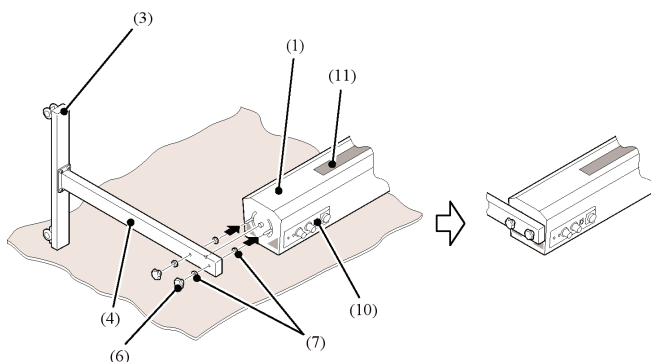
Assembly procedure

1. Put a cardboard or some other protective sheet on the floor in order to protect the surface of the dryer parts.
2. Secure a foot (3) to each stand (4) with the hexagon socket head bolts (5).



3. Place the dryer unit (1) on the protective sheet with its air outlet face up.

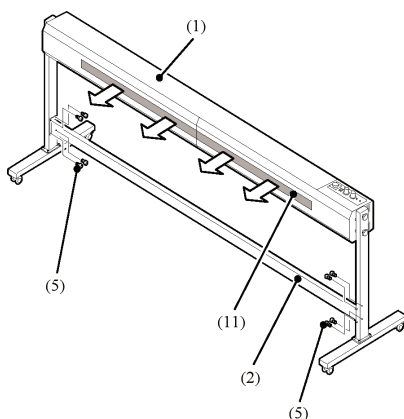
4. Insert the washers (7) into the left and right stands (4) from both sides, and secure the stands to the dryer unit (1) with the knobs (6) (two at each side) as shown below.



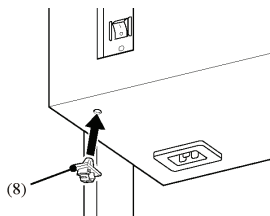
NOTE Attach the stands in such a way that the operation panel (10) on the dryer unit will be face up when the dryer is raised into its standing position. (11) is the air outlet.

Attach the stands in such a way that the holes in the stands face inwards; they will be used to attach the support stay.

5. When the stands are attached to the dryer unit, lift the whole dryer into the upright position, standing on its feet.
6. Secure the support stay (2) with four hexagon socket head bolts (5) at each side of the dryer unit.



7. Attach the power cable clamp by press-fitting it into the hole beside the power socket.

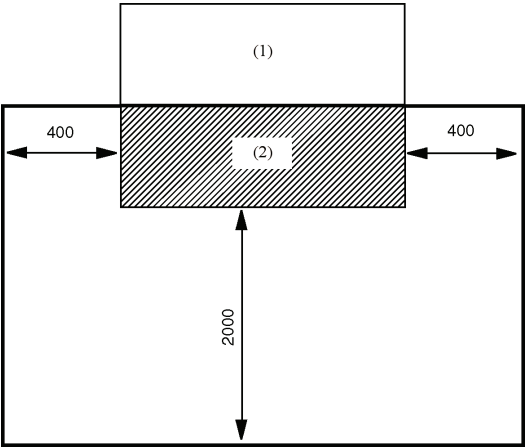


8. Check that all screws are tightly fastened.

3 How to install the dryer

Installation space

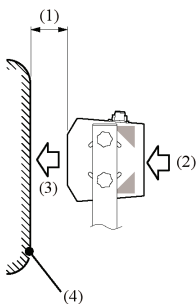
The following diagram shows the printer (1), the dryer (2), and the free space that should be left around the dryer in millimeters. The height of the dryer is 903 mm.



When the dryer is in use, the castors should be locked (1). Before moving the dryer, unlock the castors (2).

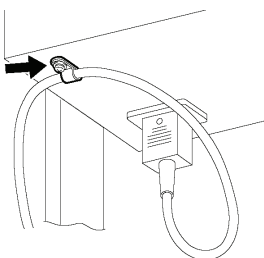


The dryer should be positioned at least 50 mm (1) from the paper emerging from the printer (4), with the air inlet (2) and outlet (3) positioned as shown below.

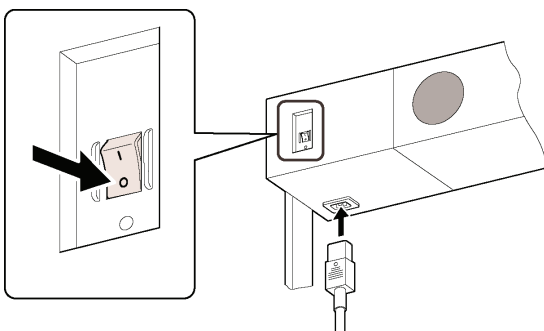


Power connection

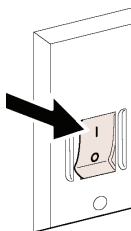
1. After installing the dryer, connect the power cable to the dryer's power socket.
2. Open the power cable clamp, pass the power cable through the clamp, close the clamp, and then clamp the cable. This prevents accidental unplugging.



3. Confirm that the dryer's power switch is off (O), then connect the other end of the power cable to a suitable power outlet (see power supply specifications in the previous section).

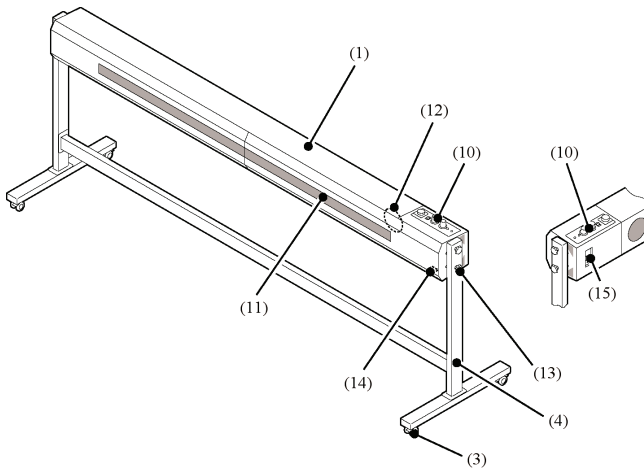


4. Turn on the dryer's power switch.



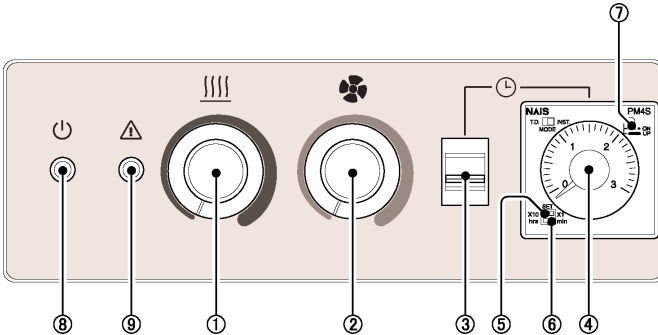
4 Dryer components

Main external components



1. The dryer unit blows warm air from the built-in heater and fans onto the paper to dry the ink.
3. One of the castors attached to the stand.
4. One leg of the stand.
10. The operation panel is described in more detail below.
12. One of the air intake fans.
13. The tilt adjusting knob adjusts the tilt angle of the dryer.
14. The power socket.
15. The power on/off switch.

Operation panel components



1. The heater temperature dial sets the heater temperature, between 40 and 60°C. The heater turns on and off automatically to maintain the set temperature.
2. The fan airflow dial sets the air volume of the fans.
3. The timer switch selects whether the timer is used or not.
4. The timer dial sets the period of the timer (0 to 30 hours).
5. The time multiplier selects the multiplier applied to the timer dial.
6. The time unit switch selects between hours and minutes for timer setting.
7. The timer light indicates the timer status.
 - A continuous red light indicates that the dryer has been turned off by the timer.
 - A blinking red light indicates that the dryer and the timer are both on.
 - No light indicates that the timer is off.
8. The power lamp indicates the dryer's power status.
 - A green light indicates that the dryer is on.
 - No light indicates that the dryer is off.
9. The error light indicates a dryer error with an orange light. There are three possible errors:
 - The thermistor line is open or short-circuited.
 - The fan drive voltage is less than 12 V.
 - The temperature of the top cover is too high.



CAUTION When the error light comes on, turn off the power switch immediately, unplug the power cable, then contact a service center.

Do not touch the dryer soon after turning it off, as the dryer will still be hot.

5 How to use the dryer

Basic operating procedure

1. Turn the temperature dial to the maximum, and the fan airflow dial to the middle.
2. Turn the power switch on.
 - The power light comes on.
 - The heater and the fans start working. The heater will take about ten minutes to reach the set temperature.
 - For heat-sensitive paper, reduce the temperature with the temperature dial.
 - Refer to the following table for the expected temperature of the airflow depending on the temperature dial and fan airflow dial settings, assuming a room temperature of 23°C and power supply of 230 V.

Units: °C	Temperature maximum	Temperature middle	Temperature minimum
Airflow maximum	50	49	37
Airflow middle	55	54	38
Airflow minimum	59	57	38

3. To change the dryer operation time, adjust the timer using the controls on the operation panel.
4. Before turning off the dryer, set the temperature dial to minimum and the fan airflow dial to maximum and let the dryer cool for three minutes.
5. Turn off the power switch (O). The heater and fans stop. Turn the power switch on again (I) with the timer switch on. The dryer will then enter the timer operation mode.



NOTE The dryer cannot be used with the take-up reel in tension mode. Please set the take-up reel in loose mode when using the dryer.



CAUTION Do not sit on the dryer or lean heavily on it. It is not strong enough to support your weight.

If the power switch is turned off without the cooling-off period advised above, or the power cable is accidentally disconnected, do not touch the dryer, which will still be hot.

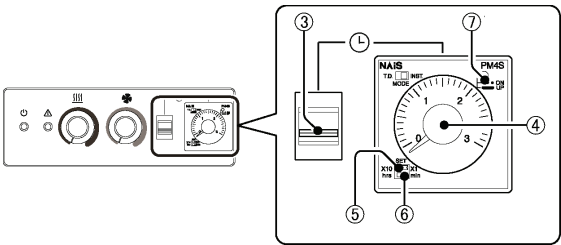
The ink does not dry immediately. Take care that freshly-printed paper does not touch anything.

The printed paper may be damaged if the dryer is too close to it. Make sure the dryer is at least 50 cm from the paper.

If the dryer's air inlet becomes clogged with dust, the internal temperature will rise, which may cause a failure. Clean the air inlet at regular intervals.

How to use the timer

The timer is used to limit the time of operation of the dryer. It can be set to a time of any length up to 30 hours, which is the default setting.



1. Turn on the dryer's power switch. The heater and fans start working.
2. To set the time limit for the dryer's operation, proceed as follows.
 - a. Choose a time range in the table below.
 - b. Select the time units (hours or minutes) with the time unit switch (6).
 - c. Select the time multiplier ($\times 10$ or $\times 1$) with the time multiplier switch (5).
 - d. Set the time with the timer dial (4).

Time range	0 – 3 min	0 – 30 min	0 – 3 hours	0 – 30 hours
Time units	min	min	hrs	hrs
Time multiplier	$\times 1$	$\times 10$	$\times 1$	$\times 10$
Timer dial	0 – 3	0 – 3	0 – 3	0 – 3

Examples:

	Example 1	Example 2	Example 3	Example 4
Intended time	150 sec	8 min	90 min	18 hours
Time units	min	min	hrs	hrs
Time multiplier	×1	×10	×1	×10
Timer dial setting	2.5	0.8	1.5	1.8



NOTE The timer dial is not a precision instrument and so you may notice a slight difference between the intended time and the actual time of dryer operation.

- Turn on the timer switch (3). The timer starts operating, and the timer light (7) blinks red.



Hint To change the timer setting after you have turned on the timer switch: turn off the timer switch, change the setting, then turn the switch back on.

- When the set time is reached, the timer turns off and the timer light shows red (no longer blinking). The heater turns off but the fans continue running to cool the dryer.

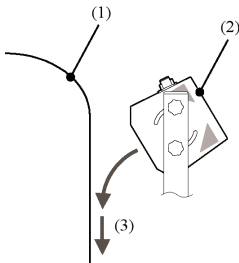


NOTE If you turn off the timer switch, the heater and fans will resume working normally. To turn off the dryer completely, use the dryer's power switch.

Efficient use of the dryer

Direction of warm air

Set the body of the dryer pointing slightly downward as shown below. Drying efficiency increases with warm air blowing along the surface of the paper.



Temperature setting

Drying efficiency depends primarily on the air temperature. For this reason, it is usually best to set the temperature dial to maximum. However, with some heat-sensitive paper types you may need to set the temperature lower to avoid stretching, wrinkling, or poor print quality.

Airflow setting

Drying efficiency tends to increase with the fan airflow, but too much airflow will reduce the air temperature, which lowers drying efficiency. For this reason, it is normally best to set the fan airflow dial to its middle setting.

6 Maintenance and cleaning

Maintenance

The printer and dryer should both be inspected periodically for defects. If defects are found, they can be repaired by on-site service or, if necessary, at a service center.

Cleaning

If the surface of the dryer becomes extremely dirty, you can wipe it with a soft cloth dipped in water and neutral detergent and squeezed tightly.



CAUTION Turn off the dryer's power switch before cleaning.

Do not use thinner, benzene, or other non-volatile solvents for cleaning the dryer: they may cause the dryer's surface coating to peel or discolor.

7 Specifications

Item	Specification
Dimensions	2416 (width) × 612 (depth) × 903 mm (height)
Weight	40 kg
Color	Carbonite black
Maximum paper width	1640 mm
Heater type	Sheathed heater
Drying method	Warm air
Paper transfer speed	16 m ² /h (paper width ≥ 50 in)
Warm-up time	≤ 10 min
Paper path	Winding or straight output
Heater temperature	40 – 60°C approx.
Fan flow control	Non-level control
Tilt angle	±45°
Timer setting range	0 – 30 h
Acquired standards	FCC Part 15B Class A EN55022 Class A UL

Item	Specification
	CSA
	CE
Power consumption	2750 W (230 V AC input)
Input power voltage	198 – 260 V AC
Input power frequency	50/60 Hz ±1 Hz
Instantaneous power failure	≥ 20 ms
Inrush current	≤ 35 A
Power cable	AC inlet cable (250 V/16 A)
Operating temperature	15 – 30°C
Storage temperature	5 – 35°C
Operating humidity	30 – 70% RH (no condensation)
Storage humidity	10 – 80% RH (no condensation)
Ventilation	Adequate airflow to completely exchange the air in the work area around the printer and dryer at least once every 3 minutes.
Installation space	Right/left ≥ 400 mm, rear ≥ 2000 mm

8 Legal information

Limited Warranty—HP Designjet High Speed Dryer

HP product	Limited Warranty Period
Hardware product	1 year from the date of hardware's purchase by the customer

A. Extent of HP Limited Warranty

1. This Hewlett-Packard (HP) Limited Warranty gives you, the end-customer, express limited warranty rights from HP. In addition, you may also have other legal rights under the applicable local law or special written agreement with HP.
2. HP warrants to you that the HP products specified above will be free from defects in materials and workmanship during the Limited Warranty Period specified above. The Limited Warranty Period starts on the date of purchase. Your dated sales or delivery receipt, showing the date of purchase of the product, is your proof of purchase date. You may be required to provide proof of purchase as a condition of receiving warranty service. You are entitled to warranty service according to the terms and conditions of this document if a repair or replacement of your HP Products is required within the Limited Warranty Period.
3. For software products, HP's Limited Warranty applies only to a failure to execute programming instructions. HP does not warrant that the operation of any product will be uninterrupted or error free.
4. HP's Limited Warranty covers only those defects that arise as a result of normal use of the HP products as defined in the user's guide, and does not apply to any:
 - a. Improper or inadequate maintenance;
 - b. Interfacing or parts not provided or supported by HP; or
 - c. Operation outside the product's specifications.

Routine printer maintenance operations in the HP Designjet High Speed Dryer, such as cleaning and preventive maintenance services (including parts contained in any preventive maintenance kit and HP service engineer visits), are not covered by HP's Limited Warranty.

5. Your exclusive remedies for defective HP products are the following:
- a. During the Limited Warranty Period, HP will replace any defective HP consumable product that is covered by this Limited Warranty, and deliver another product to you to replace the defective one.
 - b. During the Limited Warranty Period, HP, at its sole discretion, shall either repair on site or replace any defective hardware product or component part. If HP elects to replace any component part, HP will provide to you (i) a replacement part, in return for the defective one, and (ii) remote part installation assistance, if needed.
 - c. In the unlikely event that HP is unable to repair or replace, as applicable, a defective product that is covered by this Limited Warranty, HP shall, within a reasonable time after being notified of the defect, refund the purchase price for the product.
6. HP shall have no obligation to replace or refund until you return the defective hardware product or component part to HP. All components, parts, or hardware products removed under this Limited Warranty become the property of HP. Notwithstanding the above mentioned, HP may waive the requirement for you to return the defective part.
7. Unless otherwise stated, and to the extent permitted by local law, HP products may be manufactured using new materials or new and used materials equivalent to new in performance and reliability. HP may repair or replace products (i) with equivalent products to the products being repaired or replaced but which may have been subject to prior use; or (ii) with an equivalent product to an original product that has been discontinued.
8. THIS LIMITED WARRANTY IS APPLICABLE IN ALL COUNTRIES AND MAY BE ENFORCED IN ANY COUNTRY WHERE HP OR ITS AUTHORIZED SERVICE PROVIDERS OFFER WARRANTY SERVICE AND HP HAS MARKETED THIS PRODUCT, SUBJECT TO THE TERMS AND CONDITIONS SET FORTH IN THIS LIMITED WARRANTY. HOWEVER, WARRANTY SERVICE AVAILABILITY AND RESPONSE TIME MAY VARY FROM COUNTRY TO COUNTRY. HP WILL NOT ALTER FORM, FIT, OR FUNCTION OF THE PRODUCT TO MAKE IT OPERATE IN A COUNTRY FOR WHICH IT WAS NEVER INTENDED TO FUNCTION FOR LEGAL OR REGULATORY REASONS.
9. Contracts for additional services may be available for any authorized HP service facility where the listed HP product is distributed by HP or an authorized importer.
10. TO THE EXTENT ALLOWED BY LOCAL LAW, EXCEPT AS EXPRESSLY SET FORTH IN THIS LIMITED WARRANTY NEITHER HP NOR ITS THIRD PARTY SUPPLIERS MAKE ANY OTHER WARRANTY OR CONDITION OF ANY KIND, WHETHER EXPRESS OR IMPLIED, WITH RESPECT TO THE HP PRODUCTS, AND SPECIFICALLY DISCLAIM THE IMPLIED WARRANTIES OR CONDITIONS OF MERCHANTABILITY, SATISFACTORY QUALITY, AND FITNESS FOR A PARTICULAR PURPOSE.

B. Limitations of liability

TO THE EXTENT ALLOWED BY LOCAL LAW, EXCEPT FOR THE OBLIGATIONS SPECIFICALLY SET FORTH IN THIS LIMITED WARRANTY, IN NO EVENT SHALL HP OR ITS THIRD PARTY SUPPLIERS BE LIABLE FOR DIRECT, INDIRECT, SPECIAL, INCIDENTAL, OR CONSEQUENTIAL DAMAGES (INCLUDING ANY LOSS OF PROFITS OR SAVINGS), WHETHER BASED ON CONTRACT, TORT, OR ANY OTHER LEGAL THEORY AND WHETHER ADVISED OF THE POSSIBILITY OF SUCH DAMAGES.

C. Local law

1. This Limited Warranty gives you specific legal rights. You may also have other rights which vary from state to state in the United States, from province to province in Canada, and from country to country elsewhere in the world. You are advised to consult applicable state, province, or national laws for full determination of your rights.
2. To the extent that this Warranty Statement is inconsistent with local law, this Warranty Statement shall be deemed modified to be consistent with such local law. THE WARRANTY TERMS CONTAINED IN THIS LIMITED WARRANTY, EXCEPT TO THE EXTENT LAWFULLY PERMITTED, DO NOT EXCLUDE, RESTRICT, OR MODIFY AND ARE IN ADDITION TO THE MANDATORY STATUTORY RIGHTS APPLICABLE TO THE SALE OF THIS PRODUCT TO YOU.

Revision: December 2nd, 2005

Regulatory notices

Regulatory Model Number

For regulatory identification purposes, HP has assigned a Regulatory Model Number (RMN). The Regulatory Model Number for your product is as follows:

RMN	Product family
BCLAA-0601	HP Designjet High Speed Dryer

The Regulatory Model Number (RMN) should not be confused with the marketing name (HP Designjet High Speed Dryer) or product number.

Regulatory statements

Europe



WARNING! This is a class A product. In a domestic environment this product may cause radio interference, in which case the user may be required to take adequate measures.

USA

Electro-Magnetic Compatibility (EMC)

FCC statements (U.S.A.)

The U.S. Federal Communications Commission (in 47 cfr15.105) has specified that the following notices be brought to the attention of users of this product.

Shielded cables

Use of shielded data cables is required to comply with the Class A limits of Part 15 of the FCC Rules.



CAUTION Pursuant to Part 15.21 of the FCC Rules, any changes or modifications to this equipment not expressly approved by the Hewlett-Packard Company may cause harmful interference and void the FCC authorization to operate this equipment.

This equipment has been tested and found to comply with the limits for a Class A digital device, pursuant to part 15 of the FCC Rules. These limits are designed to provide reasonable protection against harmful interference in a commercial environment. This equipment generates, uses, and can radiate radio frequency energy and, if not installed and used in accordance with the instructions, may cause harmful interference to radio communications. Operation of this equipment in a residential area is likely to cause harmful interference, in which case users will be required to correct the interference at their own expense.

Canada

Normes de sécurité (Canada)

Le présent appareil numérique n'émet pas de bruits radioélectriques dépassant les limites applicables aux appareils numériques de Classe A prescrites dans le règlement sur le brouillage radioélectrique édicté par le Ministère des Communications du Canada.

DOC statement (Canada)

This digital apparatus does not exceed the Class A limits for radio noise emissions from digital apparatus set out in the Radio Interference Regulations of the Canadian Department of Communications.

Korea

Korean EMI statement

사용자 안내문 : A 급 기기

이 기기는 업무용으로 전자파적합등록을 받은 기기이오니, 판매자 또는 사용자는 이 점을 주의 하시기 바라며, 만약 잘못 구입 하셨을 때에는 구입한 곳에서 비업무용으로 교환 하시기 바랍니다.

Taiwan

Taiwanese EMI statement

警告使用者:這是甲類的資訊產品,在居住的環境中使用時,可能會造成射頻干擾,在這種情況下,使用者會被要求採取某些適當的對策。

China

Chinese EMI statement

此为A级产品,在生活环境中,该产品可能会造成无线电干扰。在这种情况下,可能需要用户对其干扰采取切实可行的措施。

Germany

Sound

Geräuschemission (Germany) LpA < 70 dB, am Arbeitsplatz, im Normalbetrieb, nach DIN45635 T. 19.

Address

Hewlett-Packard Company
Manager of Corporate Product Regulations
3000 Hanover Street
Palo Alto, CA 94304
650/857-1501

Declaration of Conformity

according to ISO/IEC Guide 22 and EN 45014

Supplier's name:	Hewlett-Packard Company
Supplier's address:	Avenida Graells, 501 08174 Sant Cugat del Vallès Barcelona, Spain

declares that the product

Regulatory Model Number ^(a) :	BCLAA-0601
Product family:	HP Designjet High Speed Dryer
Product options:	All

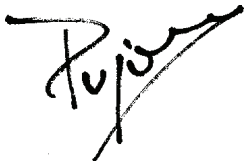
conforms to the following product specifications

Safety:	IEC 60950-1:2001 / EN 60950-1:2001
EMC:	CISPR 22:1997+A1:2000+A2:2002 / EN 55022:1998+A1:2000+A2:2003 Class A ^(a) EN 55024:1998+A1:2001+A2:2003 EN 61000-3-2:2000 / IEC 61000-3-3:2000 EN 61000-3-3:1995+A1:2001 / IEC 61000-3-3 / A1:2001 FCC Title 47 CFR, Part 15 Class A ^{(1) (2)}

Additional information

The product herewith complies with the requirements of the Low-Voltage Directive 73/23/EEC and the EMC Directive 89/336/EEC, and carries the CE marking accordingly.

1. This device complies with Part 15 of the FCC Rules. Operation is subject to the following two conditions:
 - This device may not cause harmful interference.
 - This device must accept any interference received, including interference that may cause undesired operation.
2. The product is assigned a Regulatory Model Number which stays with the regulatory aspect of the design. The Regulatory Model Number is the main product identifier in the regulatory documentation and test reports; this number should not be confused with the marketing name or the product numbers.



Josep-Maria Pujol

Hardware Quality Manager

Sant Cugat del Vallès (Barcelona)

November 30th, 2005

Local contacts for regulatory topics only

Contact in Europe: Hewlett-Packard GmbH, HQ-TRE, Herrenberger Strasse 140, 71034 Böblingen, Germany.

Contact in the USA: Hewlett-Packard Company, HPCC, 20555 S.H. 249 Houston, Texas 77070, USA.

Contact in Australia: Hewlett-Packard Australia Ltd, Product Regulations Manager, 31–41 Joseph Street, Blackburn, Victoria 3130, Australia.

