

Removal and Installation

8

Right Hand Cover 8-4
Front Panel Assembly 8-6
Right Hand Trim and Window Switch 8-7
Service Station Assembly 8-8
Drop Detector Assembly 8-10
Vacuum Fan 8-11
Paper-axis Motor Assembly 8-12
Left Hand Cover 8-13
Left Hand Trim Assembly 8-18
Ink Supply Station Assembly (ISS) 8-19
Air Pressurization System (APS) 8-20
Clutch Assembly and left hand miscellaneous parts 8-21
Tail Deflectors and Rear Platen (hp designjets 1050c/1055cm Only) 8-23
Left and Right Rear Covers 8-24
Electronics Module (hp designjets 1050c/1055cm Only) 8-25
Electrocover (hp designjets 1050c plus/1055cm plus Only) 8-28
Main PCA (hp designjets 1050c plus/1055cm plus Only) 8-31
Power Supply Unit (hp designjets 1050c plus/1055cm plus Only) 8-33
ISS PCA (hp designjets 1050c plus/1055cm plus Only) 8-34
Hard Disk Drive (hp designjets 1050c plus/1055cm plus Only) 8-35
Electronics Module Base (hp designjets 1050c plus/1055cm plus Only) 8-36
Media Sensor 8-37
Window 8-38
Top Cover 8-39
Back Cover 8-40
Scan-axis Motor Assembly 8-41
Encoder Strip 8-42
Tensioner 8-45
Trailing Cable 8-47
Cutter Assembly 8-50
Carriage Assembly and Belt 8-52
Tubes System Assembly 8-61
Ink Leak Detector Assembly (hp designjets 1050c and 1055cm only) 8-68
Front Platen Assembly 8-70
Platen Assembly 8-71
Paper Entry Assembly 8-72
Roller Guide 8-74
Media Holder Strip 8-77
Drive Roller 8-78
Center Guide 8-79
Pinch-Wheel Assembly and Cam 8-81

Introduction

This chapter is a step by step guide to the removal and installation of the key components in the printer. You may find it useful to tick off the steps as they are performed. Use the illustration at each procedure to identify the parts referred to in the text.

The procedures appear in order of removal. So the whole machine can be stripped down by starting at the beginning of this chapter and working through the subsequent procedures.

NOTE

Before using this chapter to remove and install a new component, always make sure that you have performed the relevant service test from Chapter 4. If the test passes you will not need to replace the component.

Safety Precautions

(Safety symbols - Immediately after the table of contents.)

Review WARNING and CAUTION symbols and instructions before you service the printer. Follow these warnings and cautions for your protection and to avoid damaging the printer.

WARNING



Serious shock hazard leading to death or injury may result if you do not take the following precautions:

Ensure that the ac power outlet (mains) has a protective earth (ground) terminal.

Switch the plotter off, and disconnect it from the power source prior to performing any maintenance.

Prevent water or other liquids from running onto electrical components or circuits, or through openings in the module.

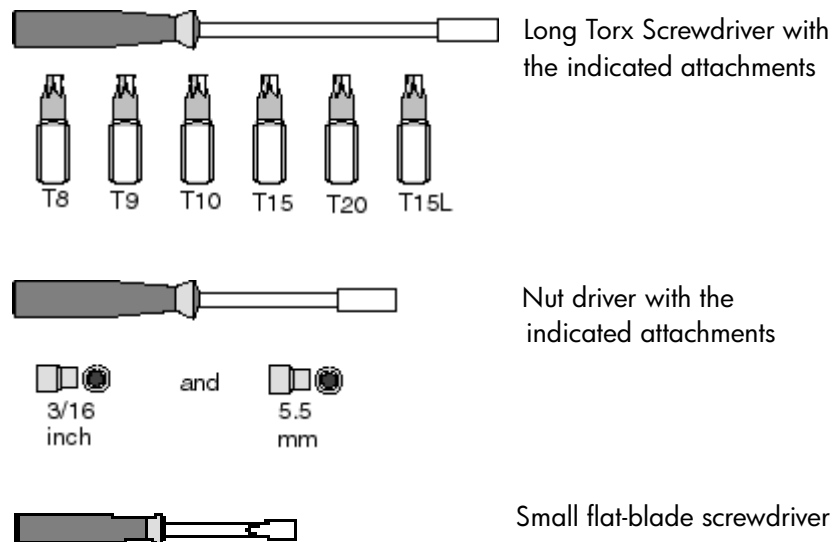
Electrostatic Discharge (ESD) Precautions

To prevent damage to the Printer circuits from high-voltage electrostatic discharge (ESD):

1. Do not wear clothing that is subject to static build-up.
2. Do not handle integrated circuits (ICs) in carpeted areas.
3. Do not remove an IC or a printed circuit assembly (PCA) from its conductive foam pad or conductive packaging until you are ready to install it.
4. Ground (earth) your body while disassembling and working on the Printer.
5. After removing a cover from the Printer, attach an earthing (ground) lead between the PCA common and earth ground. Touch all tools to earth ground to remove static charges before using them on the Printer.
6. After removing any PCA from the Printer, place it on a conductive foam pad or into its conductive packaging to prevent ESD damage to any ICs on the PCA.

Required Tools

The following tools are required to disassemble and repair the Printer.



Right Hand Cover

Refer to Figure 1

Removal

1. Remove the Printhead Cleaners (Refer to the User Guide).

NOTE

Make sure that the Service Station Carriage is pushed to the back before trying to remove the Right Cover.

WARNING

Switch off the printer and remove the power cable.

1. Remove the following:

1. "Electronics Module Left Rear Cover" see page 8-24.

NOTE

Make sure you take care when removing the ferrite which is attached to the sideplate with a cable tie.

2. Disconnect the front panel cable from position **P16 FRONT PANEL** on the electronics module.
3. Disconnect the aerosol fan cable from position **P7 AEROSOL FAN** on the electronics module.
4. Remove two T-15 screws (item 1) from the right hand trim (item 2).

NOTE

Be careful not to drop the cover (item 3) once the securing fasteners have been removed. Support the cover throughout the next step.

5. Remove two T-15 screws (item 4) from the rear of the right hand cover which are securing the cover to the right hand side chassis.
6. Remove the right hand cover (item 3) by making sure you:
 - a carefully pull the front panel cable and the aerosol fan cable from a hole in the right hand side chassis.
 - b disconnect the service station door sensor cable, which hangs down from the service station cable.

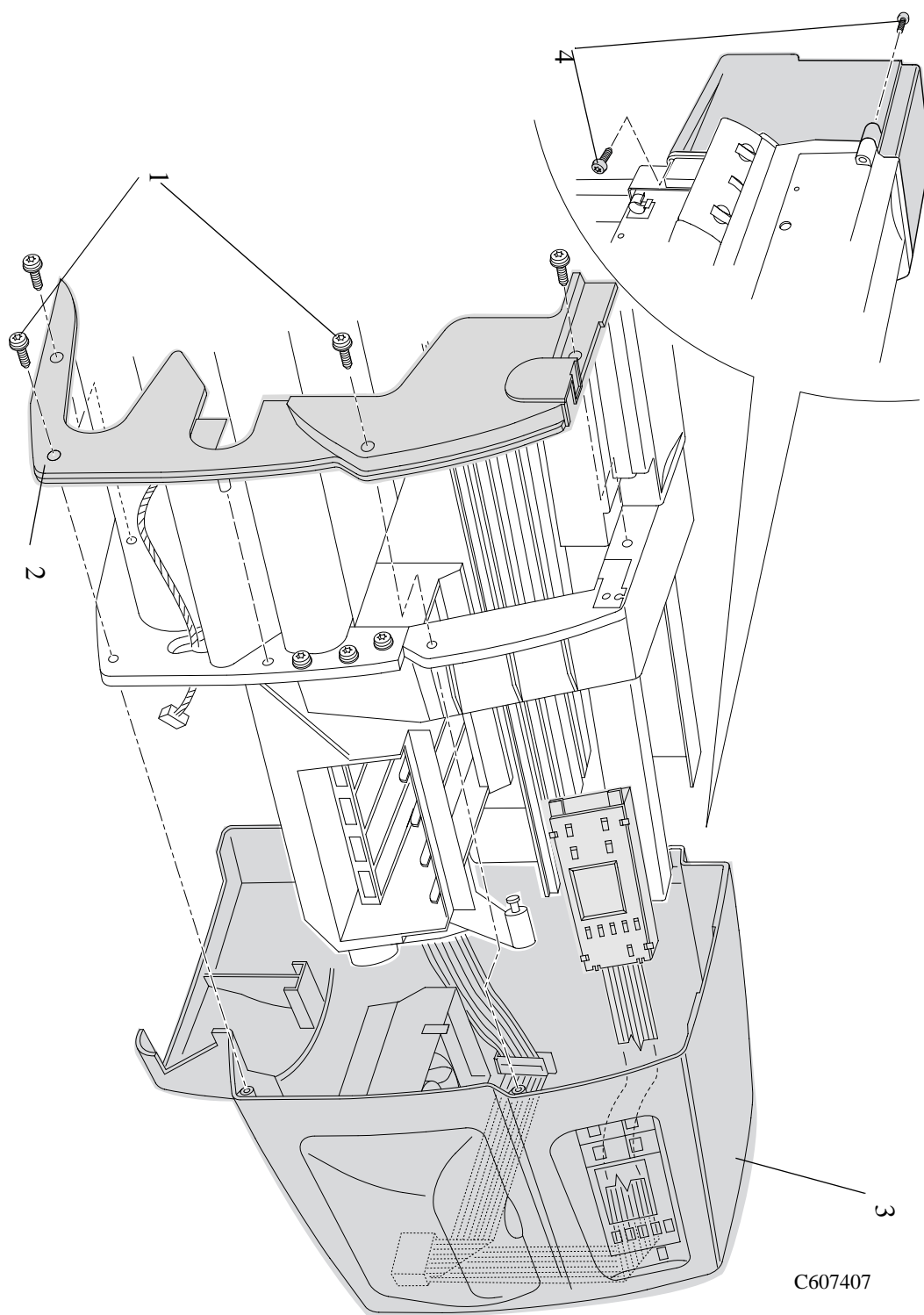


Figure 1: Right Cover

Installation of the Right Hand Cover

NOTE

Ensure the front panel cable and the aerosol fan cables are secured inside the right hand cover with cable clamps and retaining clips.

NOTE

At the rear of the right hand side chassis is a hole for the cables to go through. If the cables are not through this hole when the cover is in place on the printer the cover cannot be properly installed.

Front Panel Assembly

Removal

1. Remove the Printhead Cleaners (Refer to the User Guide).

WARNING

Switch off the printer and remove the power cable.

1. Remove the following:
 1. "Right Hand Cover" see page 8-4.
2. The Front Panel Assembly and the Front-Panel Assembly Cable can be removed by releasing them from the retaining clips (item 1) and cable clamps (item 2) inside the Right Hand Cover (item 3) (Refer to Figure 2).

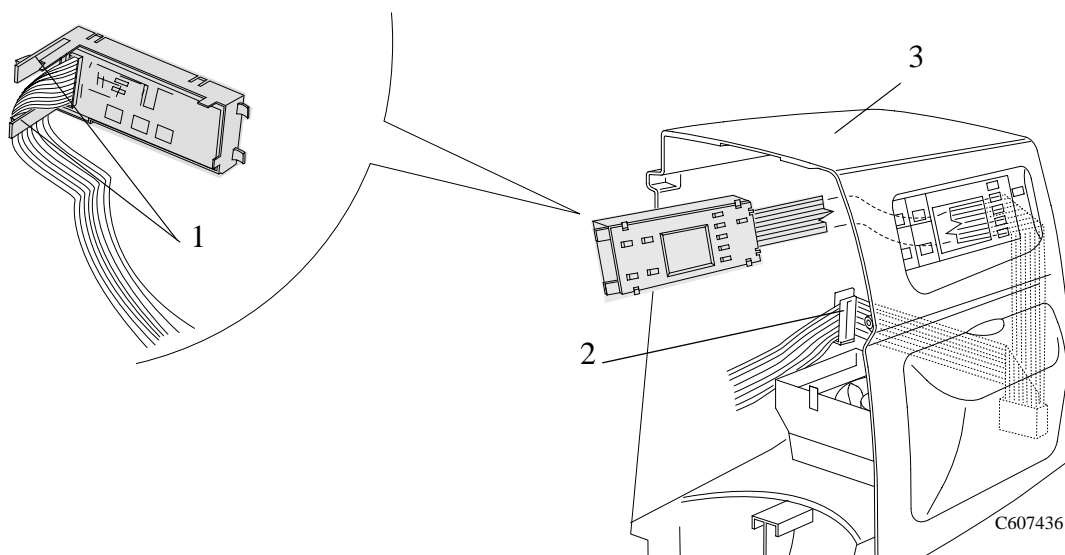


Figure 2: Front Panel

Right Hand Trim and Window Switch

Refer to Figure 3.

Removal

WARNING

Switch off the printer and remove the power cable.

1. Remove the following:
 1. "Right Hand Cover" see page 8-4.
2. Disconnect the Window Switch cable from the Service Station cable.
3. Remove 2 screws (Item 1) that attach the Right Hand Trim (Item 2) to the Printer.
4. Remove the Right Hand Trim (Item 2) from the Printer.

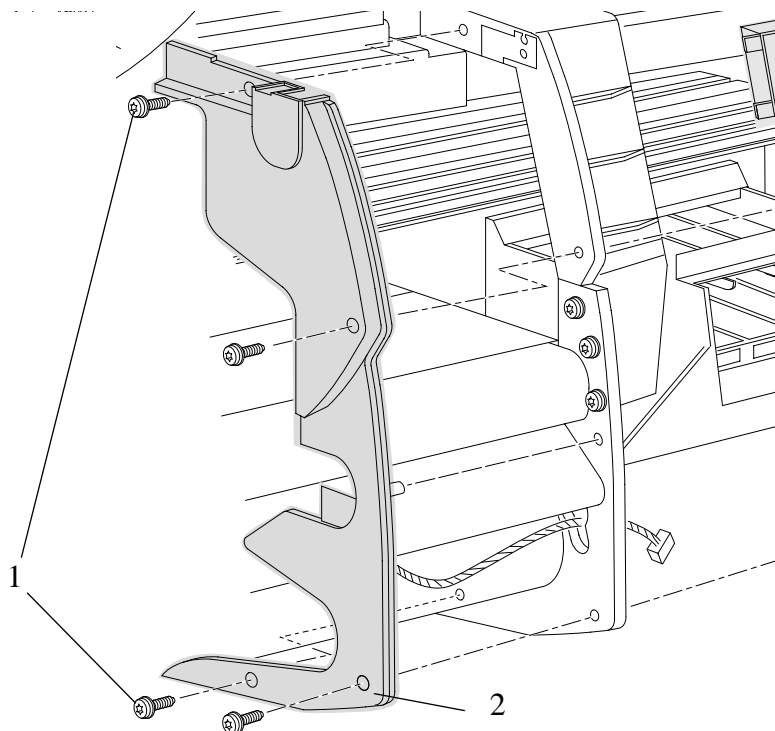


Figure 3: Right Hand Trim

Service Station Assembly

Refer to Figure 4.

Removal

WARNING

Switch off the printer and remove the power cord.

1. Remove the Printhead Cleaners (Refer to the User Guide).
2. Remove the following
 1. "Right Hand Cover" see page 8-4.
3. Disconnect the service station cable from the electronics module out of position **SERVICE STATION**.
4. Disconnect the window switch and right door switch cables from the service station cable.
5. Unclip the Scan-Axis Motor cable from the Service Station.
6. Manually slide the carriage assembly to the middle of the printer.

NOTE

Be careful not to drop the service station (item 2) once the securing fasteners have been removed. Support the service station throughout the following steps.

7. Between the carriage assembly slider rods there are two holes. These holes give you access to two T-15 screws (item 3). Remove the two T-15 screws.
8. Loosen the T-15 screw (item 1) securing the service station to the side of the printer. This screw is long and does NOT need to be fully loosened.

NOTE

When removing the Service Station, make sure that you release the Paper-axis Motor cable from the clip that is located on the Service Station.

9. Lift the service station (item 2) off the loosened screw (item 1) and standing in front of the printer, slide the assembly towards you.

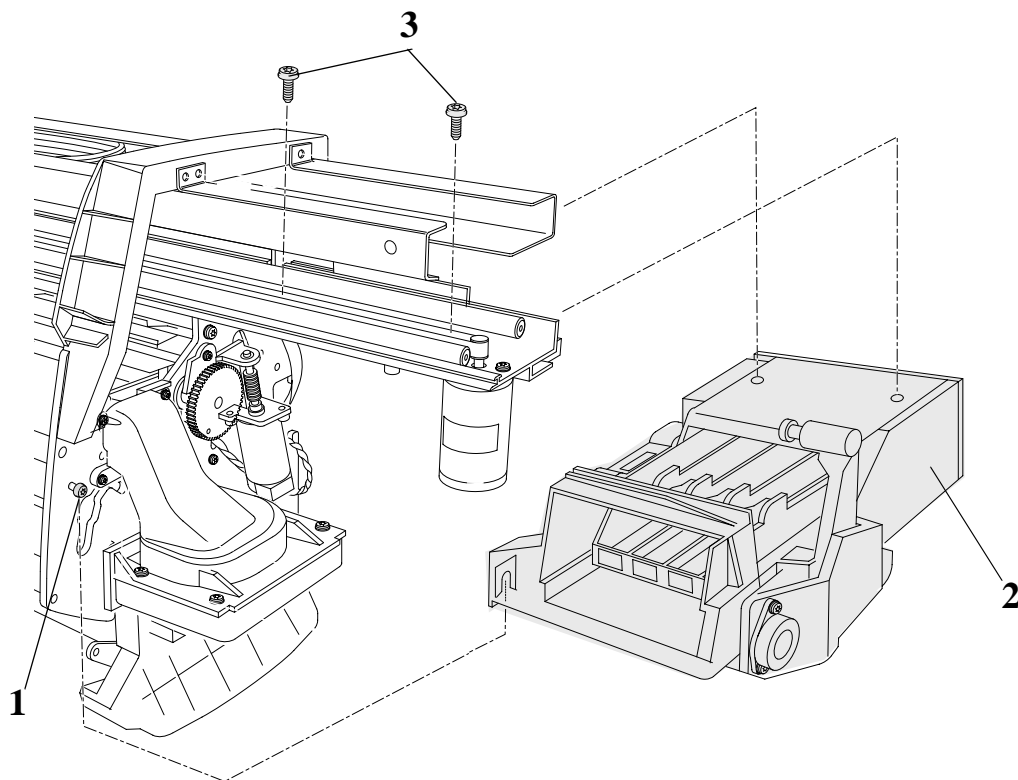


Figure 4: Service Station Assembly

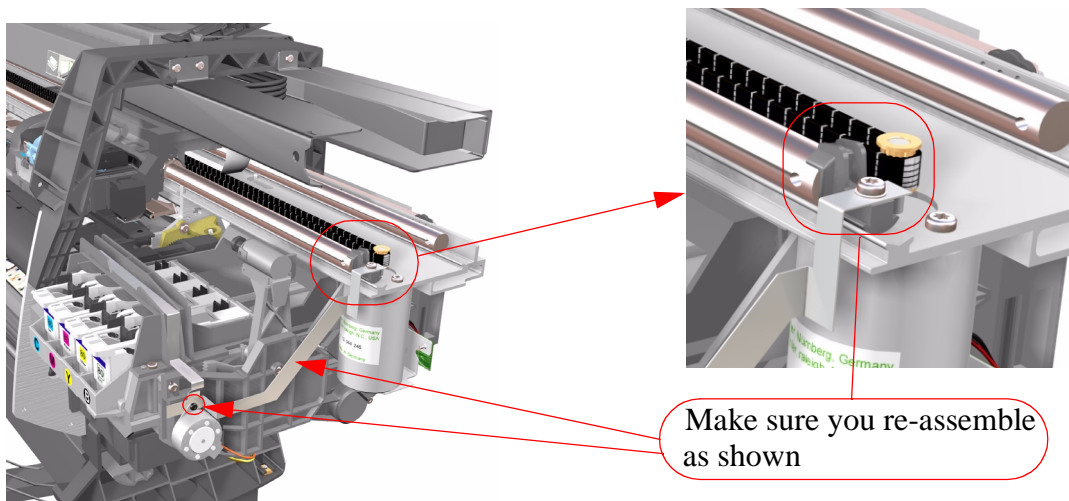
NOTE

You must perform the following Service Calibrations after the installation of the Service Station Assembly.

- Service Station ⇒ Page 5-11.
- Color to Color Calibration ⇒ Page 5-16.

NOTE

When installing the Service Station, make sure that you re-assemble the bridges (if they were installed) as shown.



Drop Detector Assembly

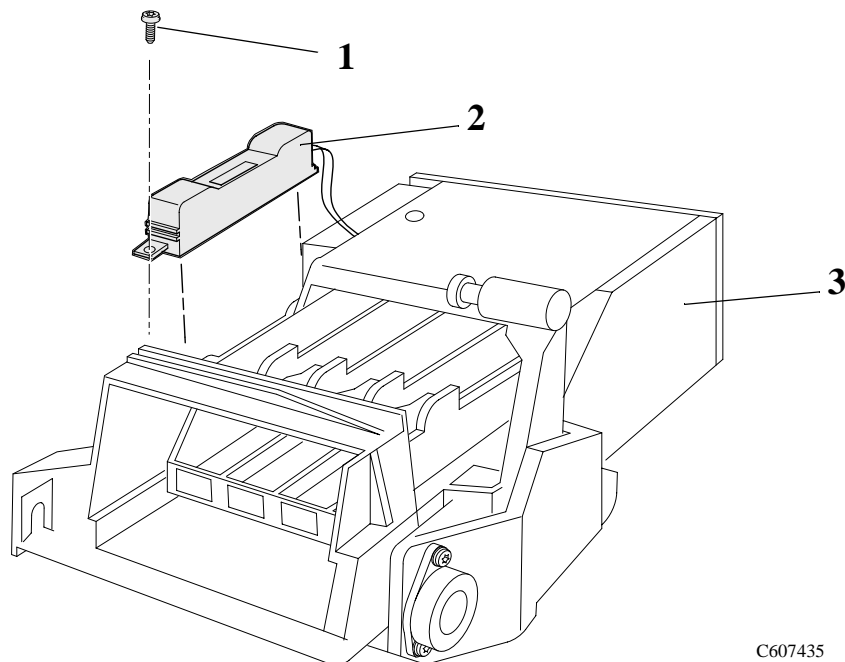
Refer to Figure 5.

Removal

WARNING

Switch off the printer and remove the power cord.

1. Remove the Printhead Cleaners (Refer to the User Guide).
2. Remove the following
 1. "Right Hand Cover" see page 8-4.
 2. "Service Station Assembly" see page 8-8.
3. Disconnect the Drop Detector cable from the Service Station Cable.
4. Remove the screw (item 1) that attaches the Drop Detector Assembly (item 2) to the Service Station (item 3).
5. Remove the Drop Detector from the Service Station.



C607435

Figure 5: Drop Detector Assembly

Vacuum Fan

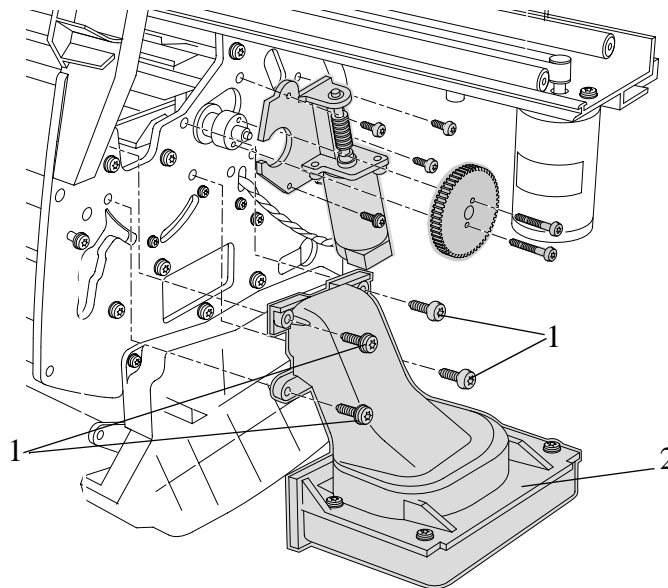
Refer to Figure 6.

Removal

WARNING

Switch off the printer and remove the power cord.

1. Remove the following:
 1. "Right Hand Cover" see page 8-4.
 2. "Service Station Assembly" see page 8-8.
2. Disconnect the vacuum fan cable from position **P7 VACUUM FAN** on the electronics module.
3. Remove the four T-15 screws (item 1) securing the vacuum fan assembly (item 2) to the right hand side chassis and remove the assembly.



C607421

Figure 6: Vacuum Fan

Paper-axis Motor Assembly

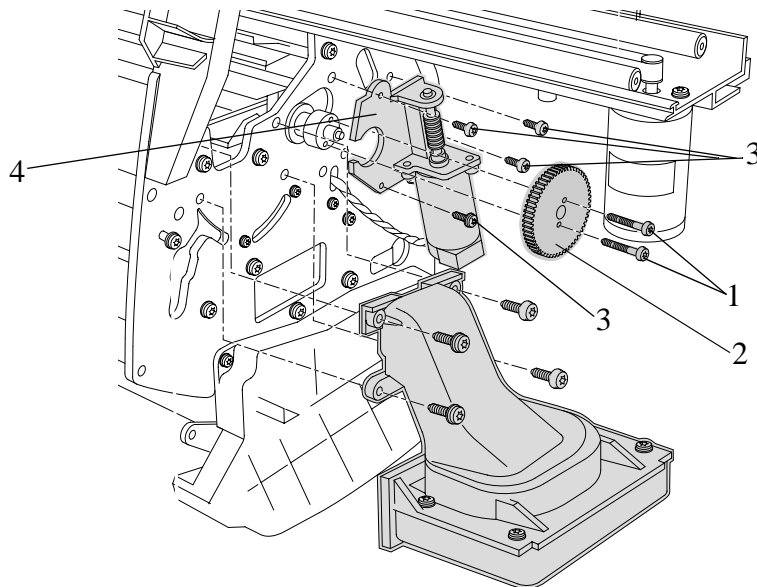
Refer to Figure 7.

Removal

WARNING

Switch off the printer and remove the power cord.

1. Remove the following:
 1. "Right Hand Cover" see page 8-4.
 2. "Service Station Assembly" see page 8-8.
2. Disconnect the Paper-axis Motor cable from position **P3 PAPER MOTOR** on the electronics module.
3. Disconnect the Paper-axis encoder cable from position **P1 PAPER ENCODER** on the electronics module.
4. Remove the two T-10 screws (item 1) securing the gear (item 2) to the right side of the roller and remove the gear.
5. Remove the four T-20 screws (item 3) securing the Paper-axis Motor Assembly (item 4) to the right hand chassis. Remove the Paper-axis Motor Assembly.



C607421

Figure 7: Paper-axis Motor Assembly

NOTE

You must perform the Accuracy Calibration (⇒ Page 5-6) after the installation of the Paper-Axis Motor Assembly.

Left Hand Cover

Refer to Figure 8 to Figure 15.

Removal

1. Remove the Ink Cartridges (Refer to the User Guide).

WARNING

Switch off the printer and remove the power cord.

NOTE

Working from the rear of the printer.

1. Open the door at the back of the left hand cover by removing the two T-15 screws (item 1) (refer to Figure 8).

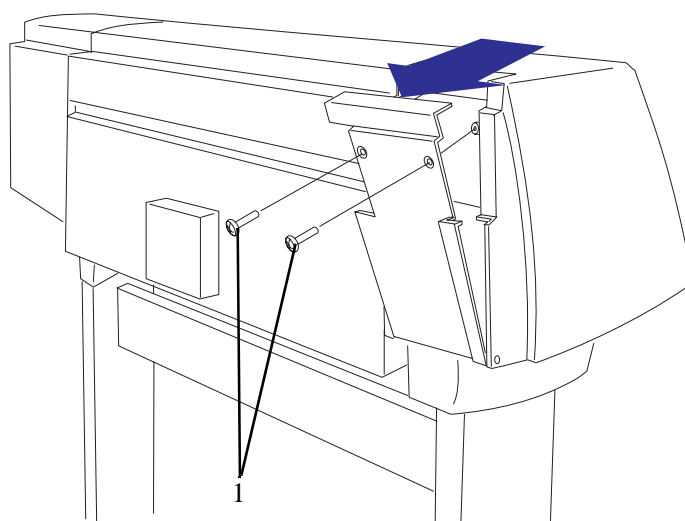


Figure 8: Left Hand Cover

2. Release the tube holder (item 1) from the rear of the left hand cover by pushing it up and out (refer to Figure 9).

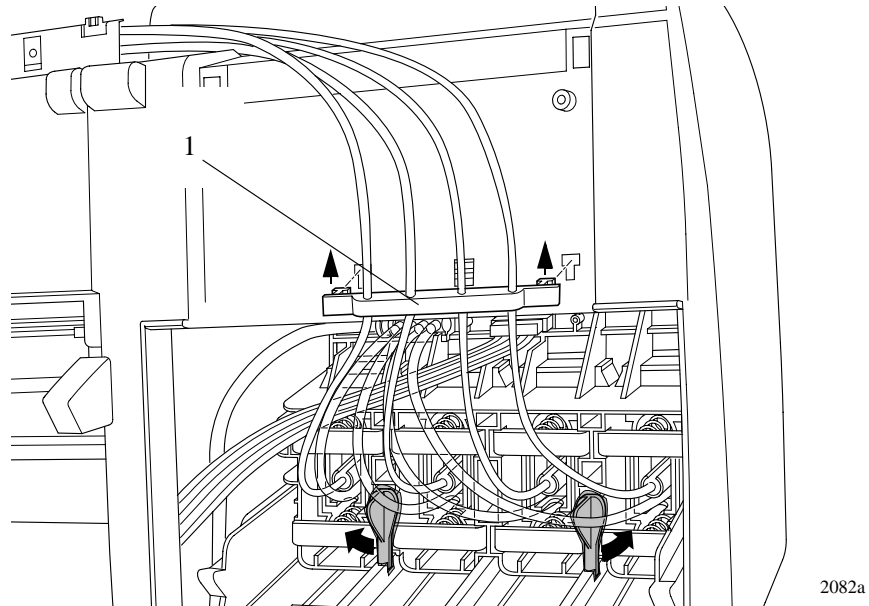


Figure 9: Tube Grip

3. Twist the two latches at the rear of the ink cartridge tube connector outwards (refer to Figure 10). This will release the complete assembly.

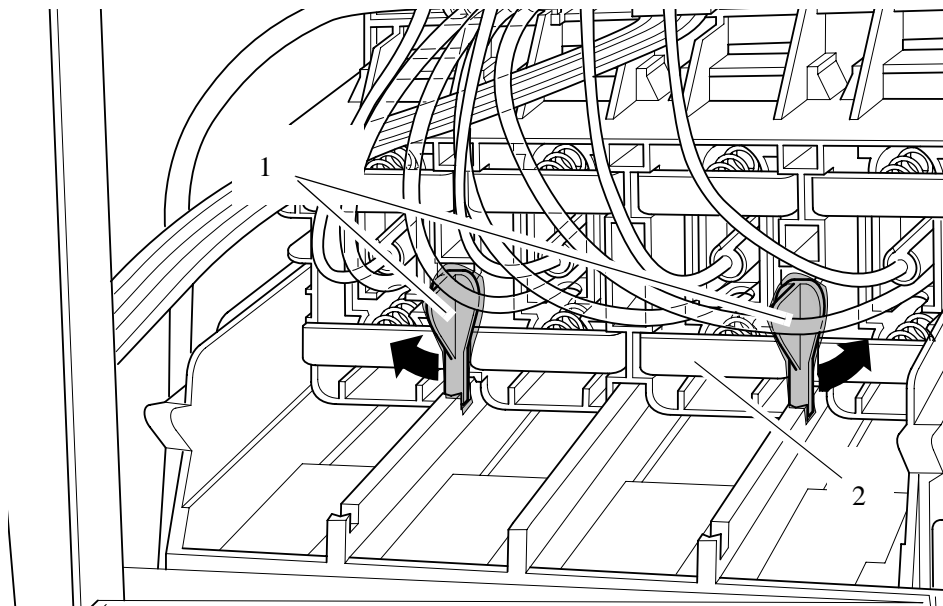


Figure 10: Latches

4. Slide the ink cartridge tube connector assembly towards you (refer to Figure 11).

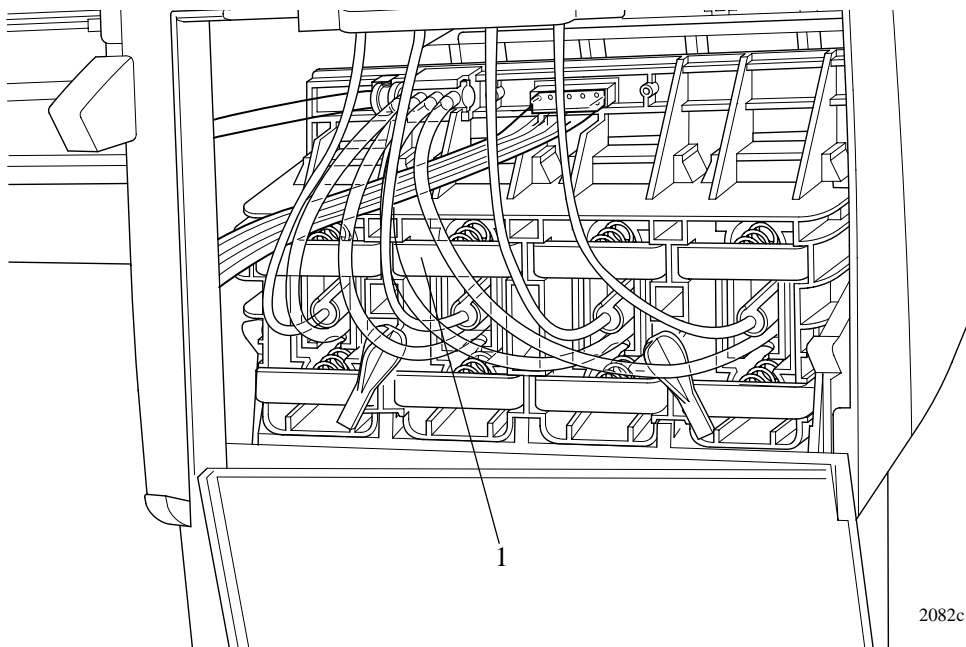


Figure 11: Ink Cartridge Tube Connector (pulled back)

5. Disconnect the ink cartridge tube connector cable (refer to Figure 12).

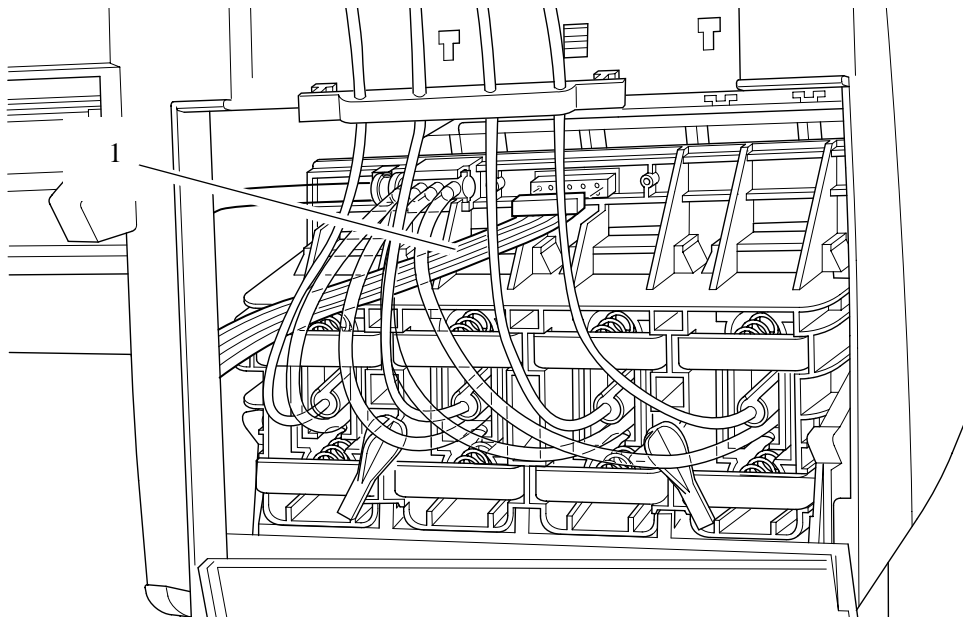


Figure 12: Ink Cartridge Tube Connector Cable

6. Disconnect the air tube (refer to Figure 13).

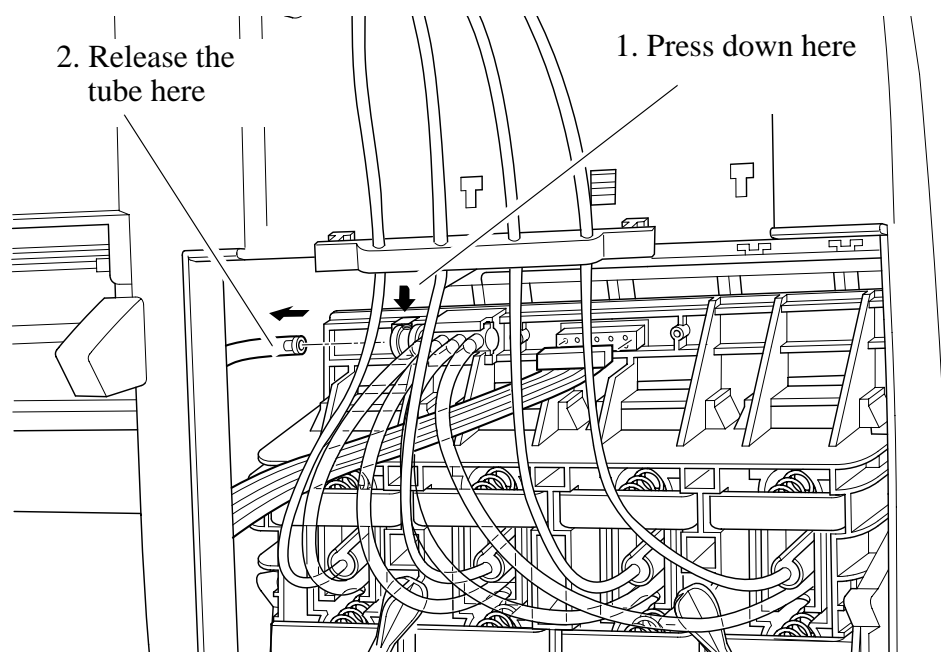
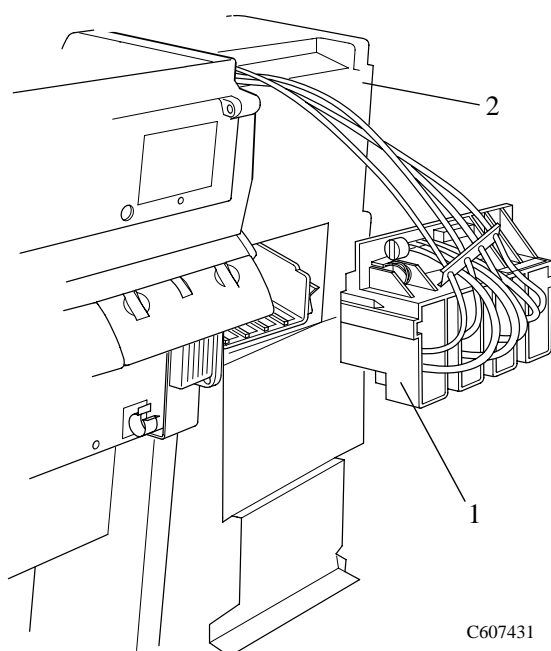


Figure 13: Air Tube

7. Remove the ink cartridge tube connector (item 1) from the rear of the left hand cover (item 2) and store it safely on top of the Printer (refer to Figure 14).



C607431

Figure 14: Ink Cartridge Tube Connector (pulled out)

NOTE

In the following steps, refer to Figure 15.

8. Remove two T-15 screws (item 1) from the left hand trim.
9. Remove two T-15 screws (item 2) from the rear of the left hand cover which are securing the cover to the left hand side chassis.

NOTE

Be careful not to drop the cover once the securing fasteners have been removed.

10. Remove the left hand cover (item 3) from the printer.

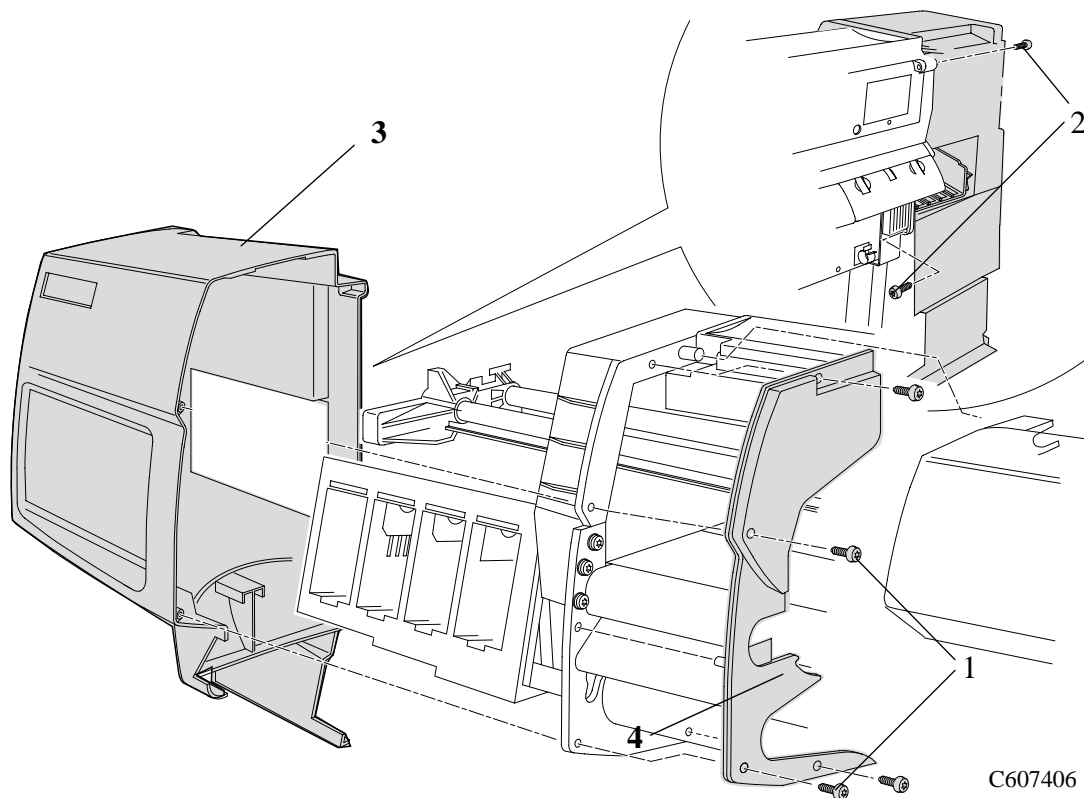


Figure 15: Left Hand Cover

Left Hand Trim Assembly

Refer to Figure 16.

Removal

1. Remove 4 screws (Item 1) that attach the Left Hand Trim (Item 2) to the Printer.
2. Remove the Left Hand Trim (Item 2) from the Printer.

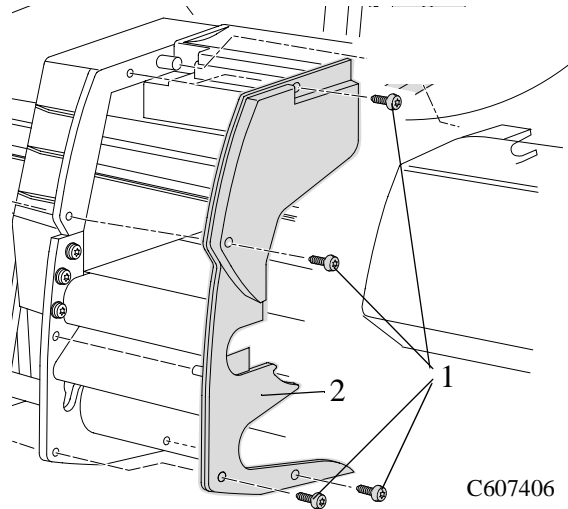


Figure 16: Left Hand Trim

Ink Supply Station Assembly (ISS)

Refer to Figure 17.

Removal

WARNING

Switch off the printer and remove the power cord.

1. Remove the Ink Cartridges (Refer to the User Guide).
2. Remove the following:
 1. "Left Hand Cover" see page 8-13.
 2. "Left Rear Cover" see page 8-24.

NOTE

Working from the rear of the printer.

3. Disconnect all the cables from the right hand side of the electronics module.

NOTE

Working from the front of the printer.

4. Unclip the latch and lift up the front of the assembly to release the front support of the ISS from a hole in the side chassis.
5. Push the ISS away from you to release the back support of the ISS from a second hole in the side chassis.
6. Move the ISS to the left to remove completely.

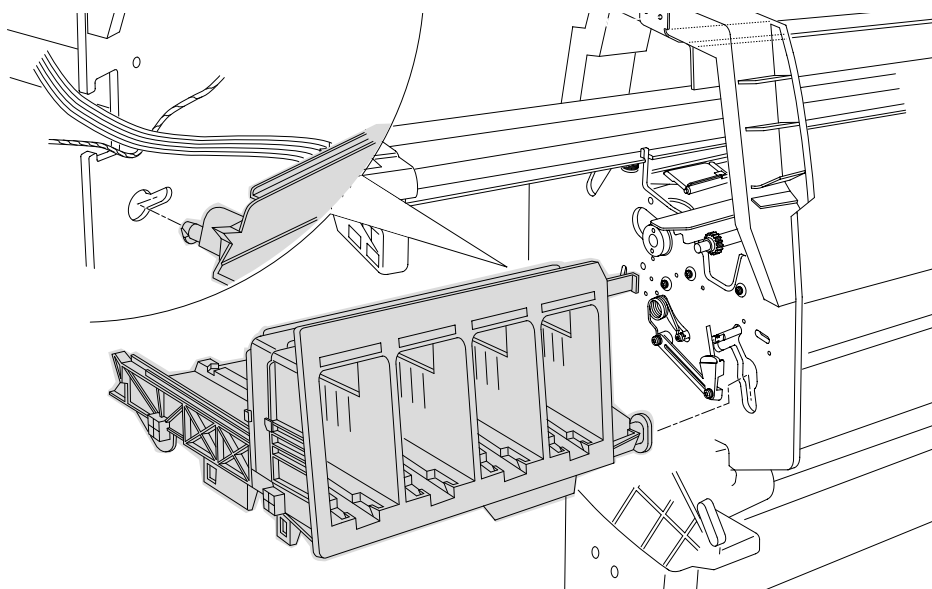


Figure 17: Ink Supply System

Air Pressurization System (APS)

Removal

WARNING

Switch off the printer and remove the power cord.

1. Remove the Ink Cartridges (Refer to the User Guide).
2. Remove the following:
 1. "Left Hand Cover" see page 8-13.
 2. "Ink Supply System" see page 8-19.

NOTE

When removing the APS from the ISS, take care with the tube and cables attached to the ISS.

3. Release the APS from the retaining clips underneath the ISS as shown in Figure 18.

NOTE

If ink in the air system is suspected (Ink Cartridge leakage or depressurization System Error), be very careful when removing the APS because there could be ink in the APS.

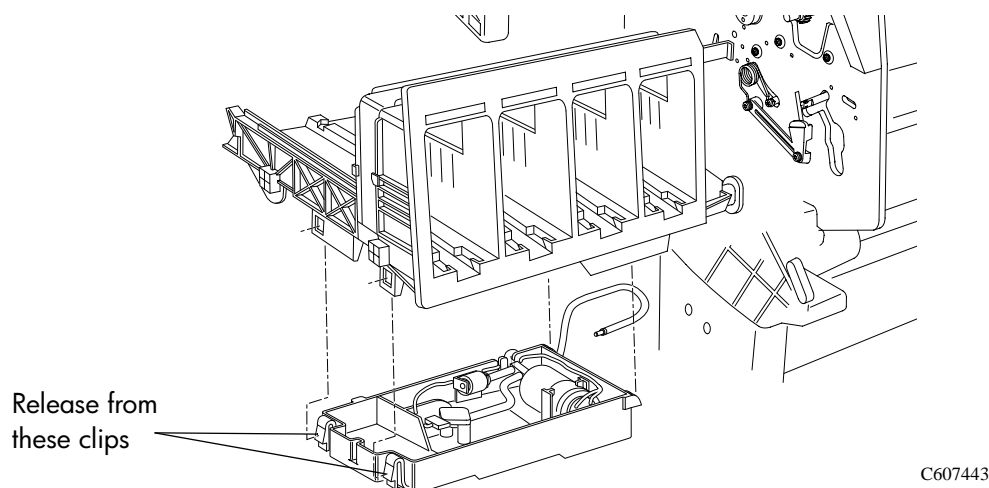


Figure 18: Air Pressurization System

Installation of the Air Pressurization System (APS)

When assembling the APS, make sure that the air tube is correctly routed and not pinched.

NOTE

Perform the Ink Pressure System Test (⇒ Page 4-14) after reinstalling the APS to make sure that it functions correctly.

Clutch Assembly and left hand miscellaneous parts

Refer to Figure 19 and Figure 20.

Removal

WARNING

Switch off the printer and remove the power cord.

1. Remove the following:
 1. "Left Hand Cover" see page 8-13.
 2. "Ink Supply System Assembly" see page 8-19.

NOTE

From steps 2 to 5, refer to Figure 19.

2. Pull apart the two tabs on the Paper Entry gear (item 1) and remove the gear.
3. Using a long screwdriver remove two T-15 screws (item 5) securing the clutch bracket (item 6) to the side chassis.
4. Remove the special T-20 screw (item 2).

NOTE

In the next step the assembly is spring loaded and when the retaining screw is removed it may help to hold the assembly with one hand to avoid losing parts.

5. Remove the gears (item 3) and the spring (item 4) in the clutch assembly. Refer to the note above.

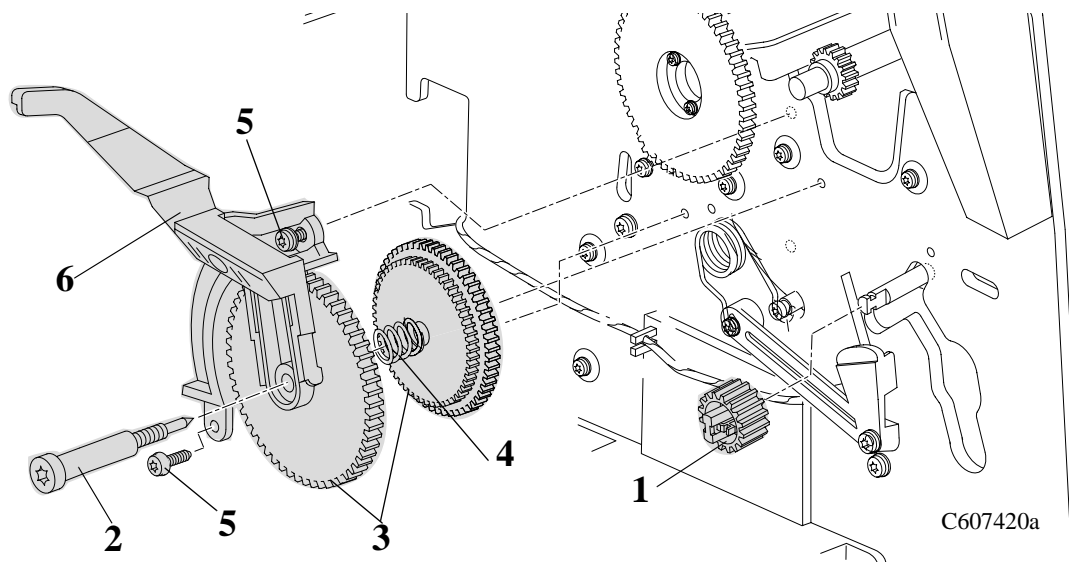


Figure 19: Clutch Assembly

NOTE

For the following steps, refer to Figure 20.

6. Remove the two T-10 screws (item 1) from the left roller gear (item 2) attached to the left side of the roller.
7. Remove the two T-20 screws (item 3) from the roller support (item 4) and remove the support.
8. Release the tension from the torsion spring (item 5) by removing the arm of the spring off the spring hook (item 6).
9. Remove the two T-15 screws (item 7) from the pinch sensor bracket (item 8) and remove the bracket with the sensor attached. Release the sensor cable from retaining clips to remove completely.
10. Remove the spring hook (T-15) (item 6).

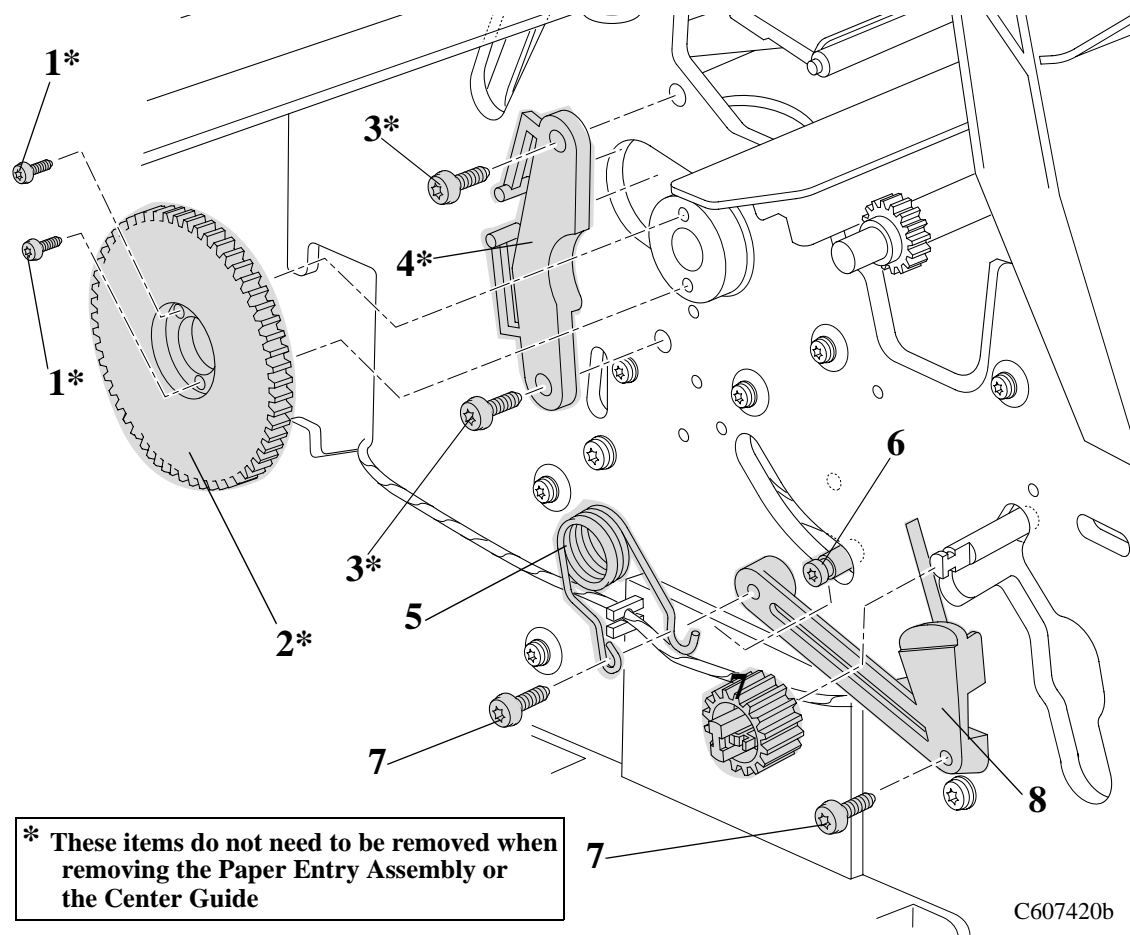


Figure 20: Miscellaneous Parts

Tail Deflectors and Rear Platen (hp designjets 1050c/1055cm Only)

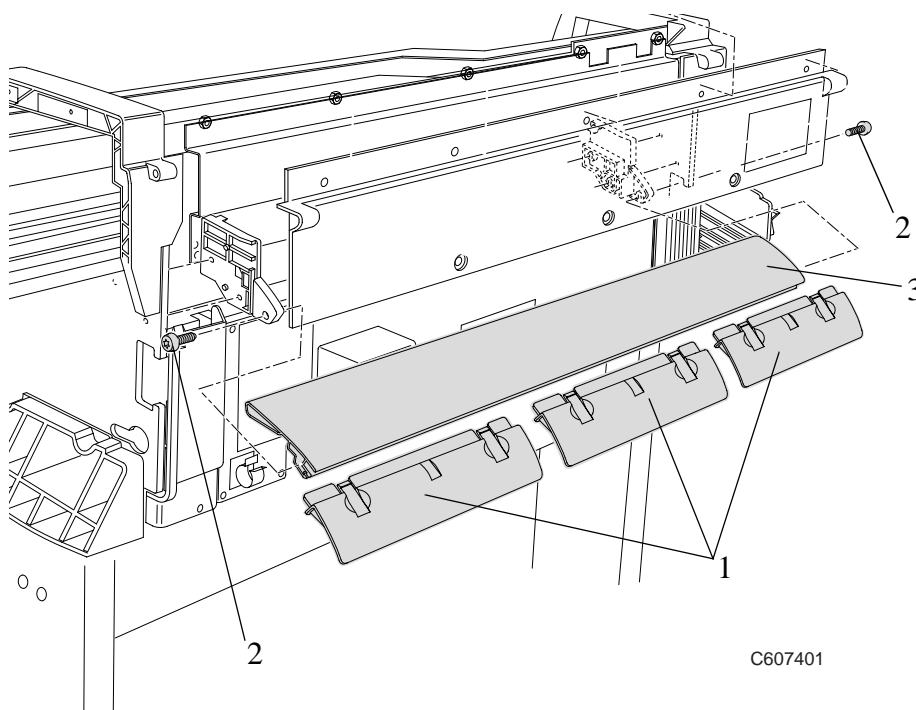
Refer to Figure 21.

Removal

WARNING

Switch off the printer and remove the power cord.

1. Remove the three Deflectors (item 1) by unclipping them from the Rear Platen (Item 3).
2. Remove two T-15 screws (item 2) on the left and right of the Rear Platen (item 3) and remove the platen.



C607401

Figure 21: Tail Deflectors and Rear Platen

Left and Right Rear Covers

Refer to Figure 22.

Removal

WARNING

Switch off the printer and remove the power cord.

NOTE

Working from the rear of the Printer.

1. Remove the T-10 Screw (Item 1) that attaches the right hand rear cover (Item 2) to the Printer.
2. Release the right hand rear cover (Item 2) from the retaining clip (item 3) that attaches the ferrite (item 4) to the rear cover.

NOTE

Some printers **DO NOT** have the retaining clip or the ferrite installed, so the above step can be ignored.

3. Remove the T-10 Screw (Item 5) that attaches the left hand rear cover (Item 6) to the Printer.
4. Release the left hand rear cover (Item 6) from the retaining clip.

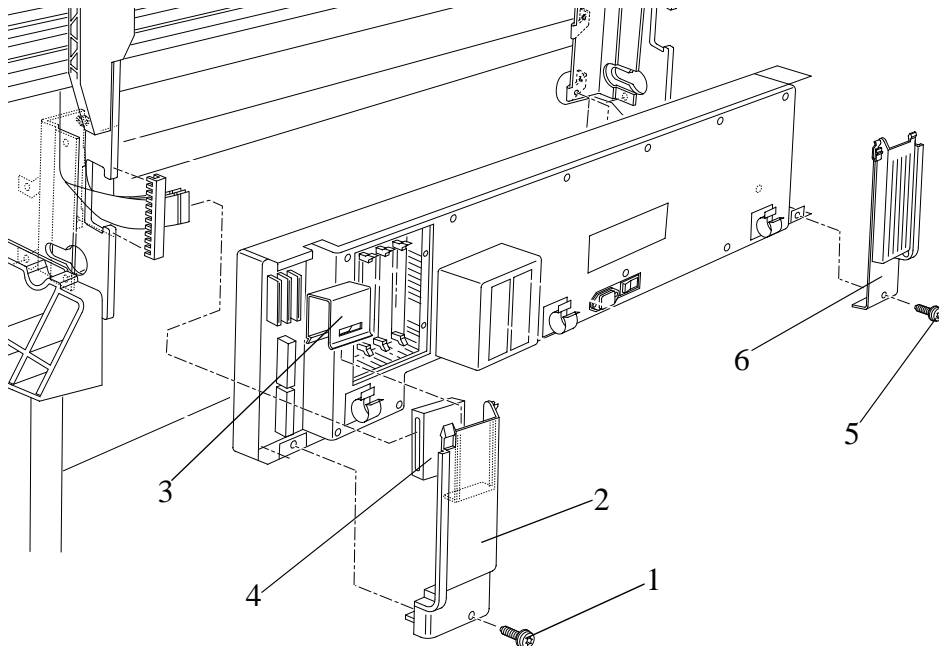


Figure 22: Left and Right Rear Covers

Electronics Module (hp designjets 1050c/1055cm Only)

Refer to Figure 23 and Figure 24.

Removal

WARNING

Switch off the printer and remove the power cord.

NOTE

Working from the rear of the Printer.

1. Remove the following:
 1. "Left and Right Hand Rear Covers" see page 8-24.
 2. "Tail Deflectors and Rear Platen" see page 8-23.

NOTE

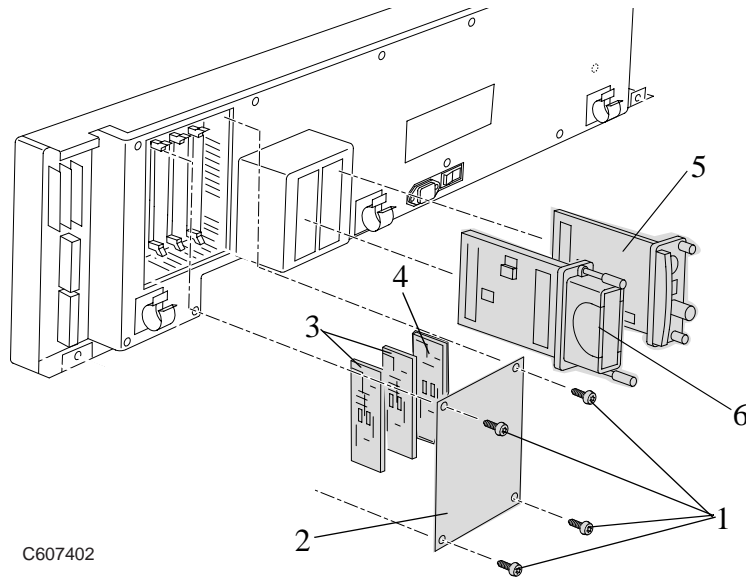
For steps 2 to 7, refer to Figure 23.

2. Locate the four T-10 screws (item 1) that secure the DIMM cover (item 2) to the Electronics Module. Remove the four screws and the DIMM cover.
Note the position of the DIMMs. From left to right:
 - The DRAM DIMM(s) are held in the 1st and 2nd slot (item 3).
 - The Firmware/Postscript Code DIMM (Flash DIMM) is held in the 3rd slot (Item 4).
3. Remove the DIMMs by releasing the retaining clips at the top and bottom of each one, holding the outer non-metallic edge and gently pulling towards you. Store these parts in a safe place.
4. With a flat end screwdriver, unscrew the two screws that attach the EIO card (item 5) to the Electronics Module. Remove the EIO card and store in a safe place.
5. With a flat end screwdriver, unscrew the two screws that attach the Hard Disk Drive (item 6) to the Electronics Module. Remove the Hard Disk Drive and store in a safe place.

WARNING

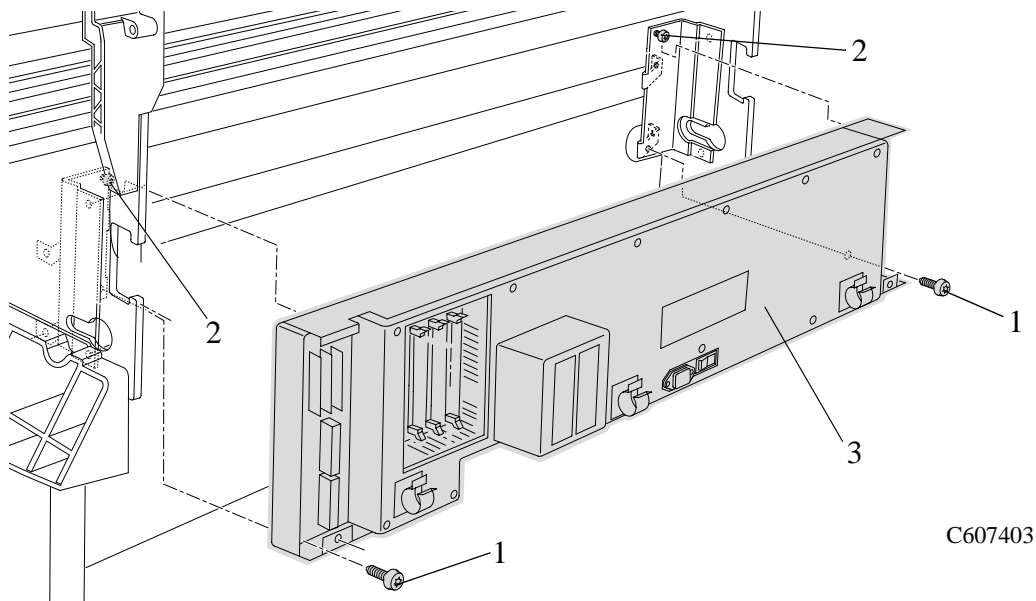
Be very careful when disconnecting the Trailing Cable from the Electronics Module. Incorrect handling will damage the Trailing Cable and then it will need replacing.

6. Disconnect the Trailing Cable by releasing it from retaining clips in the socket and carefully pulling it towards you.
7. Carefully disconnect all the cables from the left and right side of the electronics module.

**Figure 23: Electronics Module****NOTE**

For the following steps, refer to Figure 24.

8. Remove two T-20 screws (item 1) which can be found at both ends of the electronics module at the bottom.
9. Loosen (do not remove) the two remaining T-20 screws (item 2) and carefully remove the whole electronics module (item 3) by sliding it up and pulling towards you.

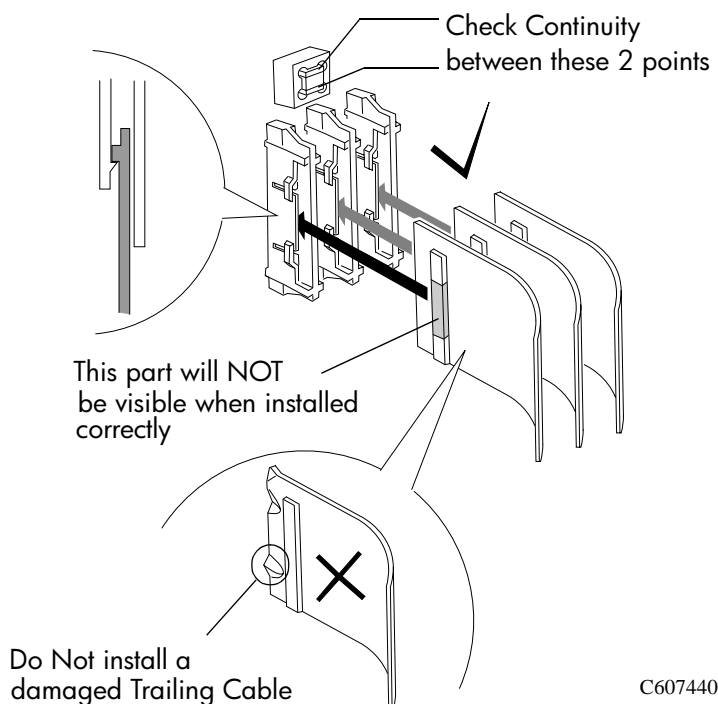
**Figure 24: Electronics Module**

Installation of the Electronics Module

WARNING

When reconnecting the Trailing Cable to the Electronics Module, make sure you connect it correctly as follows:

1. Start reconnecting the Trailing Cable from left to right (the longest strip will be connected to the 1st clip from the right).
2. Make sure you push the Trailing Cable in straight and not bent. Once the Trailing Cable is inserted, you should hear an audible click.
3. When the Trailing Cable is inserted correctly, the shaded part (as shown below) will **not** be visible.
4. Before powering ON the Printer, check the continuity (using a tester) between the two points (as shown below).
 - If there is **continuity** between the two points, then the Trailing Cable is installed **incorrectly**. Do **NOT** power ON the Printer because you will burn an internal Electronics Module fuse. Disconnect the Trailing Cable and reconnect again using the above steps.
 - If there is **no continuity** between the two points, then it is possible to power ON the Printer without burning the internal Electronics Module fuse, but there is a possibility that you may still get the System Error Code OB0006, in which case you have to reconnect the Trailing Cable using the above steps.



C607440

NOTE

You must perform the following Service Calibration and Utility after the installation of the Electronics Module.

- Set Asian PS Fonts (only in Asia) ⇒ Page 4-33.
- Calibrations Backup ⇒ Page 5-19 & Pen Alignment ⇒ Page 5-22.

Electrocover (hp designjets 1050c plus/1055cm plus Only)

Refer to Figure 25 and Figure 26.

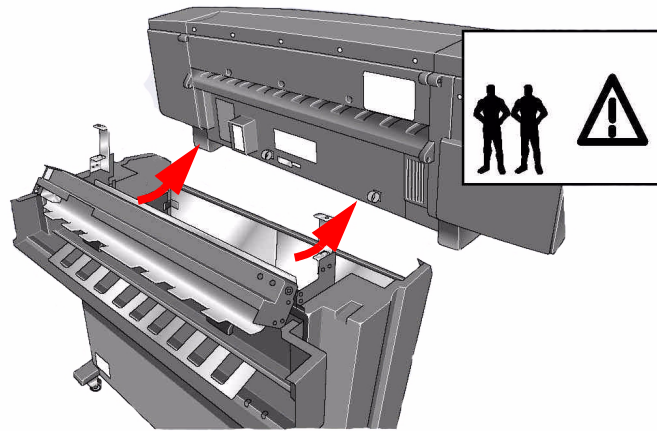
Removal

WARNING

Switch off the printer and remove the power cord.

NOTE

If a multi-roll feeder is installed, you must remove the printer from it **BEFORE** you can remove the Electrocover.



NOTE

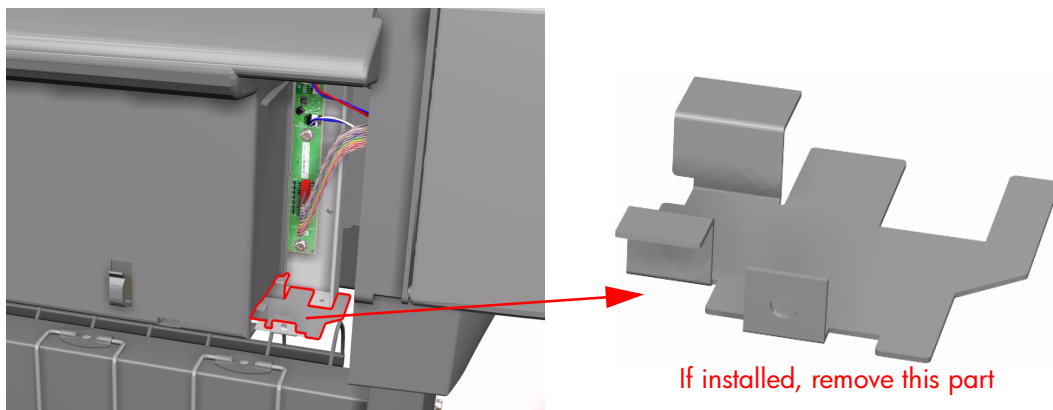
Working from the rear of the Printer.

1. Remove the following:
 1. "Left and Right Hand Rear Covers" see page 8-24.

NOTE

For steps 2 to 4, refer to Figure 25.

2. If there is a sheet metal support installed on the right hand side (looking from the rear) of the Printer, make sure that you remove it. This part is **NOT** installed on **ALL** printers, so if it is not installed, don't worry about it.



3. Unclip the DIMM cover (item 1) from the back of the Printer.
Note the position of the DIMMs. From left to right:
 - The Firmware/Postscript Code DIMM (Flash DIMM) is held in the 1st slot (Item 2).
 - The DRAM DIMM(s) are held in the 2nd and 3rd slot (item 3).
4. Remove the DIMMs by releasing the retaining clips at the top and bottom of each one, holding the outer non-metallic edge and gently pulling towards you. Store these parts in a safe place.
5. With a flat end screwdriver, unscrew the two screws that attach the EIO card (item 4) to the Electronics Module. Remove the EIO card and store in a safe place.

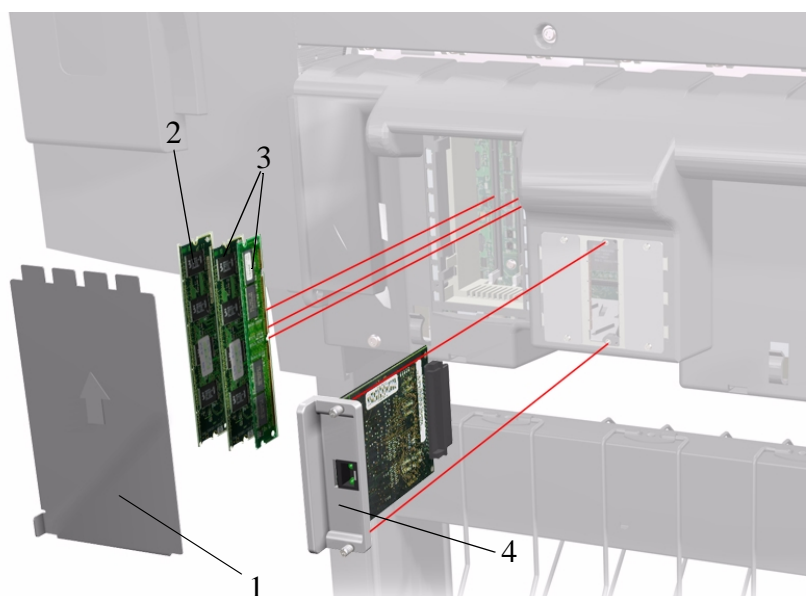
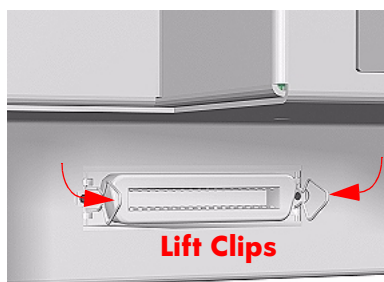


Figure 25: DIMM's and EIO Card

6. Make sure that the parallel port connector clips are in the UP position so that they pass through the slot in the Electrocover.



7. Unclip and remove the Electrocover from the back of the Printer as follows (refer to Figure 26):
 - a Start from the right hand side (working from the rear) and disengage the clips from underneath the Electrocover by pulling with your fingers and rotating slightly (shown as **arrow a** on Figure 26).
 - b Disengage the central right clip (shown as **arrow b** on Figure 26).
 - c Disengage the central left clip (shown as **arrow c** on Figure 26).
 - d Disengage the clip on the extreme left of the Electrocover (note that the Electrocover will still be held by hooks from the top of the cove (shown as **arrow d** on Figure 26).
 - e Rotate the complete Electrocover upwards (shown as **arrow e** on Figure 26).
 - f Disengage the top hooks (which are hidden) by pushing from underneath (shown as **arrow f** on Figure 26).
 - g Once the hooks are released, pull the Electrocover gently and out of the Printer, taking extreme care not to damage any internal electrical parts (shown as **arrow g** on Figure 26).



Figure 26: Electrocover

WARNING



Once the Electrocover is removed, you **MUST** place the PSU Protector (a black cover with the words "Attention High Voltage") over the Power Supply Unit. Serious shock leading to death or injury may result if you do not follow this precaution.

Main PCA (hp designjets 1050c plus/1055cm plus Only)

Refer to Figure 27.

Removal

WARNING

Switch off the printer and remove the power cord.

NOTE

Working from the rear of the Printer.

1. Remove the following:
 1. "Left and Right Hand Rear Covers" see page 8-24.
 2. "Electrocover" see page 8-28.

WARNING

Be very careful when disconnecting the Trailing Cable from the Main PCA. Incorrect handling will damage the Trailing Cable and then it will need replacing.

2. Disconnect the Trailing Cable from the Main PCA by releasing it from retaining clips in the socket and carefully pulling it towards you.
3. Carefully disconnect all the cables connected to the Main PCA (including the cables between the HDD and the HDD Bridge).

NOTE

For the following steps, refer to Figure 27.

4. Remove 10 T-10 screws (item 1) that secure the Main PCA (item 2) to the Electronics Module base.
5. Remove the Main PCA (item 2) from the Printer and disconnect the HDD Bridge from the Main PCA.

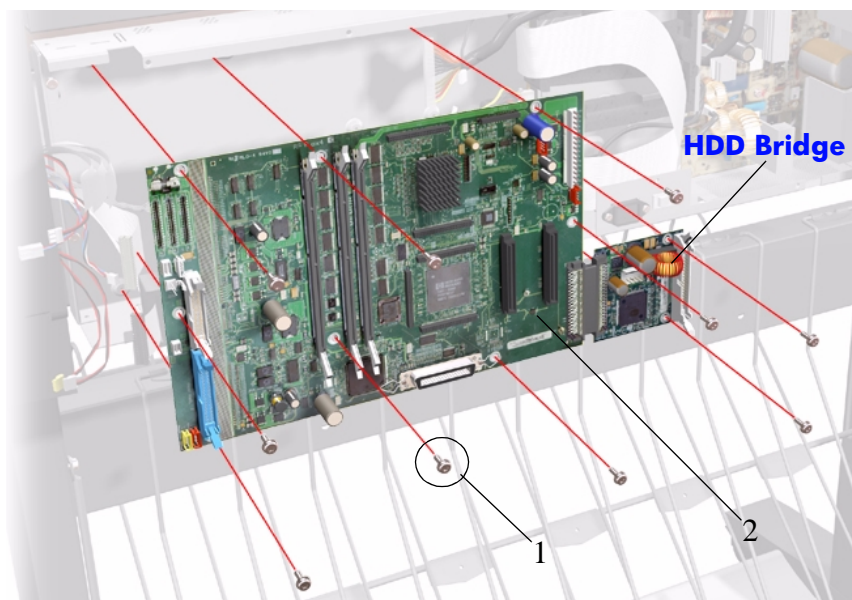


Figure 27: Main PCA

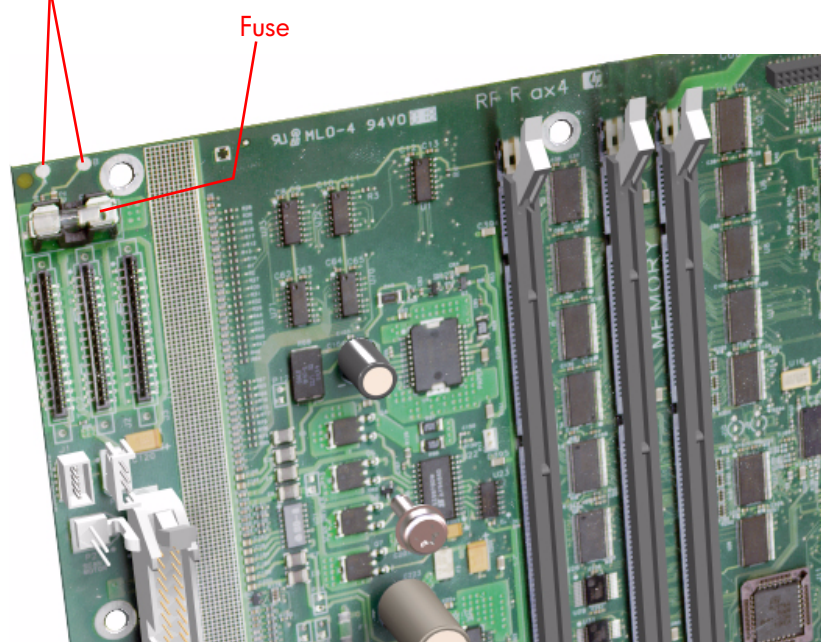
Installation of the Main PCA

WARNING

When reconnecting the Trailing Cable to the Main PCA, make sure you connect it correctly as follows:

1. Start reconnecting the Trailing Cable from left to right (the longest strip will be connected to the 1st clip from the right).
2. Make sure you push the Trailing Cable in straight and not bent. Once the Trailing Cable is inserted, you should hear an audible click.
3. When the Trailing Cable is inserted correctly, the shaded part will **not** be visible.
4. **Before** powering ON the Printer, check the resistance (using a tester) between the two points (as shown below).
 - If the resistance between the 2 points is **less** than 100 ohms, then the Trailing Cable is installed **incorrectly**. Do **NOT** power ON the Printer because you will burn the internal Main PCA fuse. Disconnect the Trailing Cable and reconnect again using the above steps.
 - If the resistance between the 2 points is **more** than 100 ohms, then it is possible to power ON the Printer without burning the internal Main PCA fuse.

check resistance between
these two points



WARNING

You must perform the following Service Calibration and Utility after the installation of the Main PCA.

- Set Asian PS Fonts (only in Asia) ⇒ Page 4-32.
- **Calibrations Backup** ⇒ Page 5-19.
- Pen Alignment ⇒ Page 5-22.

Power Supply Unit (hp designjets 1050c plus/1055cm plus Only)

Refer to Figure 28.

Removal

WARNING

Switch off the printer and remove the power cord.

NOTE

Working from the rear of the Printer.

1. Remove the following:
 1. "Left and Right Hand Rear Covers" see page 8-24.
 2. "Electrocover" see page 8-28.
2. Carefully disconnect all the cables connected from the Power Supply Unit to the Main PCA.

NOTE

For the following steps, refer to Figure 28.

3. Remove 6 T-10 screws (item 1) that secure the Power Supply Unit (item 2) to the Electronics Module base.
4. Remove the Power Supply Unit (item 2) from the Printer.

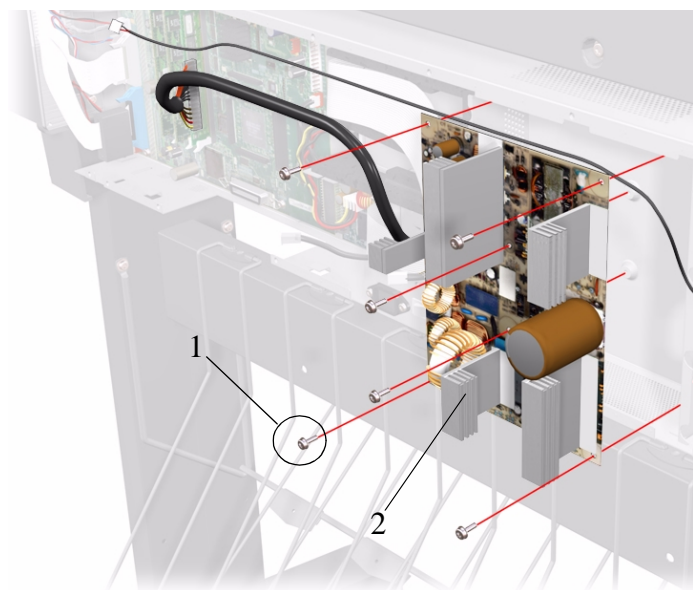


Figure 28: Power Supply unit

ISS PCA (hp designjets 1050c plus/1055cm plus Only)

Refer to Figure 29.

Removal

WARNING

Switch off the printer and remove the power cord.

NOTE

Working from the rear of the Printer.

1. Remove the following:
 1. "Left and Right Hand Rear Covers" see page 8-24.
 2. "Electrocover" see page 8-28.
2. Carefully disconnect all the cables connected to the ISS PCA.

NOTE

For the following steps, refer to Figure 29.

3. Remove 5 T-10 screws (item 1) that secure the ISS PCA (item 2) to the Electronics Module base.
4. Remove the ISS PCA (item 2) from the Printer.

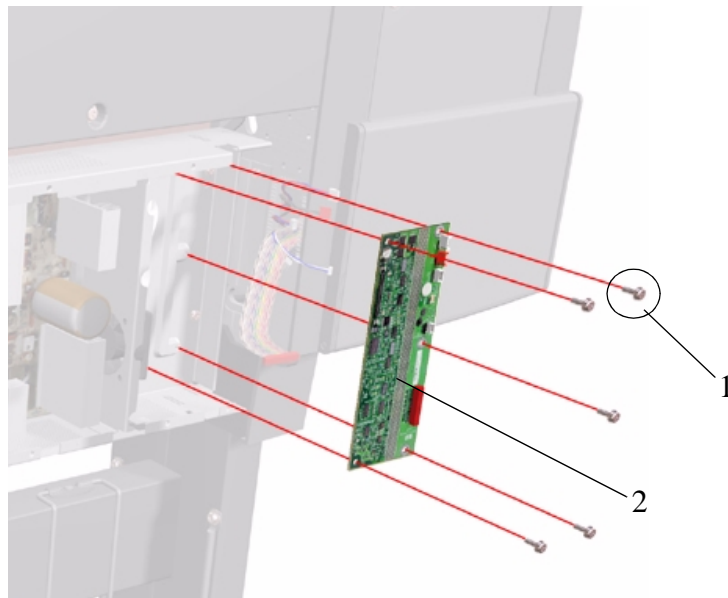


Figure 29: ISS PCA

Hard Disk Drive (hp designjets 1050c plus/1055cm plus Only)

Refer to Figure 30.

Removal

WARNING

Switch off the printer and remove the power cord.

NOTE

Working from the rear of the Printer.

1. Remove the following:
 1. "Left and Right Hand Rear Covers" see page 8-24.
 2. "Electrocover" see page 8-28.

NOTE

For the following steps, refer to Figure 30.

2. Disconnect the HDD Cables from the Hard Disk Drive.
3. Remove the Hard Disk Drive (item 1) from the Printer.

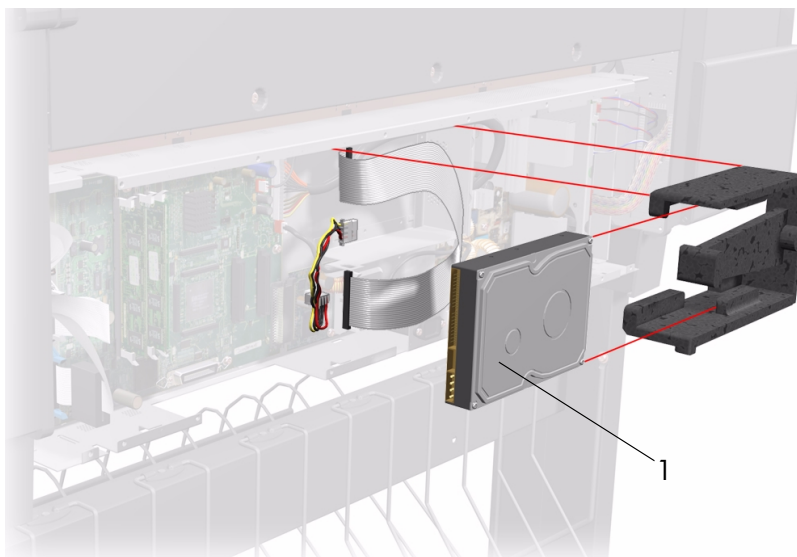


Figure 30: Hard Disk Drive

Electronics Module Base (hp designjets 1050c plus/1055cm plus Only)

Removal

WARNING

Switch off the printer and remove the power cord.

NOTE

Working from the rear of the Printer.

1. Remove the following:
 1. "Left and Right Hand Rear Covers" see page 8-24.
 2. "Electrocover" see page 8-28.
 3. "Main PCA" see page 8-31.
 4. "Power Supply Unit" see page 8-33.
 5. "ISS PCA" see page 8-34.
 6. "Hard Disk Drive" see page 8-35.

NOTE

For steps 2 and 3, refer to Figure 31.

2. Remove 2 T-10 screws (item 1) that secure the Electronics Module Base (item 2) to the Printer.
3. Remove the Electronics Module Base (item 2) from the Printer.

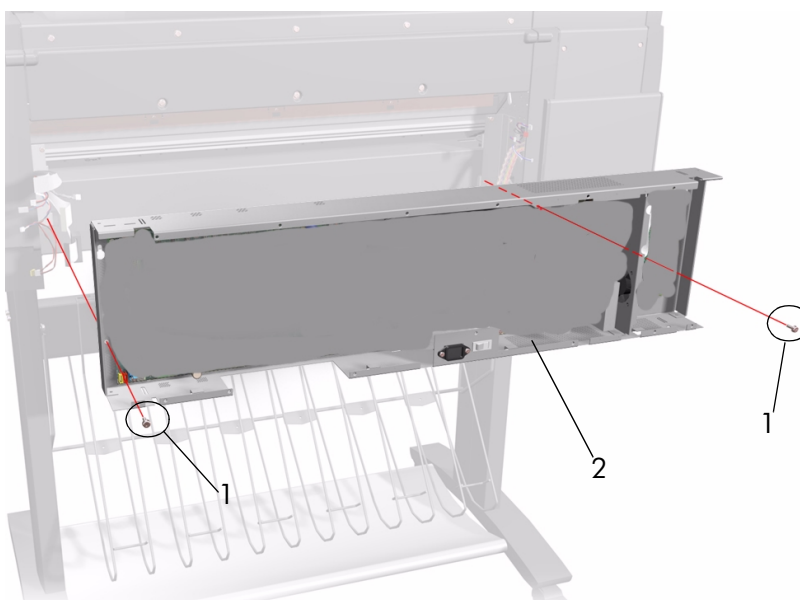


Figure 31: Electronics Module Base

Media Sensor

Removal

WARNING

Switch off the printer and remove the power cord.

1. Remove the following:
 1. "Center Guide" see page 8-79.
2. Carefully remove the media sensor (item 2) from underneath the center guide (item 1) (refer to Figure 32).

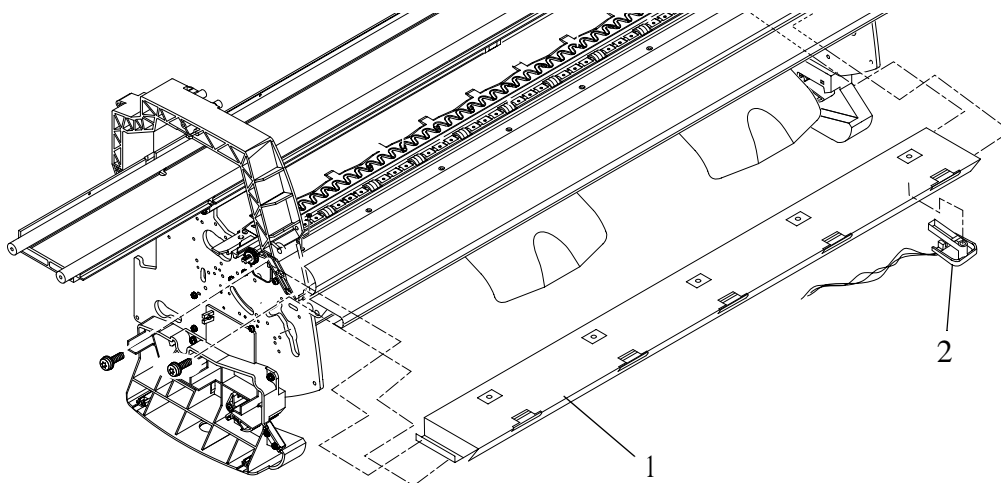


Figure 32: Media Sensor

NOTE

You may also be able to remove the Media Sensor as follows:

1. Remove the following:
 1. "Electronics Module" see page 8-25.
2. Reach underneath the Center Guide and carefully remove the media sensor by pulling it gently down.

Window

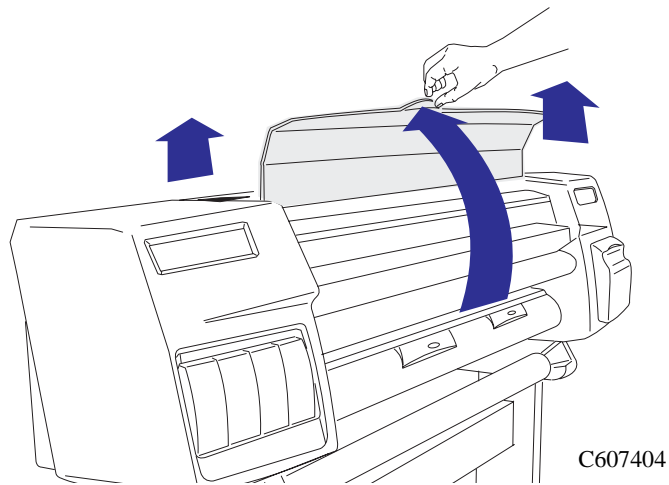
Refer to Figure 33.

Removal

WARNING Switch off the printer and remove the power cord.

1. Open the window and holding both sides pull up to remove.

NOTE The Window hinges must be vertical when pulling up.



C607404

Figure 33: Window

Top Cover

Refer to Figure 34.

Removal

WARNING

Switch off the printer and remove the power cord.

1. Remove one T-15 screw (item 1) from the front of the top cover (item 2).
2. Remove five T-15 screws (item 3) from the rear of the top cover.
3. The top cover (Item 2) can now be released from retaining clips and then removed.

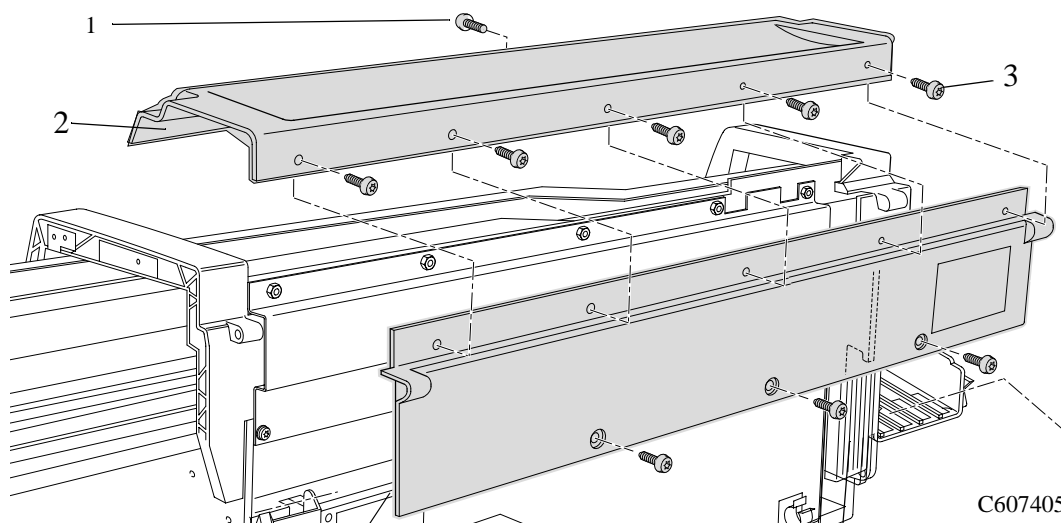


Figure 34: Top Cover

Back Cover

Refer to Figure 35.

Removal

WARNING

Switch off the printer and remove the power cord.

1. Remove the following:
 1. "Top Cover" see page 8-39.
2. Remove three T-15 screws (item 1) from the bottom of the back cover (item 2). Lift the back cover up and remove.

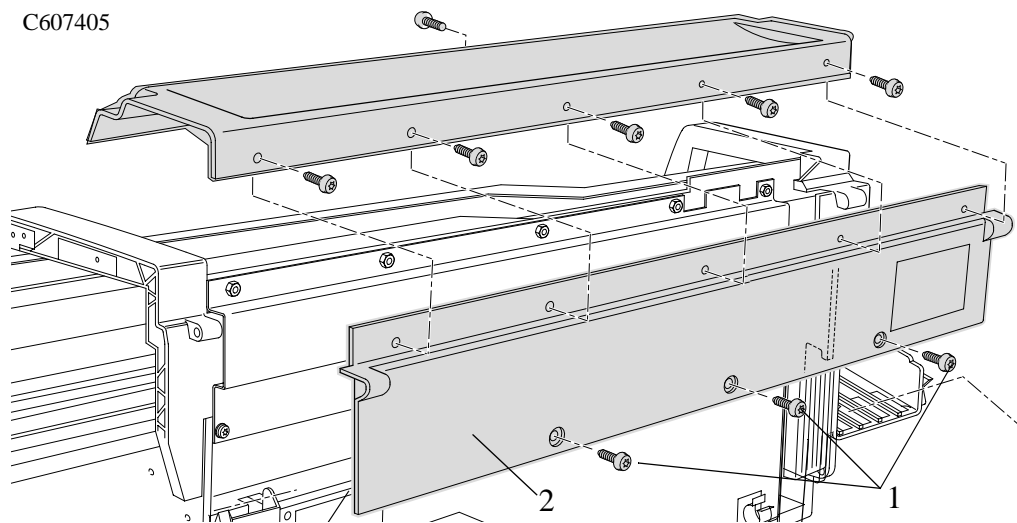


Figure 35: Back Cover

Scan-axis Motor Assembly

Refer to Figure 36.

Removal

WARNING

Switch off the printer and remove the power cord.

1. Remove the following:
 1. "Right Hand Cover" see page 8-4.
 2. "Left Rear Cover" see page 8-24.
2. Disconnect the scan motor cable from position **P3 SCAN MOTOR** in the electronics module.
3. Remove the two T-15 screws (item 1) that attach the Scan-axis motor (item 2) to the Chassis.
4. Hold the Scan-axis motor at an angle, just enough so that the belt (item 3) can be taken off.
5. Remove the Scan-axis Motor from the printer.

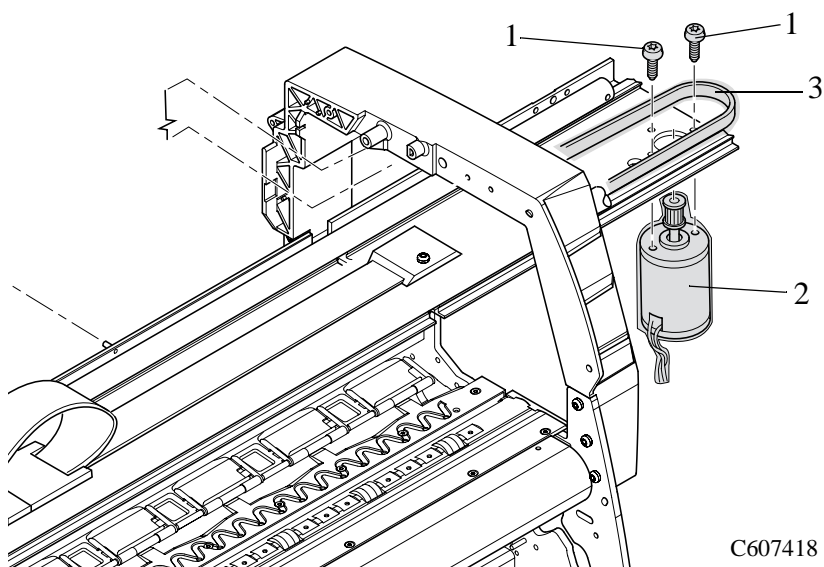


Figure 36: Scan-axis Motor Assembly

Encoder Strip

Refer to Figure 37 to Figure 39.

Removal

WARNING

Switch off the printer and remove the power cord.

1. Remove the following
 1. "Left Hand Cover" see page 8-13.
 2. "Right Hand Cover" see page 8-4.
 3. "Back Cover" see page 8-40.

CAUTION

To prevent damage to the encoder strip, hold it at the ends only.

NOTE

Working from the rear of the printer.

NOTE

For steps 2 and 3, refer to Figure 37.

2. Remove five 7mm nuts (item 1) from the EMC Cover (item 2).
3. Remove two T-15 screws (item 3) from the EMC Cover and remove the plate.

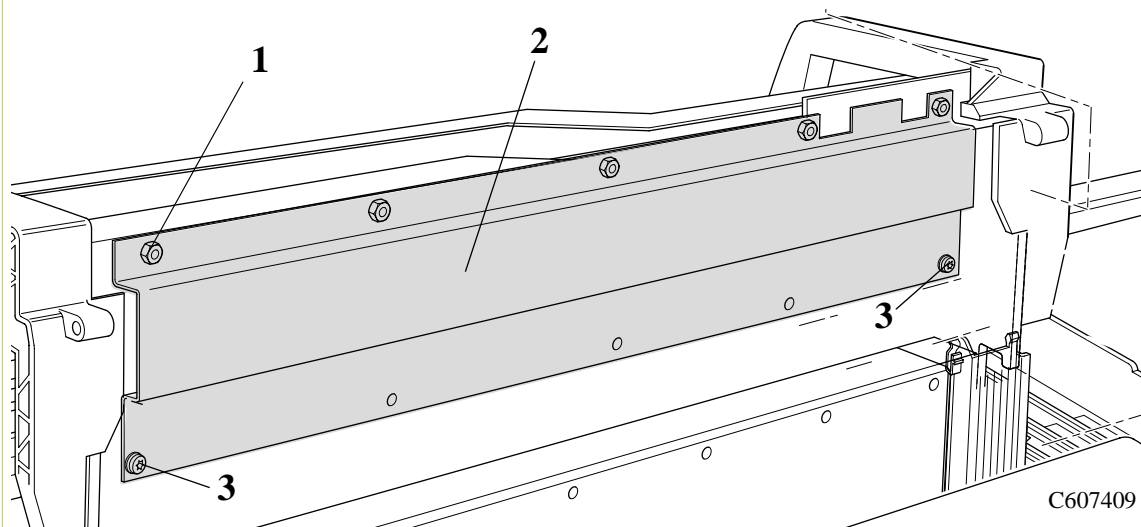


Figure 37: Encoder Strip

NOTE

For steps 4 and 5, refer to Figure 38.

4. Remove the 5.5mm nut (item 1) from the left side of the Printer that attaches the Encoder Strip (item 3) to Spring Clip (item 2).

NOTE

To perform the next step use a screw driver to press the spring clip (item 2) in towards the middle of the printer.

5. Release the Encoder Strip (item 3) from the retaining pin (item 4) on the Spring Clip (item 2).

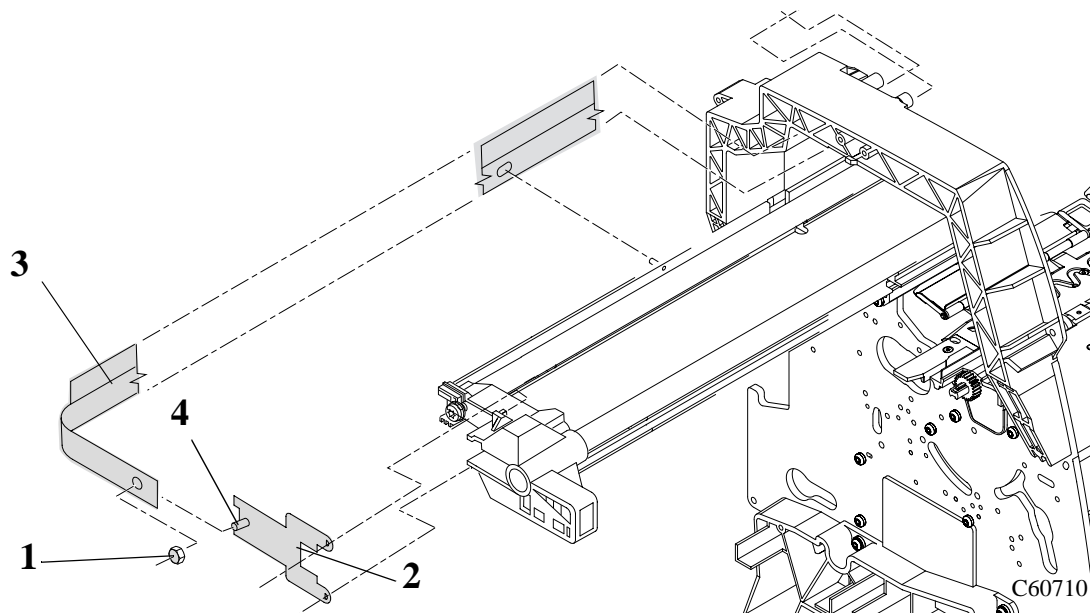


Figure 38: Encoder Strip

NOTE

For the following steps, refer to Figure 39.

6. Remove the 5.5mm nut (item 1) from the right side of the printer securing the encoder strip (item 2).
7. Remove the encoder strip from retaining pins (item 3) on the right side of the Printer Chassis.
8. Remove the encoder strip spacer (item 4).
9. Release the encoder strip from the carriage assembly.
10. Release the encoder strip from all the retaining pins (item 5) along the back of the printer.
11. The encoder strip can now be removed from the printer.

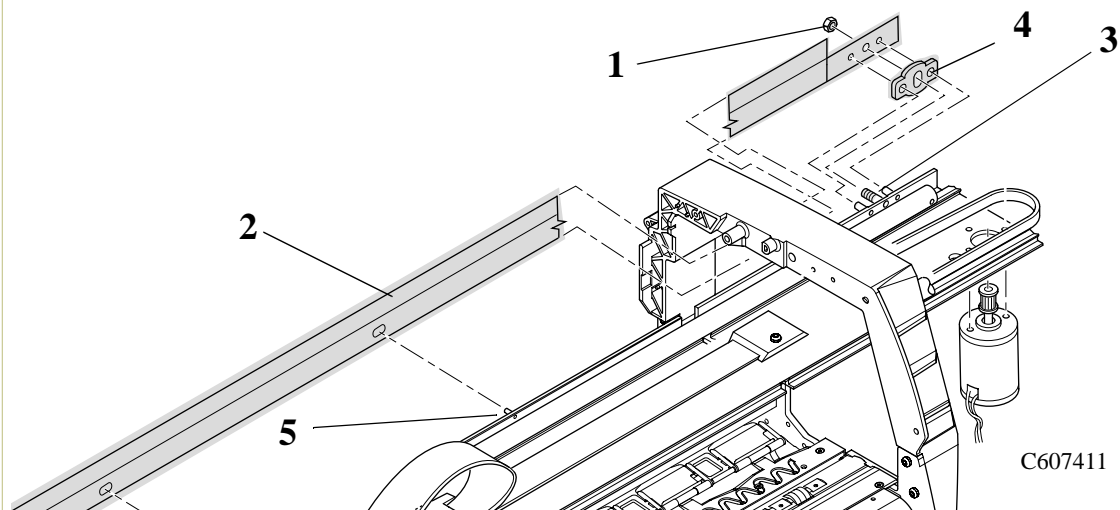


Figure 39: Encoder Strip

Tensioner

Refer to Figure 40 to Figure 42.

Removal

WARNING

Switch off the printer and remove the power cord.

1. Remove the following
 1. "Left Hand Cover" see page 8-13.
2. To release the tension on the belt (item 1) from the left hand side of the Printer, squeeze the spring (item 2) using the tensioner wedge clip (item 3) until you hear it click into place (refer to Figure 40).

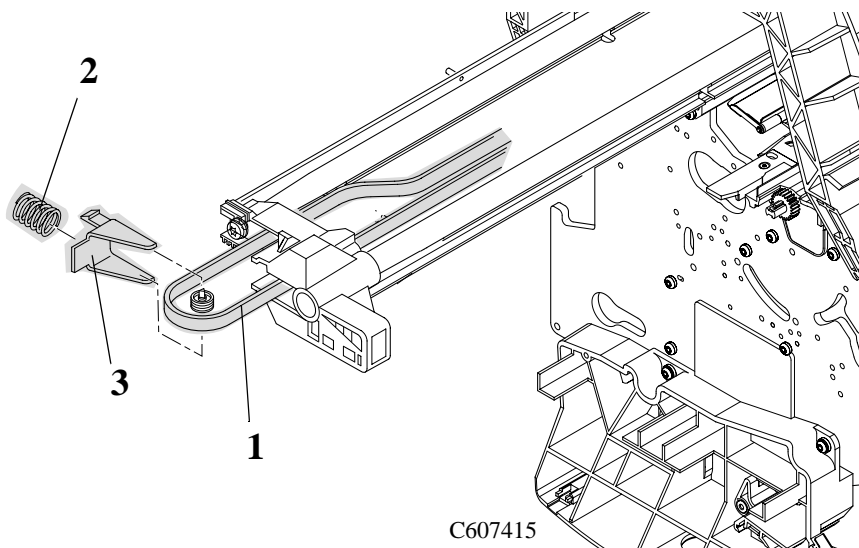


Figure 40: Tensioner Assembly

3. Remove the belt (item 1) from the belt motor pulley (item 2) on the right hand side of the Printer (refer to Figure 41)

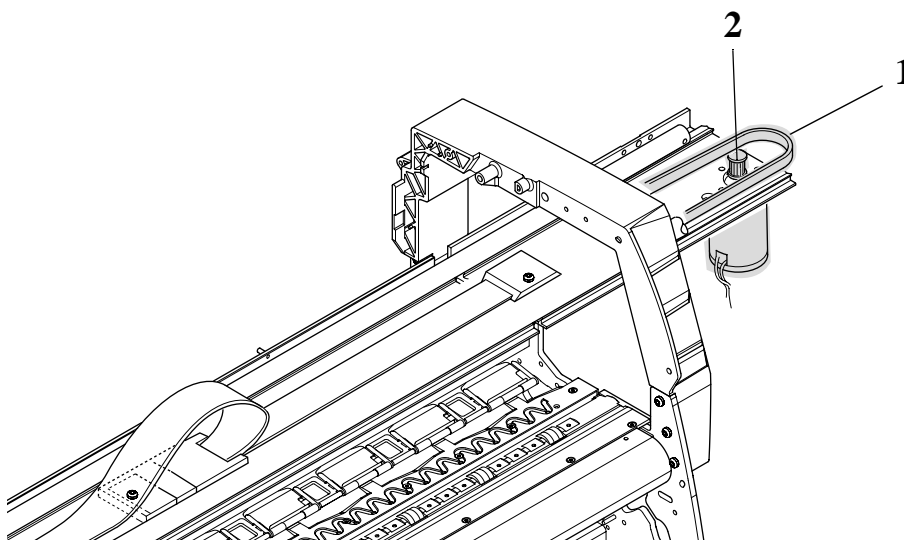


Figure 41: Tensioner Assembly

NOTE

For steps 4 to 6, refer to Figure 42.

4. Remove the tensioner pulley (item 1) from the belt (item 2) which is located in the tensioner assembly (item 3).
5. Remove the two T-15 screws (item 4) securing the tensioner assembly to the slider rods (item 5).
6. Remove the tensioner assembly (item 3).

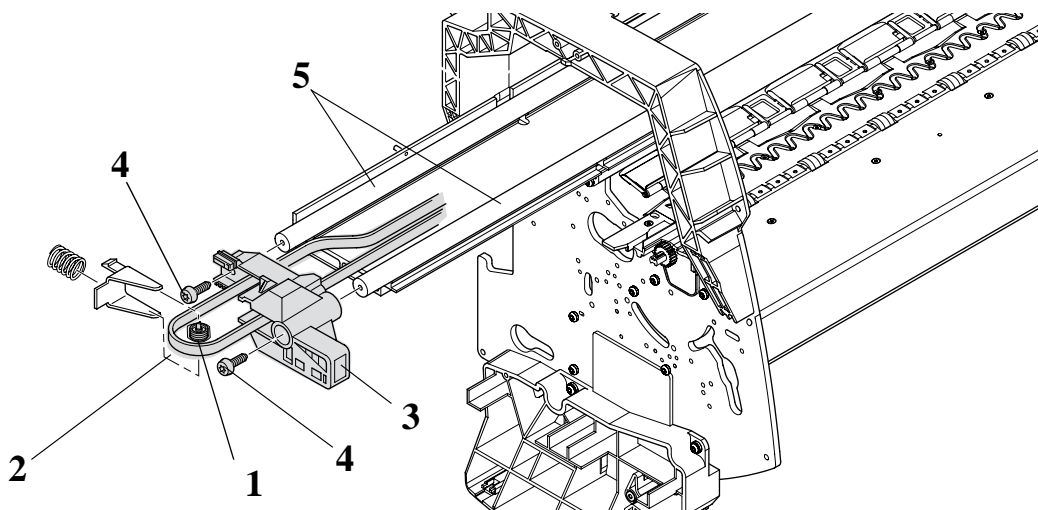


Figure 42: Tensioner Assembly

Trailing Cable

Refer to Figure 43 and Figure 44.

Removal

WARNING

Switch off the printer and remove the power cord.

1. Remove the following:
 1. "Right Hand Cover" see page 8-4.
 2. "Left Hand Cover" see page 8-13.
 3. "Left Rear Cover" see page 8-24.

NOTE

For steps 2 to 5, refer to Figure 43.

2. Manually slide the carriage (item 1) to the left side of the printer.
3. Unclip and remove the trailing cable restraining clip (item 2).
4. Carefully disconnect the trailing cable (item 3) from connectors in the Carriage PCA (item 4).
5. Remove the trailing cable from the trailing cable holder (item 5).

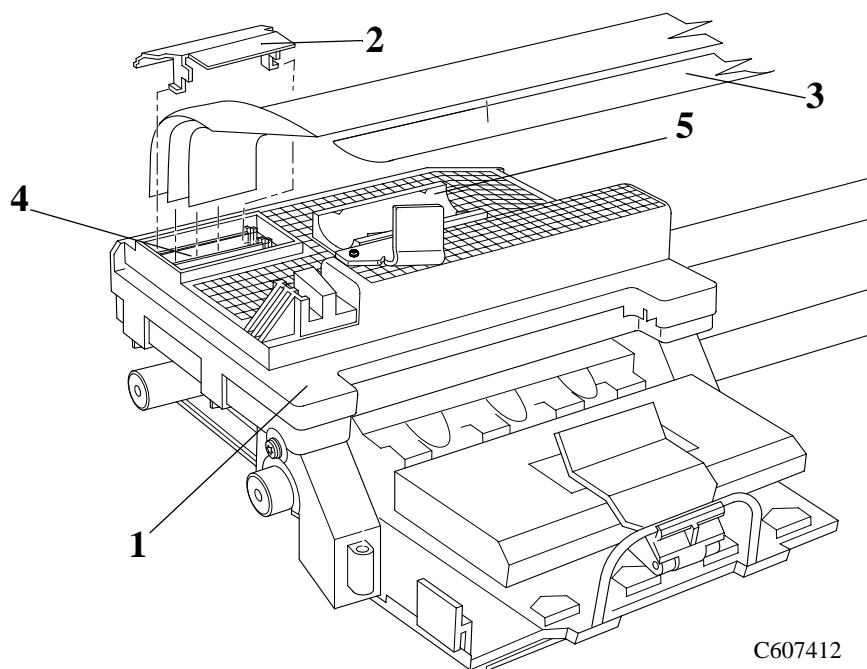


Figure 43: Trailing Cable

NOTE

For the following steps, refer to Figure 44.

6. Remove the T-15 screw (item 1) from the trailing cable holder (item 2) and remove.

7. Remove two T-10 screws (item 3) from the trailing cable clamp (item 4). Remove the trailing cable clamp (item 4).

WARNING

Be very careful when disconnecting the Trailing Cable from the Electronics Module. Incorrect handling will damage the Trailing Cable and then it will need replacing.

8. Carefully disconnect the trailing cable from the electronics module and pull the trailing cable away from the printer.

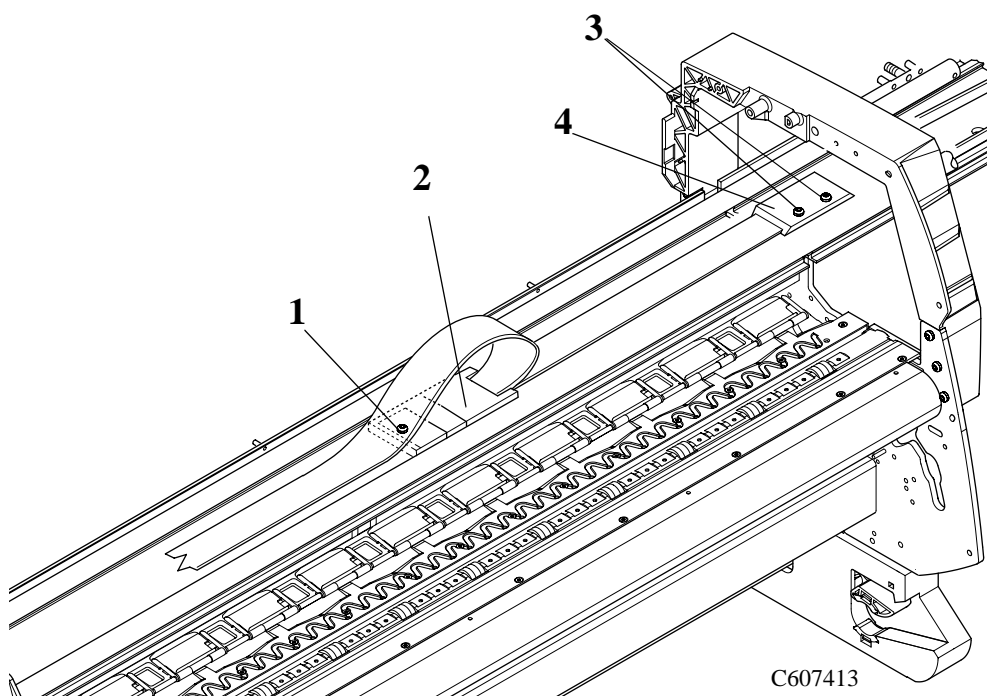


Figure 44: Trailing Cable

Installation of the Trailing Cable

WARNING

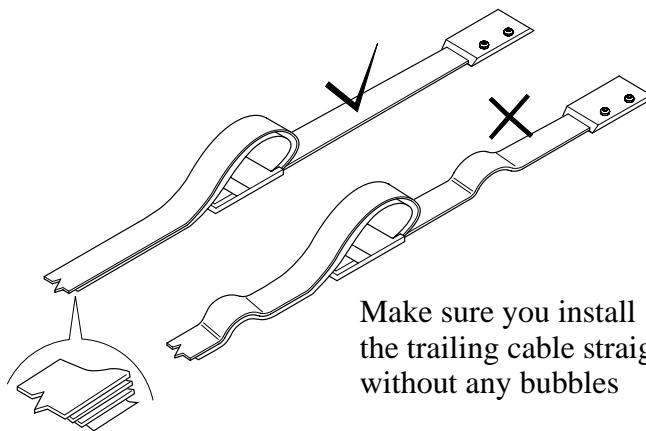
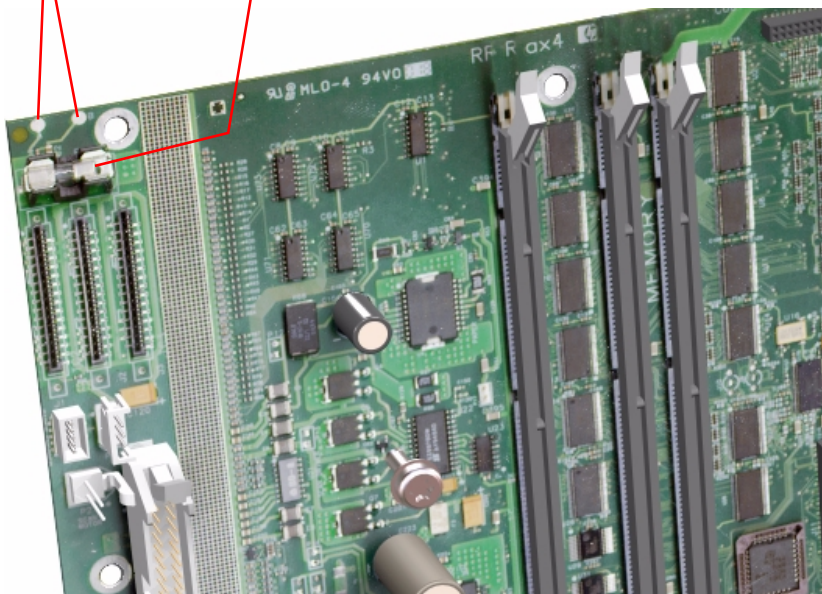
When reconnecting the Trailing Cable to the Electronics Module, make sure you connect it correctly as follows:

1. Start reconnecting the Trailing Cable from left to right (the longest strip will be connected to the 1st clip from the right).
2. Make sure you push the Trailing Cable in straight and not bent. Once the Trailing Cable is inserted, you should hear an audible click.
3. When the Trailing Cable is inserted correctly, the shaded part (as shown below) will **not** be visible.
4. **Before** powering ON the Printer, check the resistance (using a tester) between the two points (as shown below).
 - If the resistance between the 2 points is **less** than 100 ohms, then the Trailing Cable is installed **incorrectly**. Do **NOT** power ON the Printer because you will burn the internal Main PCA fuse. Disconnect the Trailing Cable and reconnect again using the above steps.

- If the resistance between the 2 points is **more** than 100 ohms, then it is possible to power ON the Printer without burning the internal Main PCA fuse.

check resistance between
these two points

Fuse



Make sure you install
the trailing cable straight
without any bubbles

C607440

Cutter Assembly

Refer to Figure 45 to Figure 47.

Removal

WARNING

Switch off the printer and remove the power cord.

1. Remove the following:
 1. "Top Cover" see page 8-39.
2. Move the carriage to a position where you can access the printhead tube connector (refer to Figure 45).

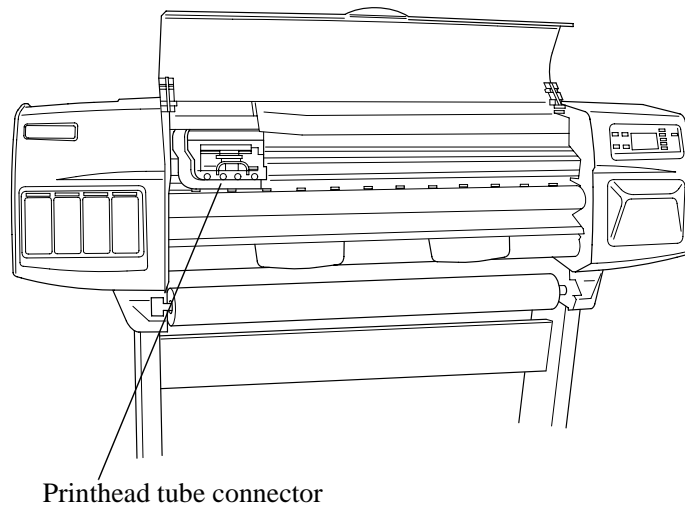


Figure 45: Cutter Assembly

NOTE

For steps 3 and 4, refer to Figure 46

3. Loosen the retaining screw T-9 at the back of the printhead tube connector.
4. Remove the printhead tube connector (refer to Figure 46).

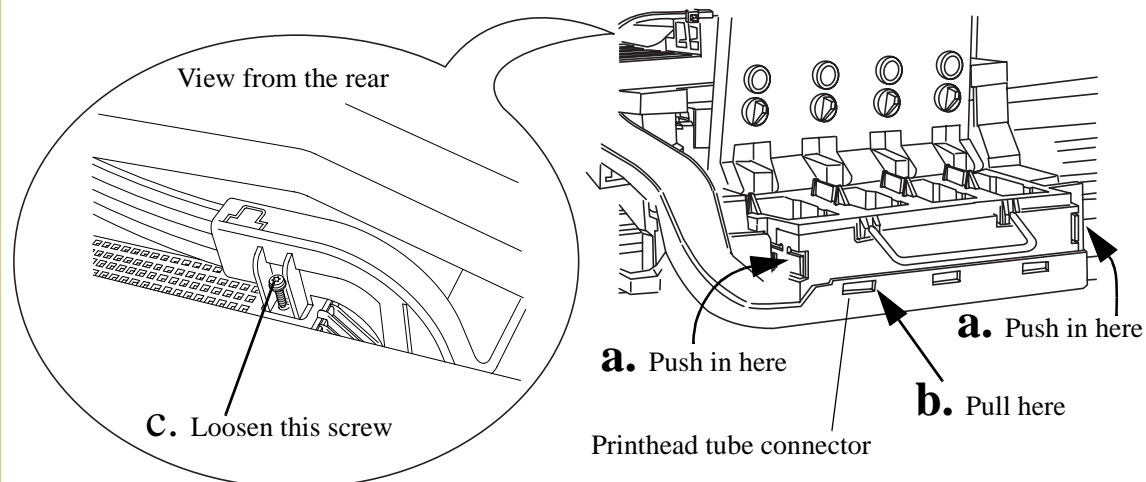


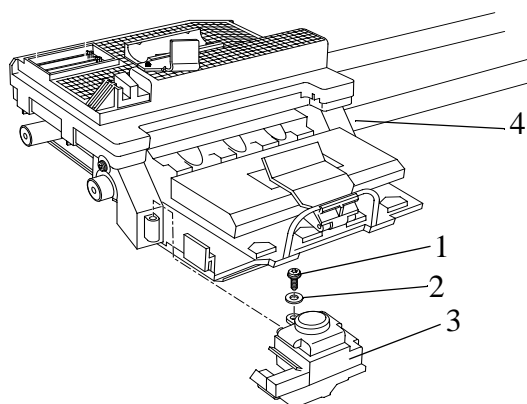
Figure 46: Cutter Assembly

5. Move the Printhead tube connector to a safe position.

NOTE

For the following steps, refer to Figure 47.

6. Remove one screw (item 1) and washer (item 2) that attaches the Cutter Assembly (item 3) to the Carriage Assembly (item 4).
7. Slide the Cutter Assembly (item 3) towards you and remove from the Printer.



C607417a

Figure 47: Cutter Assembly

Carriage Assembly and Belt

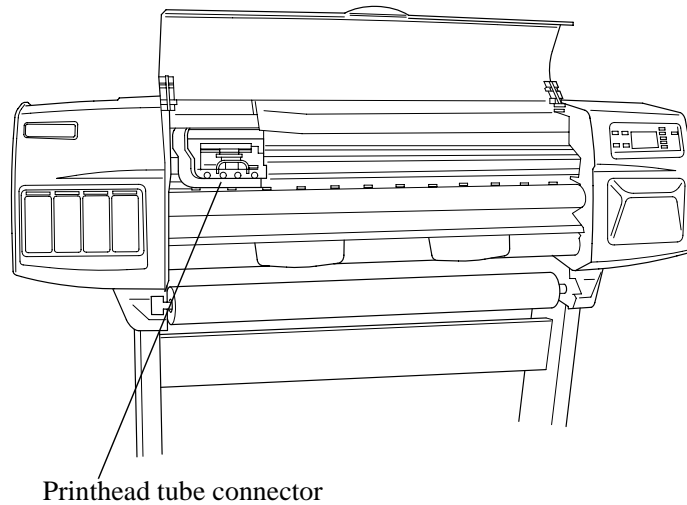
Refer to Figure 48 to Figure 58.

Removal

WARNING

Switch off the printer and remove the power cord.

1. Remove the following:
 1. "Top Cover" see page 8-39.
 2. "Right Hand Cover" see page 8-4.
 3. "Left Hand Cover" see page 8-13.
2. Move the carriage to a position where you can access the printhead tube connector (refer to Figure 48).



Printhead tube connector

Figure 48: Carriage Assembly and Belt

NOTE

For steps 3 and 4, refer to Figure 49.

3. Loosen the retaining screw T-9 at the back of the printhead tube connector.
4. Remove the printhead tube connector (refer to Figure 49).

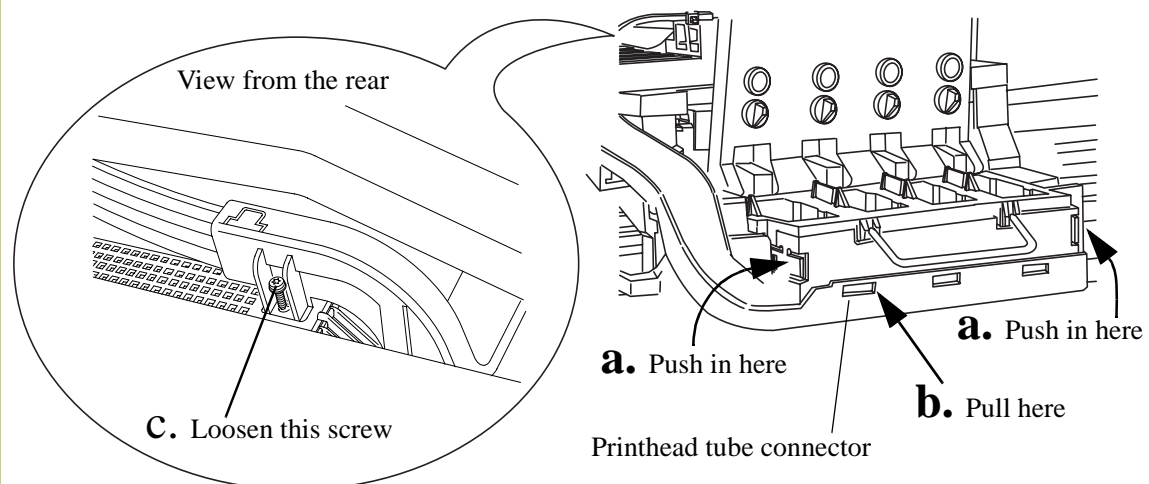
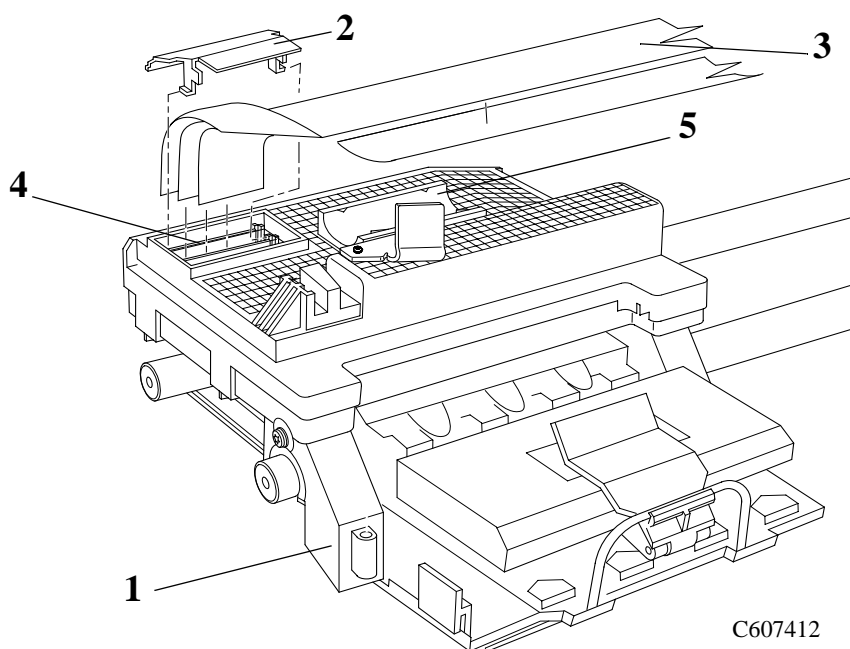


Figure 49: Carriage Assembly and Belt

5. Move the Printhead tube connector to a safe position.

NOTE**For steps 6 to 8, refer to Figure 50.**

6. Unclip and remove the trailing cable restraining clip (item 2) from the Carriage Assembly (item 1).
7. Carefully disconnect the trailing cable (item 3) from connectors in the Carriage PCA (item 4).
8. Remove the trailing cable (item 3) from the trailing cable holder (item 5).



C607412

Figure 50: Carriage Assembly and Belt

9. To release the tension on the belt (item 1) from the left hand side of the Printer, squeeze the spring (item 2) using the tensioner wedge clip (item 3) until you hear it click into place (refer to Figure 51).

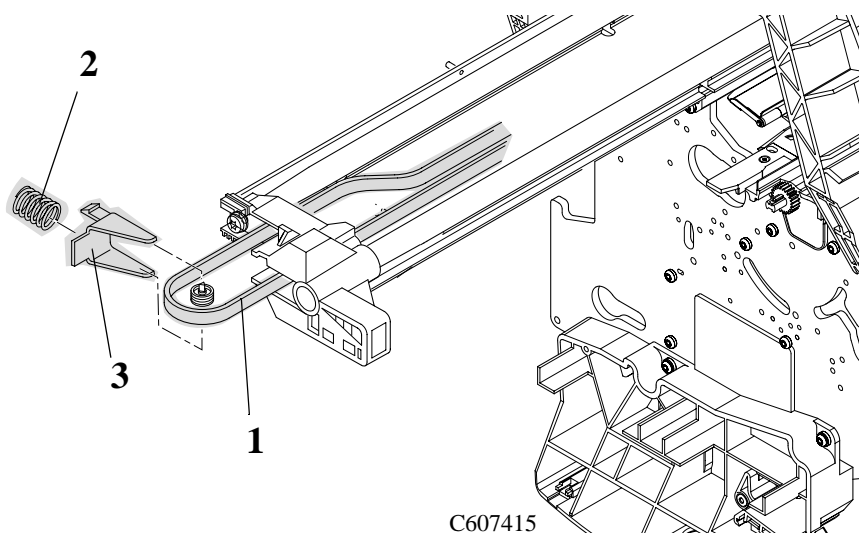


Figure 51: Carriage Assembly and Belt

10. Remove the belt (item 1) from the belt motor pulley (item 2) on the right hand side of the Printer (refer to Figure 52)

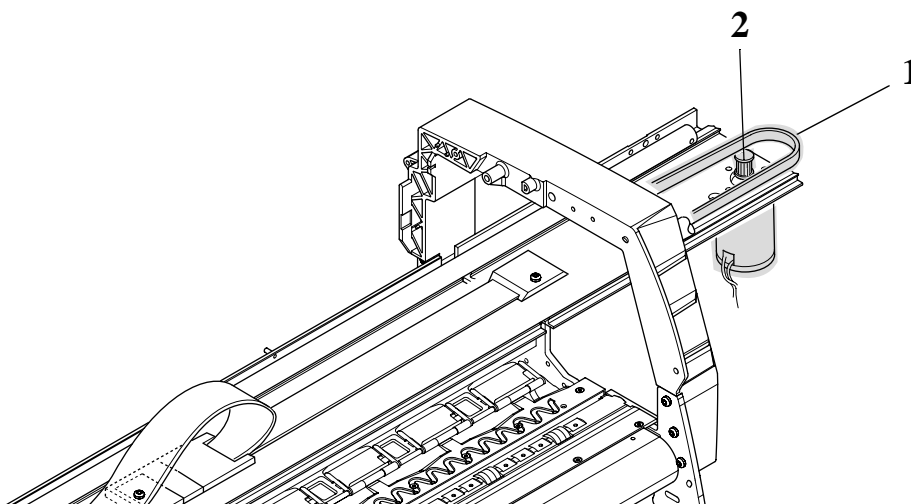


Figure 52: Carriage Assembly and Belt

NOTE For steps 11 and 12, refer to Figure 53.

11. Remove the 5.5mm nut (item 1) from the left side of the Printer that attaches the Encoder Strip (item 3) to Spring Clip (item 2).

NOTE To perform the next step use a screw driver to press the spring clip (item 2) in towards the middle of the printer.

12. Release the Encoder Strip (item 3) from the retaining pin (item 4) on the Spring Clip (item 2).

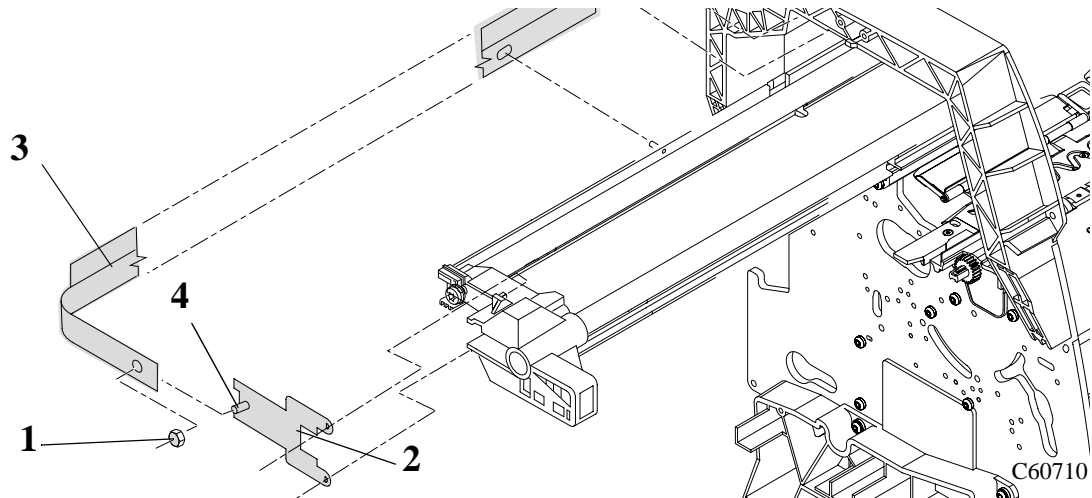


Figure 53: Encoder Strip

NOTE

For steps 13 to 15, refer to Figure 54.

- 13.** Remove the tensioner pulley (item 1) from the belt (item 2) which is located in the tensioner assembly (item 3).
- 14.** Remove the two T-15 screws (item 4) securing the tensioner assembly to the slider rods (item 5).
- 15.** Remove the tensioner assembly (item 3).

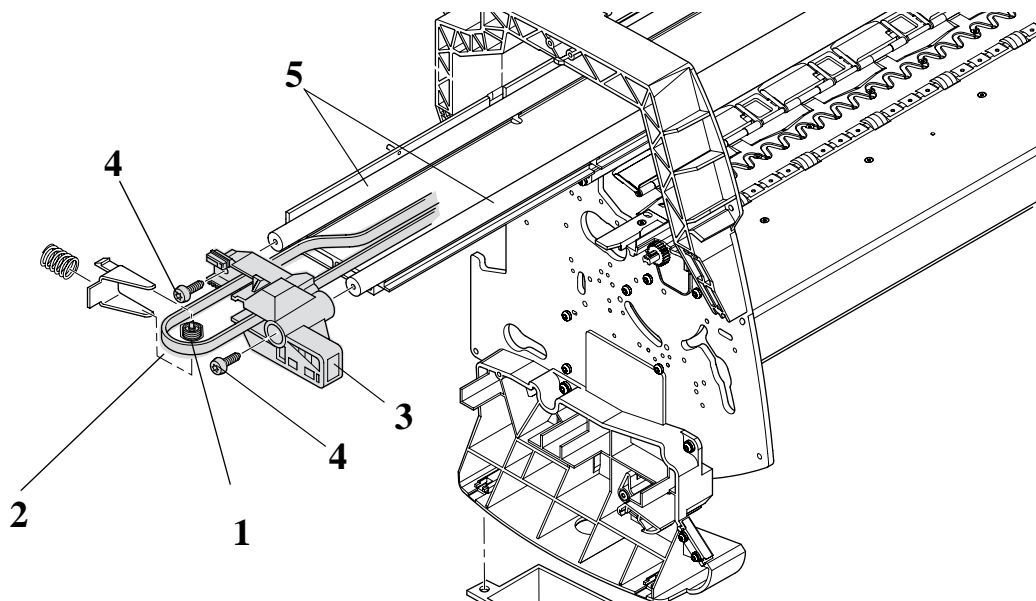


Figure 54: Carriage Assembly and Belt

NOTE

For the following steps, refer to **Figure 55**.

CAUTION

The rear bushing (item 1) on the carriage assembly is tensioned with a spring (item 2). When removing the carriage assembly (item 3) hold the rear bushing on the carriage assembly.

16. Remove the carriage assembly (item 3) by sliding it off the slider rods.
17. Remove the belt (item 4) from the carriage assembly by releasing it from retaining clips (item 5) underneath the carriage assembly.

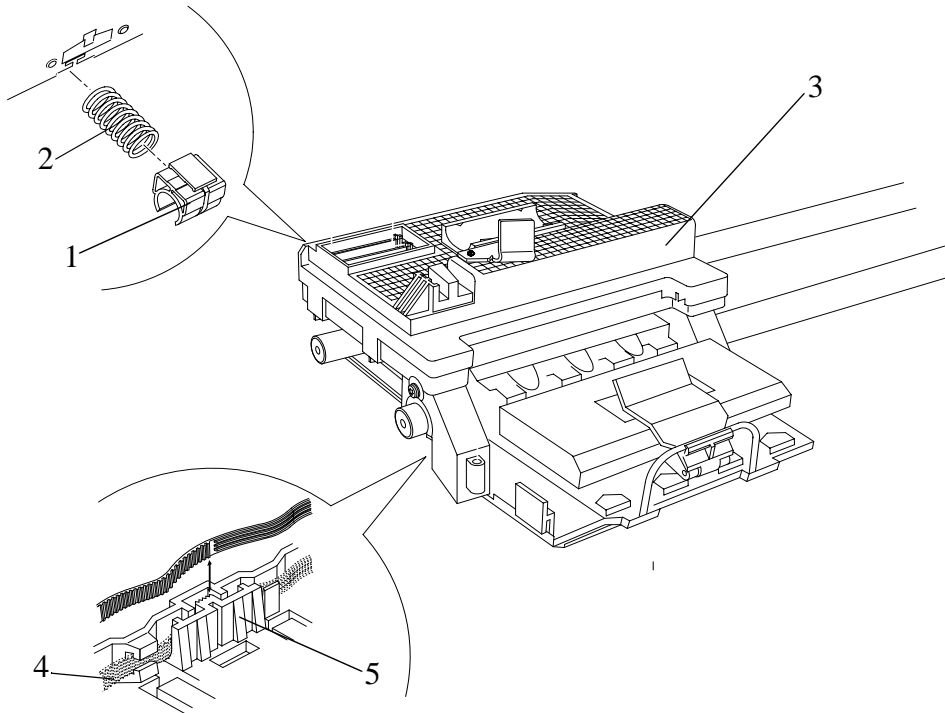


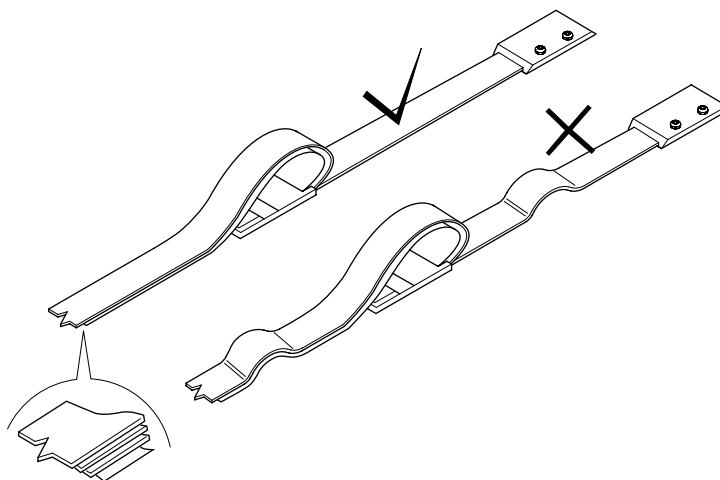
Figure 55: Carriage Assembly and Belt

Installation of the Carriage Assembly

NOTE

Please take note of the following steps when installing the Carriage Assembly.

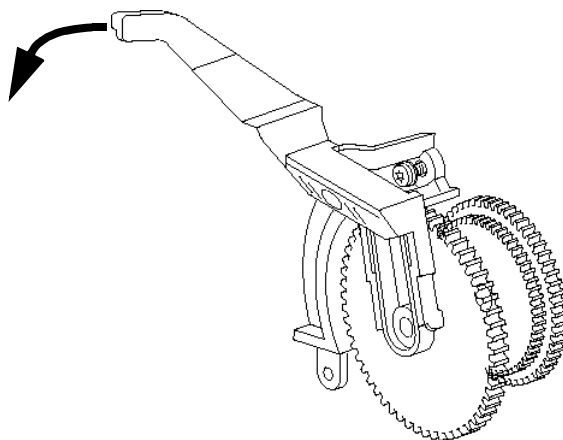
1. Make sure that the trailing cable is seated correctly and that the trailing cable support is straight and has NO bubbles as shown in Figure 56.



C607441

Figure 56: Trailing Cable Installation

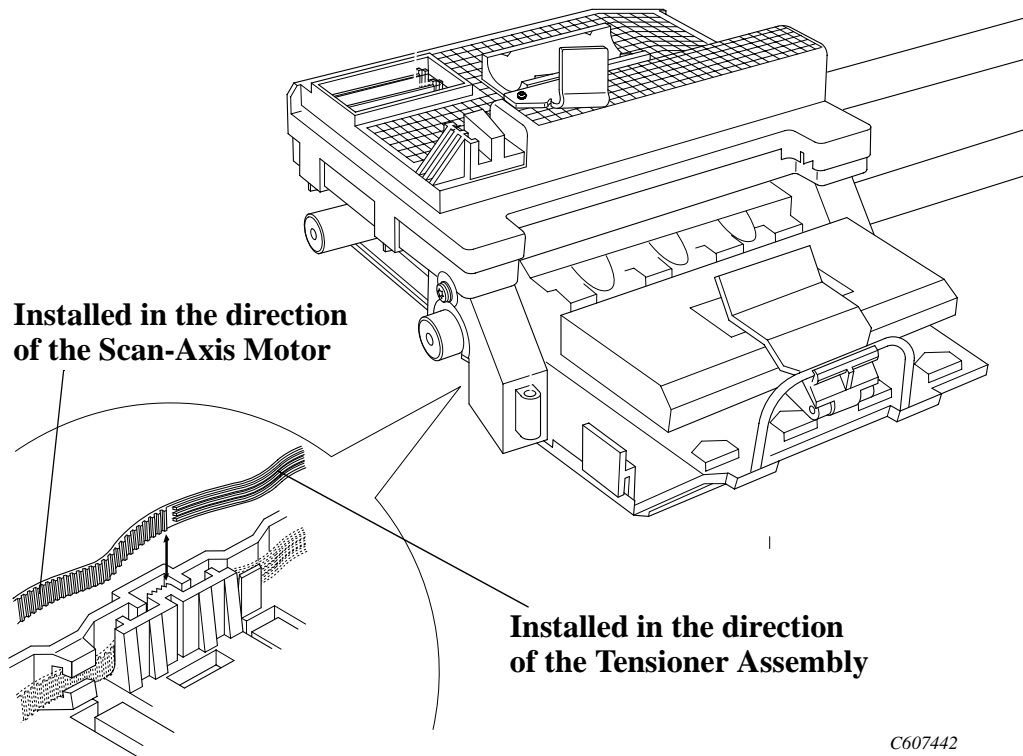
2. When installing the Carriage, engage the Clutch Arm as shown in Figure 57.



C607420d

Figure 57: Clutch Assembly

3. When installing the belt, make sure it is not twisted and is installed in the correct orientation as shown in Figure 58.



C607442

Figure 58: Belt Installation

NOTE

You must perform the following Service Calibrations after the installation of the Carriage Assembly.

- Carriage Height Calibration ⇒ Page 5-24.
- Line Sensor ⇒ Page 5-9.
- Service Station ⇒ Page 5-11.
- Roller Mark Position ⇒ Page 5-13.
- Color to Color Calibration ⇒ Page 5-16.
- Pen Alignment ⇒ Page 5-22.

Tubes System Assembly

Refer to Figure 59 to Figure 70.

Removal

1. Remove the Printheads, Ink Cartridges and the Printhead cleaners. (Refer to the User's Guide for details)

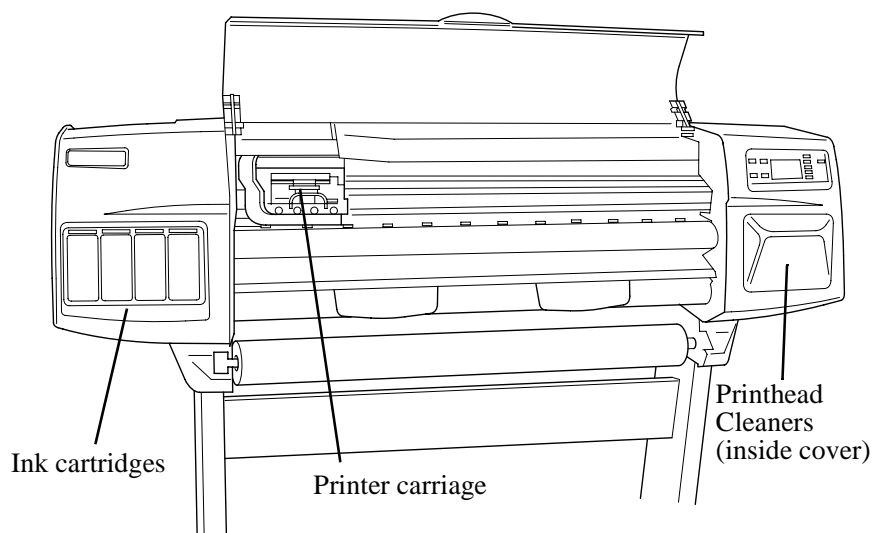


Figure 59: Printer Carriage Location

WARNING

Now turn off the printer with the main power switch at the rear of the printer.

2. Move the carriage to a position where you can access the printhead tube connector (Refer to Figure 60).

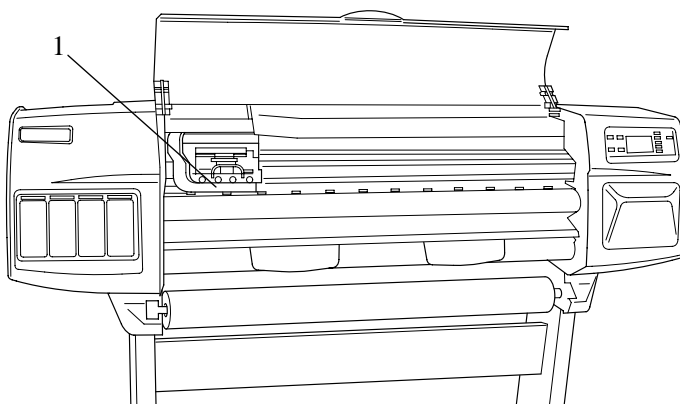


Figure 60: Printhead Tube Connector

3. Remove the following:

1. "Window" see page 8-38.
2. "Top Cover" see page 8-39.

NOTE

For the following steps, refer to Figure 61.

4. Loosen the retaining screw T-9 at the back of the printhead tube connector.
5. Remove the printhead tube connector.

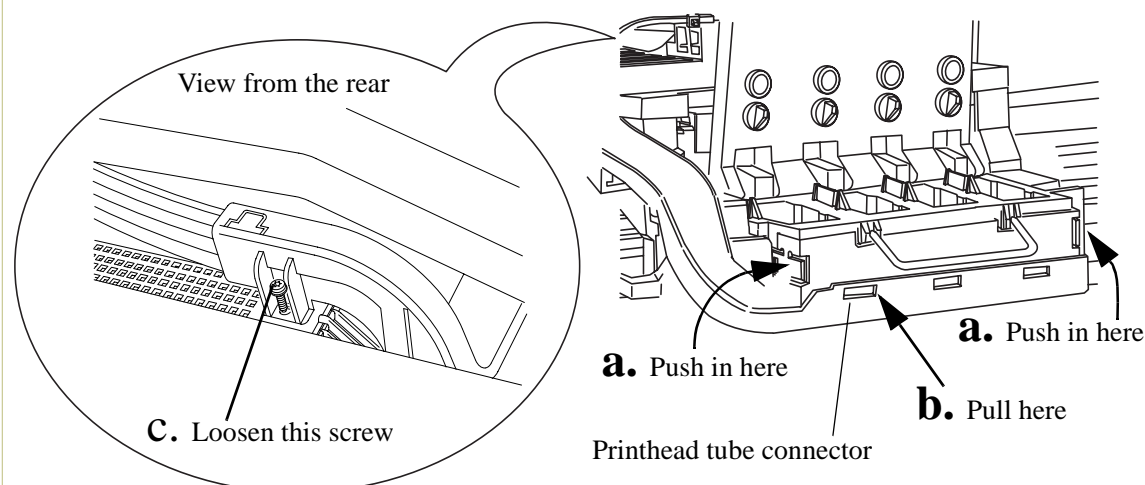


Figure 61: Printhead Tube Connector Removal

6. Remove the tube retaining clip (item 1) from the back of the printer (refer to Figure 62).

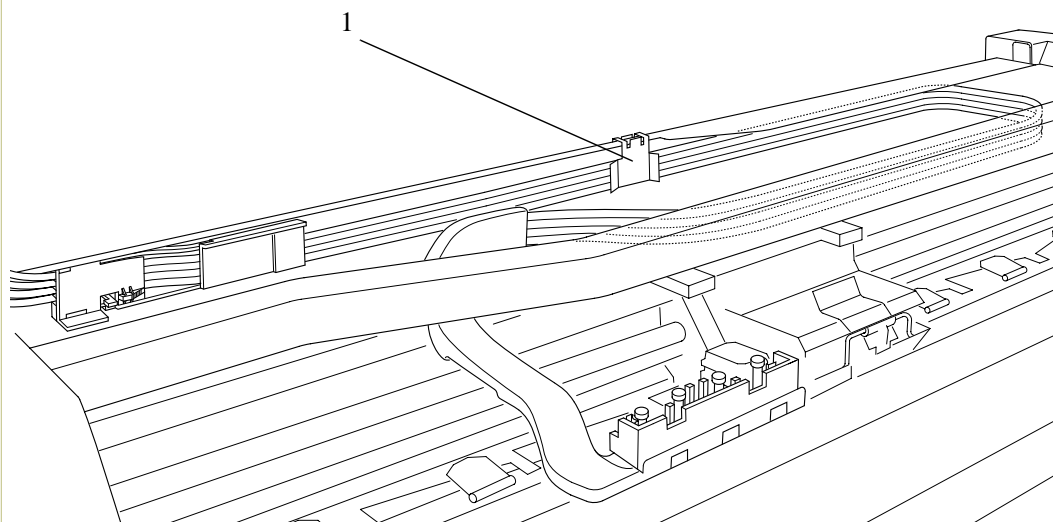


Figure 62: Tube Retaining Clip

NOTE

Working from the rear of the printer.

7. Open the door at the back of the left hand cover by removing two T15 screws (item 1) (refer to Figure 63).

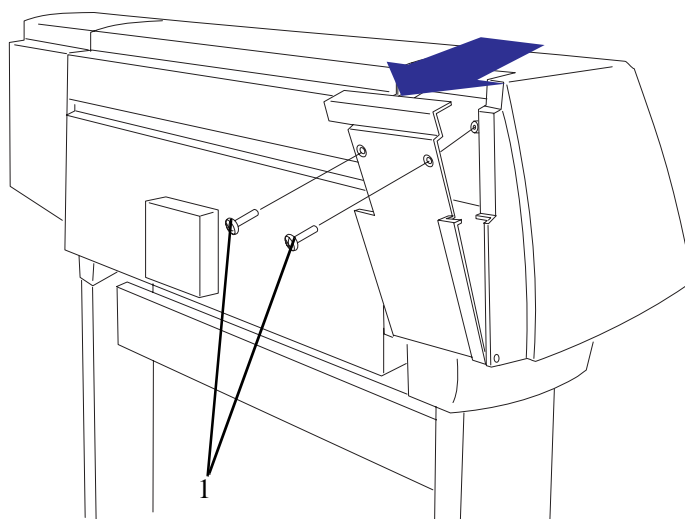


Figure 63: Rear Left Hand Cover

8. Release the tube holder (item 1) from the rear of the left hand cover by pushing it up and out (refer to Figure 64).

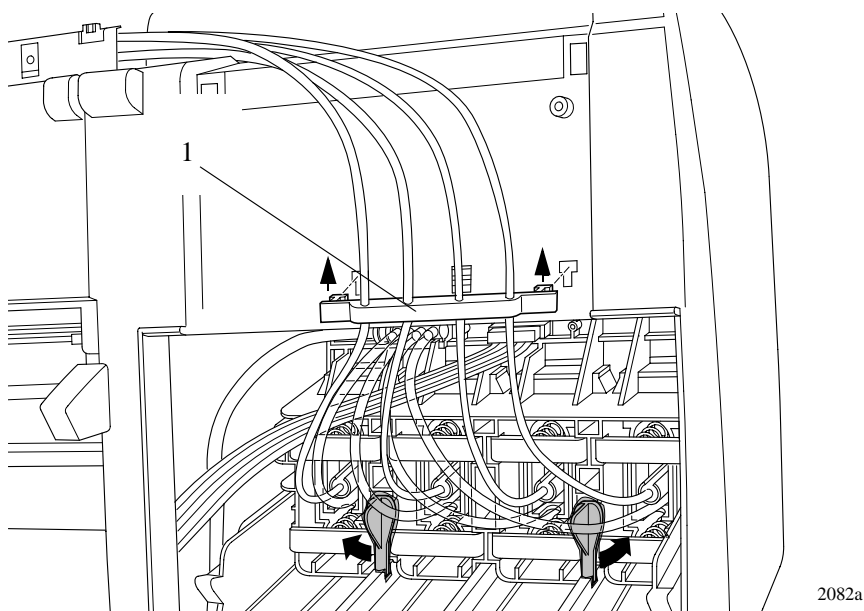


Figure 64: Rear Tube Grip

9. Twist the two latches (item 1) at the rear of the ink cartridge tube connector (item 2) to the outwards. This will release the complete assembly (refer to Figure 65).

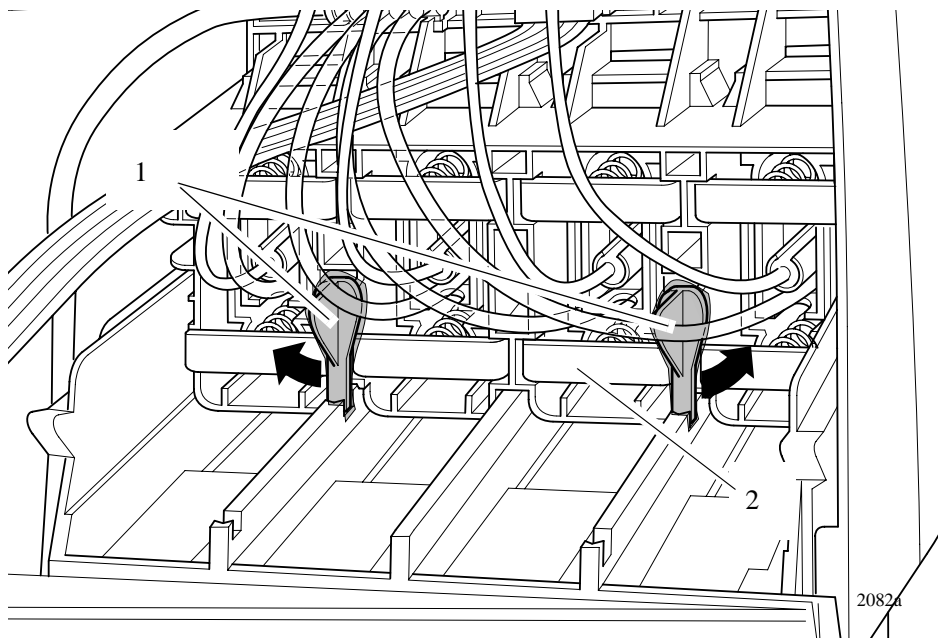


Figure 65: Latches

- 10.** Slide the ink cartridge tube connector assembly (item 1) towards you (refer to Figure 66).

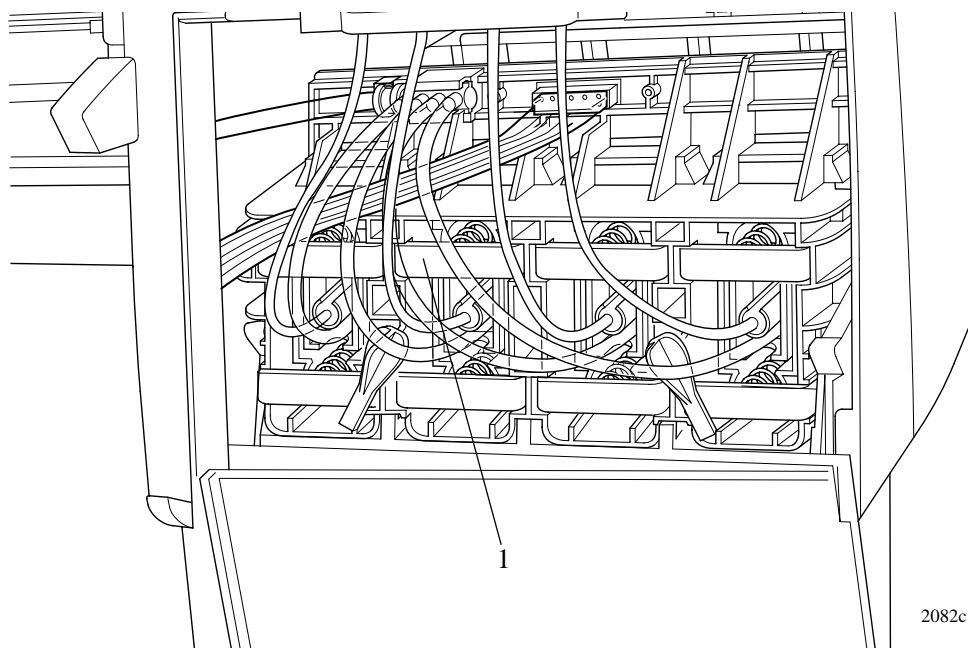


Figure 66: Ink Cartridge Tube Connector (pulled back)

- 11.** Disconnect the ink cartridge tube connector cable (item 1) (refer to Figure 67).

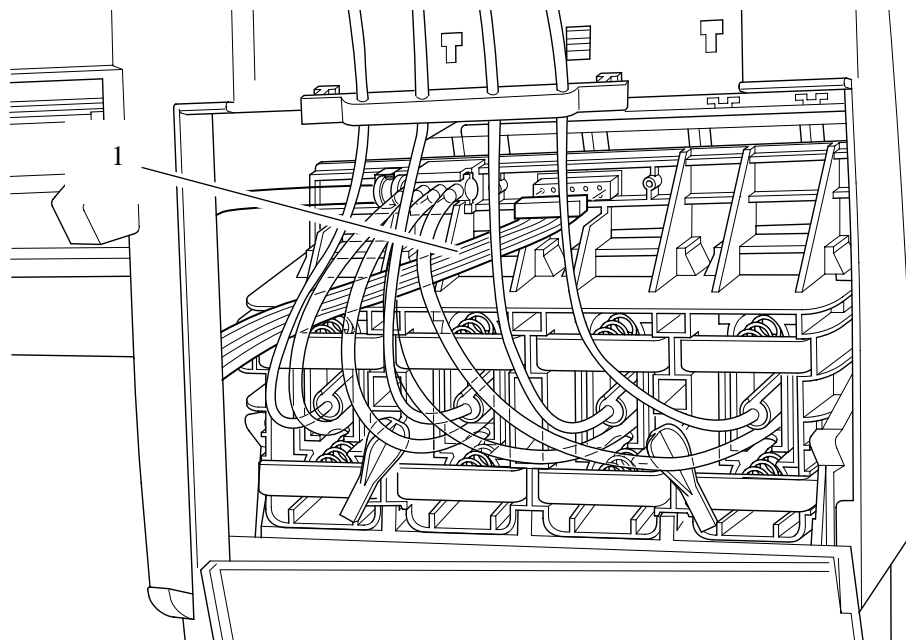


Figure 67: Ink Cartridge Tube Connector Cable

12. Disconnect the air tube (refer to Figure 68).

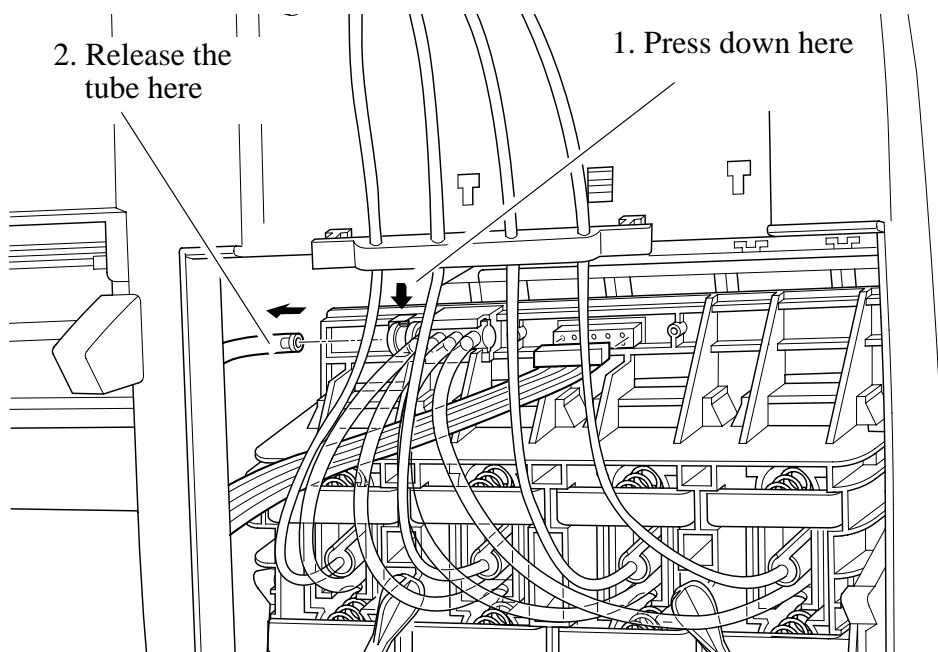
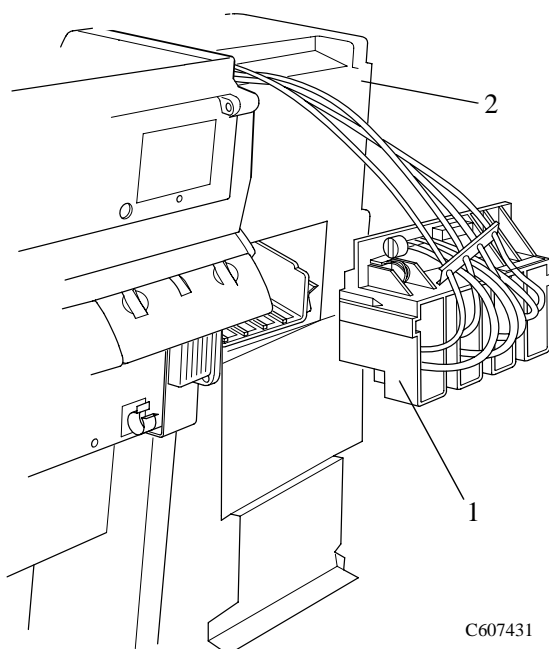


Figure 68: Air Tube

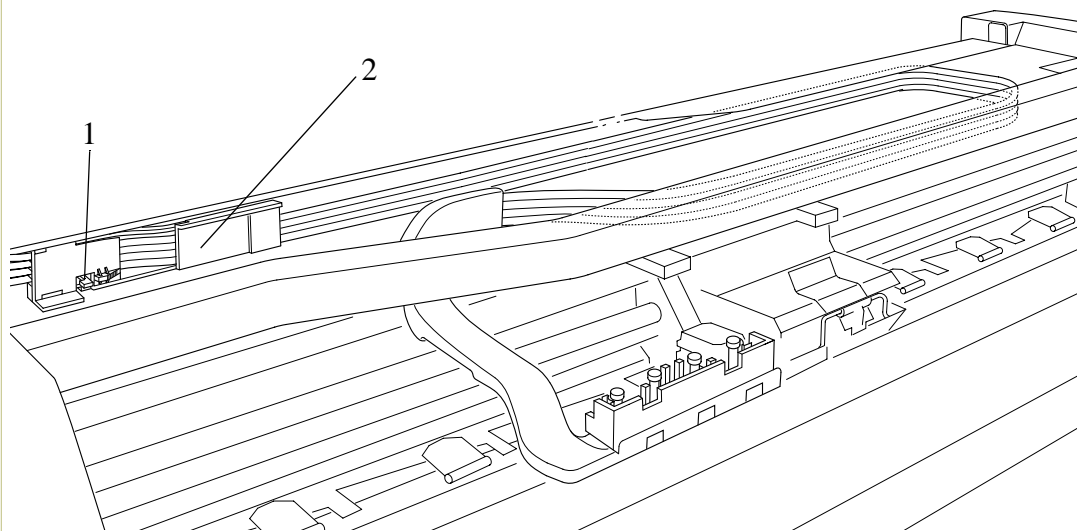
13. Remove the ink cartridge tube connector (item 1) from the rear of the left hand cover (item 2), rest the assembly on the left hand cover (refer to Figure 69).



C607431

Figure 69: Ink Cartridge Tube Connector (pulled out)

- 14.** Push the tab (item 1) towards you and then push the complete tube retaining clip (item 2) to the right and then pull towards you (refer to Figure 70)

**Figure 70: Tube Retaining Clip****CAUTION**

The complete ink tube system is full of ink.

- 15.** Now you can remove the complete Tubes System from the printer by sliding the tubes from between the tube guides.

Restarting the printer

- 1 Turn the printer ON from the main power switch at the rear of the printer and from the power switch on the front panel.
2. The front panel displays:

System Startup
Press Enter to Continue

C4704034

3. Press the **Enter** button.
4. Lift up the window and install four setup printheads into the Printhead carriage. (Refer to the User's Guide for details).
5. Install the Ink Cartridges. (Refer to the User's Guide for details).
6. The front panel displays:

Initializing printer
Wait

C4704034

7. Wait for about 30 seconds.
8. Remove the setup printheads from the printer carriage.
9. Install the Printheads and the Printhead Cleaners (Refer to the User's Guide for details).

NOTE

You must perform the following Service Calibrations after the installation of the Tubes System.

- Calibrations Backup ⇒ Page 5-19.
- Pen Alignment ⇒ Page 5-22.

Ink Leak Detector Assembly (hp designjets 1050c and 1055cm only)

Refer to Figure 71 to Figure 73.

Removal

WARNING

Switch off the printer and remove the power cord.

1. Remove the following:
 1. "Window" see page 8-38.
 2. "Top Cover" see page 8-39.
 3. "Back Cover" See Page 8-40.
 4. "Right Rear Cover" See Page 8-24.

NOTE

Working from the rear of the printer.

2. Open the door at the back of the left hand cover by removing two T15 screws (item 1) (refer to Figure 71).

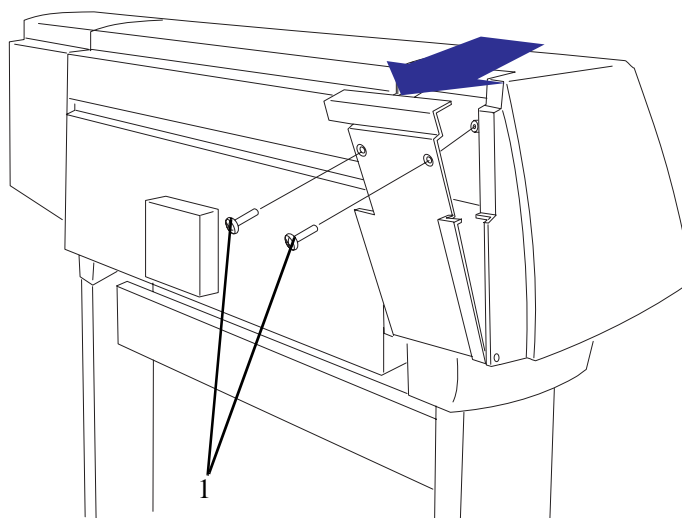


Figure 71: Rear Left Hand Cover

3. Disconnect the Leak Detector Cable from position **P4 INK LEAK DETECTOR** on the Electronics Module.
4. Locate the clip that attaches the Leak Detector Cable to the side plate. Remove the screw that attaches the clip to the side plate.

5. Remove the screw and clip (item 2) from the back of the Printer and disconnect the Ink Leak Detector Cable Connector (item 1) as shown in Figure 72. The Ink Leak Detector Cable can now be removed completely

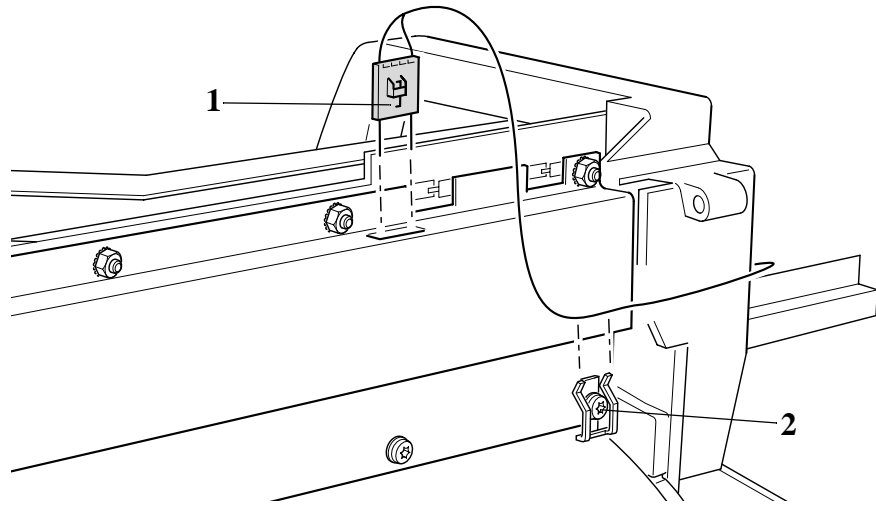


Figure 72: Leak Detector Cable

6. Unclip the Leak Detector from the Printer and remove as shown in Figure 73.

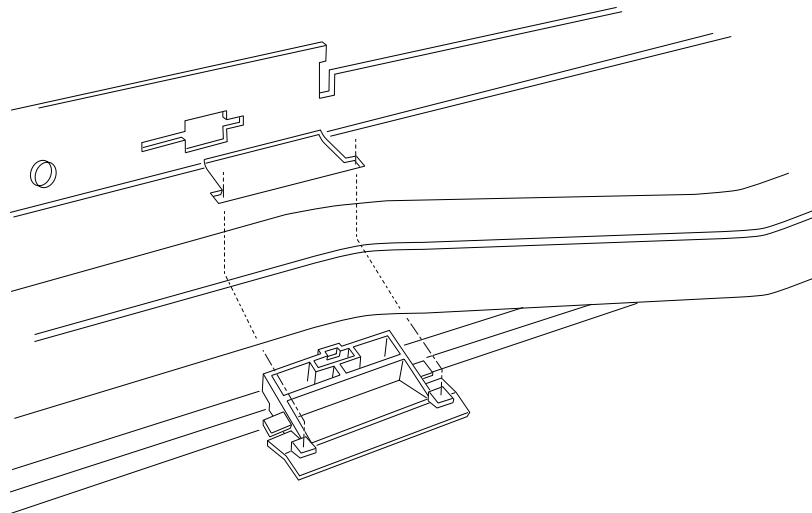


Figure 73: Leak Detector

Front Platen Assembly

Refer to Figure 74.

Removal

WARNING

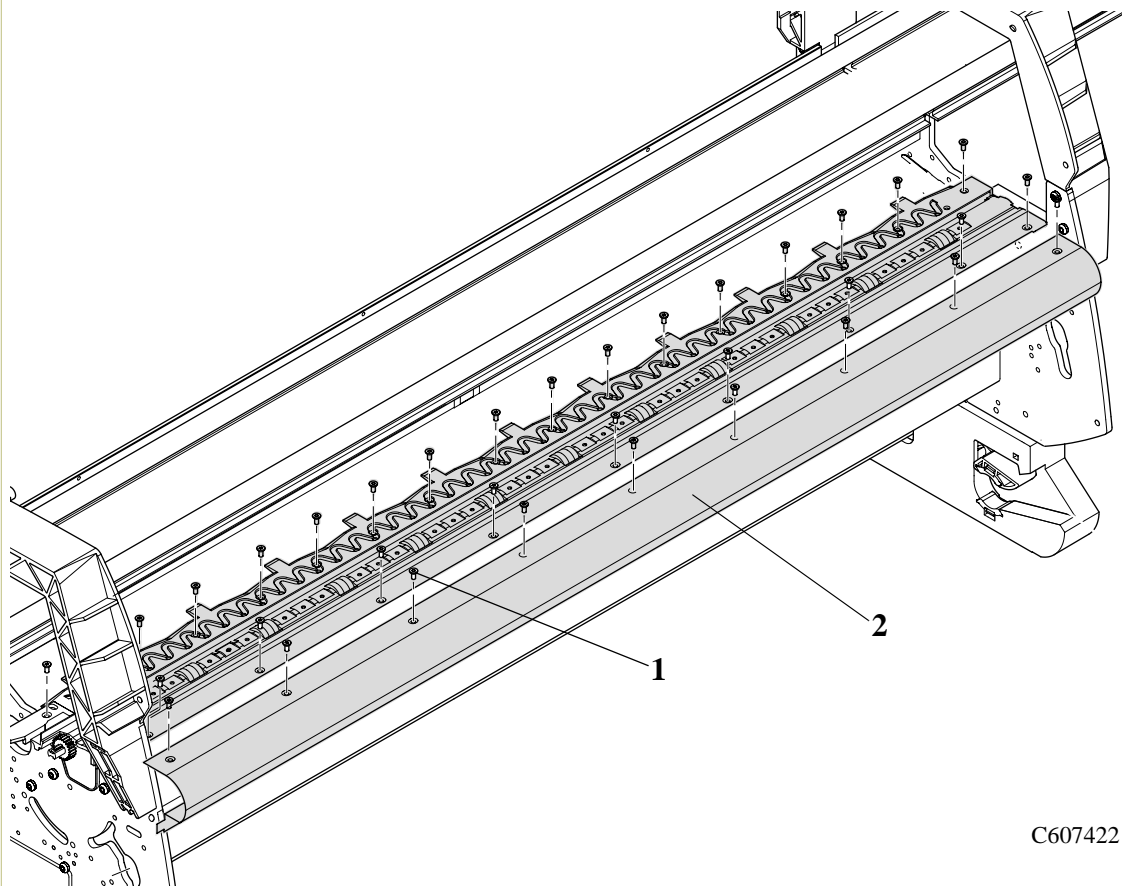
Switch off the printer and remove the power cord.

1. Open the window.

NOTE

In the following steps, please treat the screws with great care as they can easily be damaged.

2. Remove the nine T-10 screws (item 1) from the front platen assembly (item 2) and remove the front platen.



C607422

Figure 74: Front Platen Assembly

Platen Assembly

Removal

WARNING

Switch off the printer and remove the power cord.

1. Open the window.

NOTE

In the following steps, please treat the screws with great care as they can easily be damaged.

2. Remove twenty-nine screws T-10 screws (item 1) from the platen assembly (item 2) and remove the platen assembly (see Figure 75).

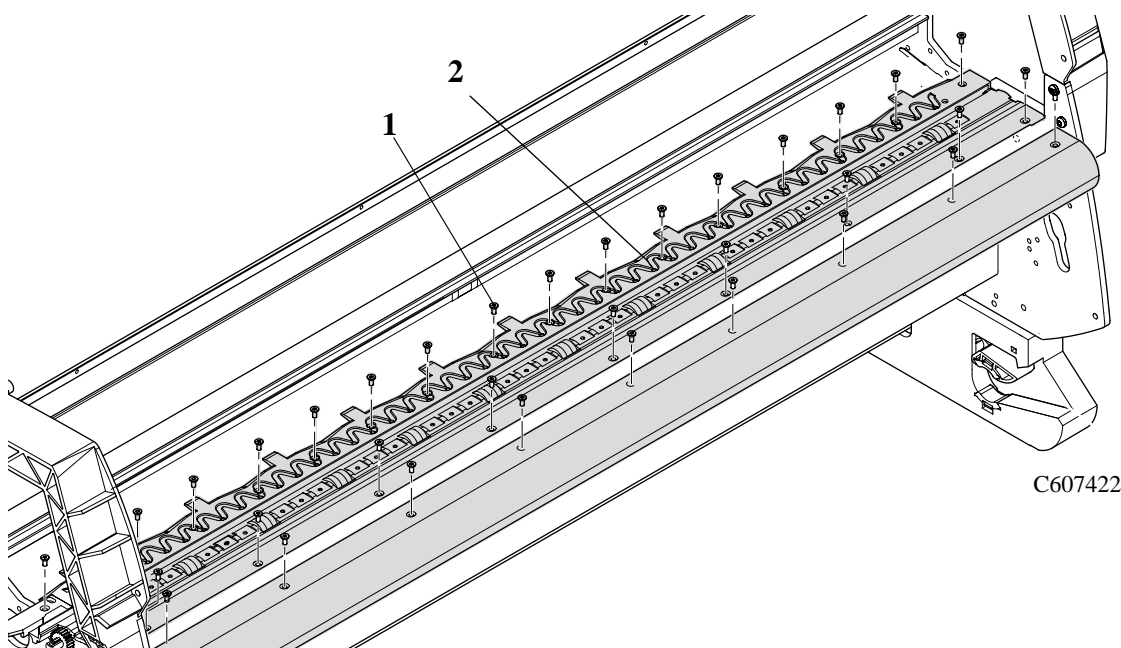


Figure 75: Platen Assembly

Installation of the Platen Assembly

CAUTION

When installing the Platen Assembly, make sure the screws are installed properly so that the heads of the screws do not interfere with the media path when the printer is in use. Do not exceed a torque of 10 psi on the screws.

NOTE

You must perform the following Service Calibrations after the installation of the Platen Assembly.

- Carriage Height Calibration ⇒ Page 5-24.
- Service Station ⇒ Page 5-11.
- Color to Color Calibration ⇒ Page 5-16.

Paper Entry Assembly

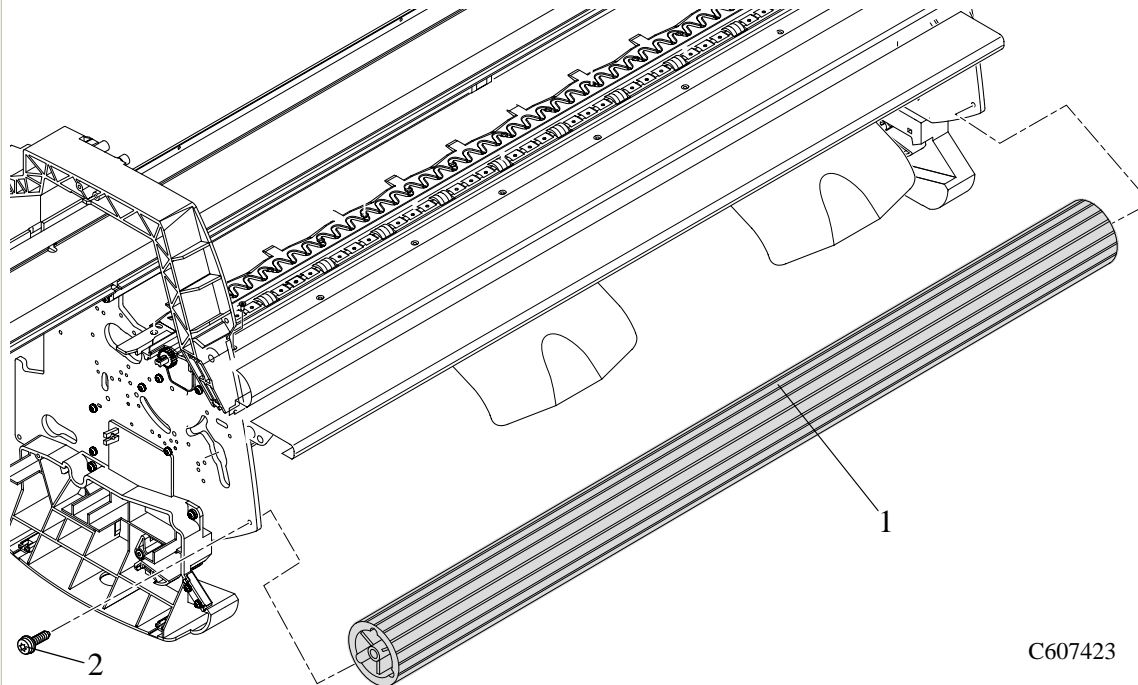
Refer to Figure 76 to Figure 78.

Removal

WARNING

Switch off the printer and remove the power cord.

1. Remove the following:
 1. "Left Hand Cover" see page 8-13.
 2. "Left Hand Trim" see page 8-18.
 3. "Ink Supply System Assembly" see page 8-19.
 4. "Clutch Assembly and Miscellaneous Parts" see page 8-21.
2. Remove the T-15 screws (item 2) securing the entry roller (item 1) to the left hand chassis (refer to Figure 76). Pull out the left side of the entry roller first and then remove completely.



C607423

Figure 76: Entry Roller

3. Remove the T-10 screw (item 1) from the linkage rod (item 2) and the pinch-wheel cam (item 3) (refer to Figure 77).

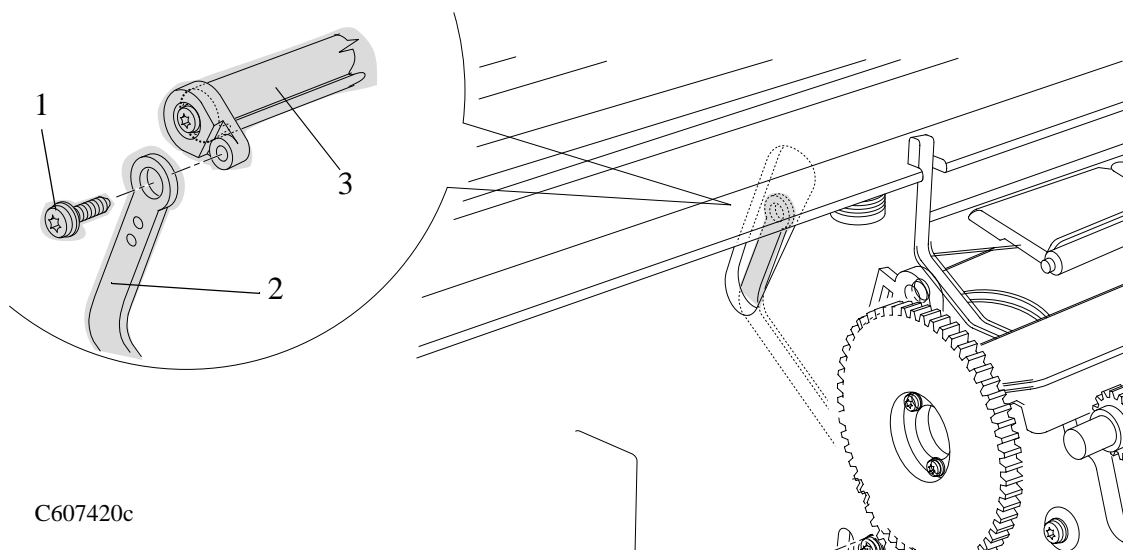


Figure 77: Linkage Rod

NOTE

For steps 4 and 5, refer to Figure 78.

4. Release the right side of the paper entry assembly (item 1) from a retaining hole in the right hand side chassis.
5. Remove the right side of the paper entry assembly (item 1) first and then the left side.

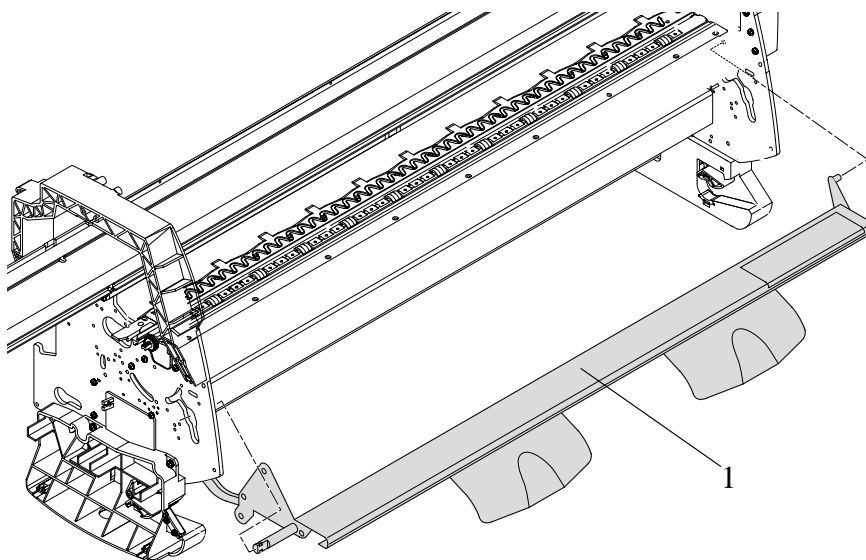


Figure 78: Paper Entry Assembly

Roller Guide

Refer to Figure 79 to Figure 82.

Removal

WARNING

Switch off the printer and remove the power cord.

1. Remove the following:
 1. "Left Hand Cover" see page 8-13.
 2. "Right Hand Cover" see page 8-4.
 3. "Electronics Module" see page 8-25.
 4. "Ink Supply System Assembly" see page 8-19.
 5. "Service Station Assembly" see page 8-8.
 6. "Paper-axis Motor Assembly" see page 8-12.

NOTE

Working from the rear of the printer.

2. Remove the two T-15 screws (item 1) securing the left hand rear platen mount (item 2) (refer to Figure 79)
3. Remove the two T-15 screws (item 3) securing the right hand rear platen mount (item 4) (refer to Figure 79).

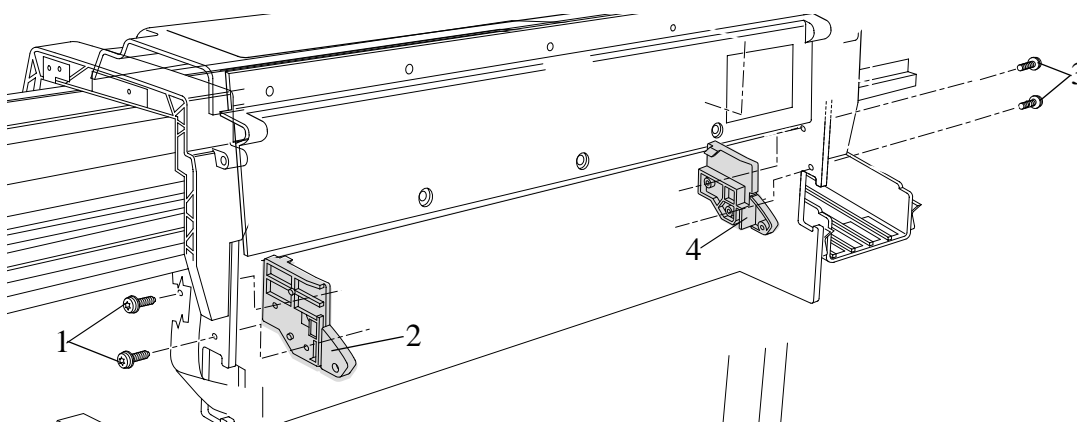


Figure 79: Platen Mounts

4. Remove the four T-15 screws (item 1) securing the left hand electronic module mount (item 2) to the left hand side chassis (refer to Figure 80).

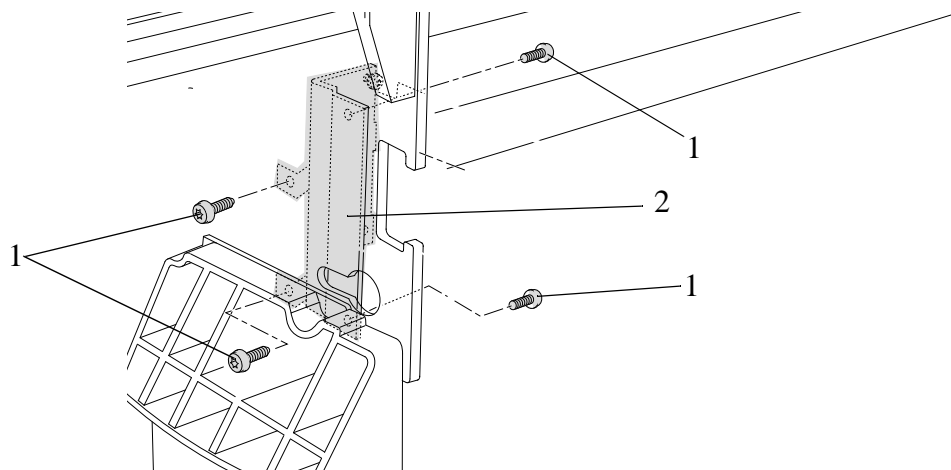


Figure 80: Left Electronic Module Mount

5. Remove the four T-15 screws (item 1) securing the right hand electronic module mount (item 2) to the right hand side chassis (refer to Figure 81).

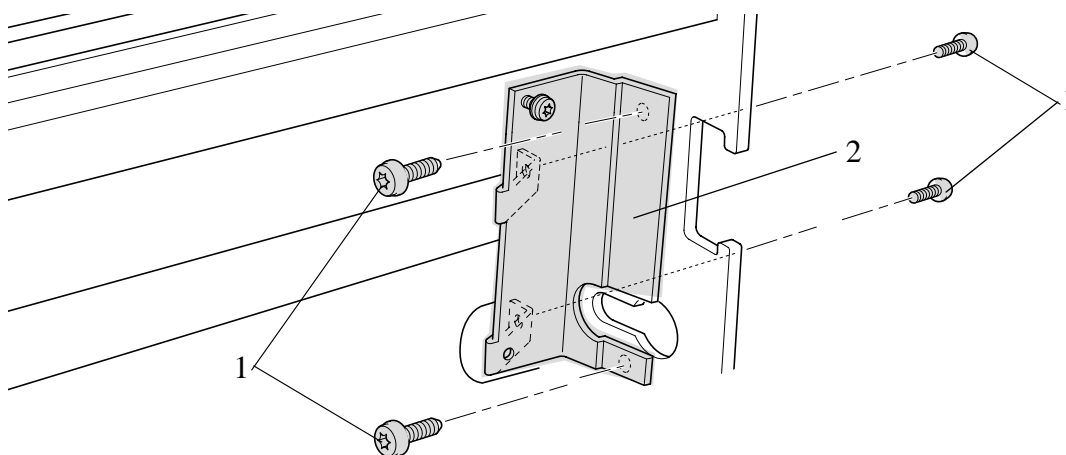


Figure 81: Right Electronic Module Mount

NOTE

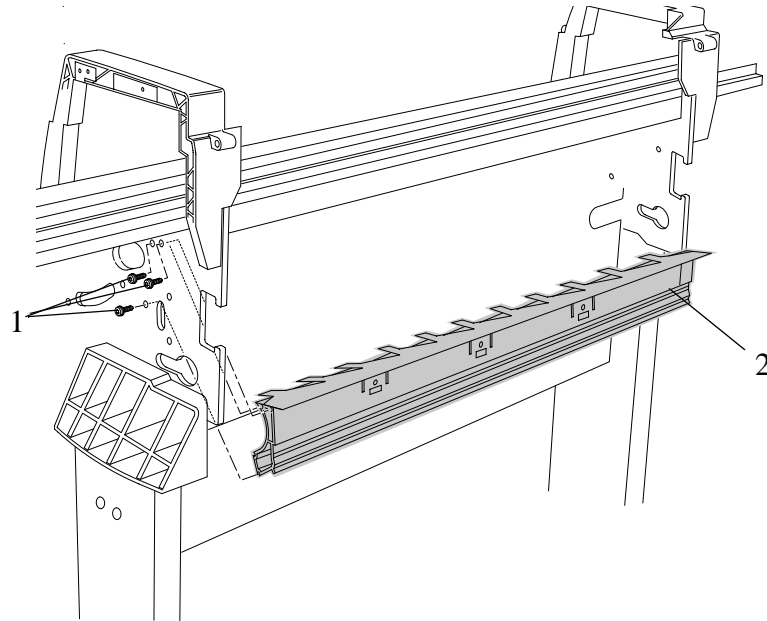
For the following steps refer to Figure 82.

6. Remove the three T-15 screws from the right side of the roller guide assembly (item 2).

NOTE

Be careful not to drop the roller guide once the securing fasteners have been removed.

7. Remove the three T-15 screws (item 1) from the left side of the roller guide assembly and remove.



C607431b

Figure 82: Roller Guide

Media Holder Strip

Refer to Figure 83.

Removal

WARNING

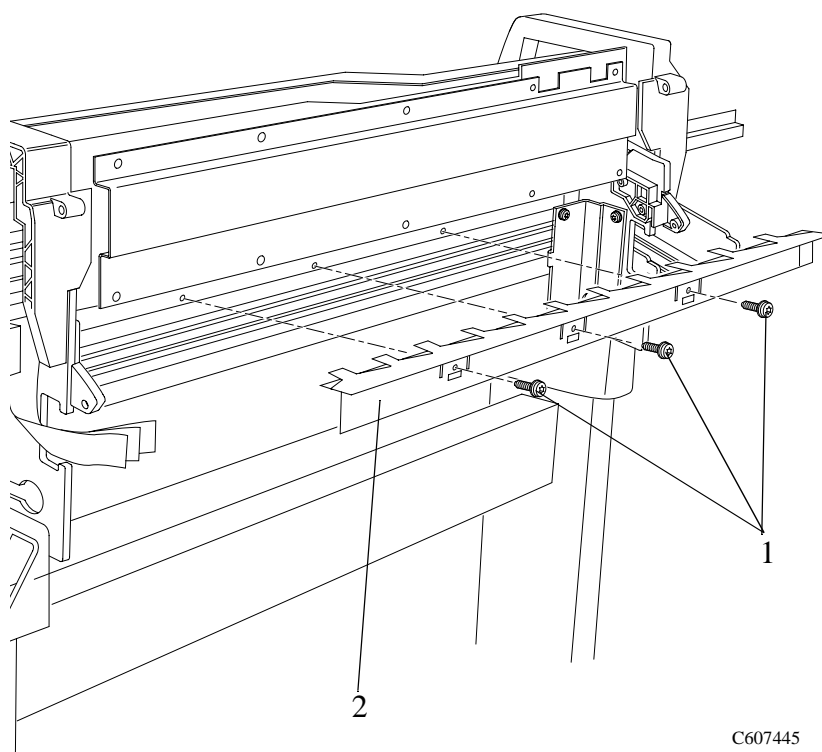
Switch off the printer and remove the power cord.

1. Remove the following:
 1. "Electronics Module" see page 8-25.

NOTE

Working from the rear of the printer.

2. Remove the three T-15 screws (item 1) securing the Media Holder Strip (item 2) to the Roller Guide (refer to Figure 83)



C607445

Figure 83: Media Holder Strip

Drive Roller

Refer to the Figure 84.

Removal

WARNING

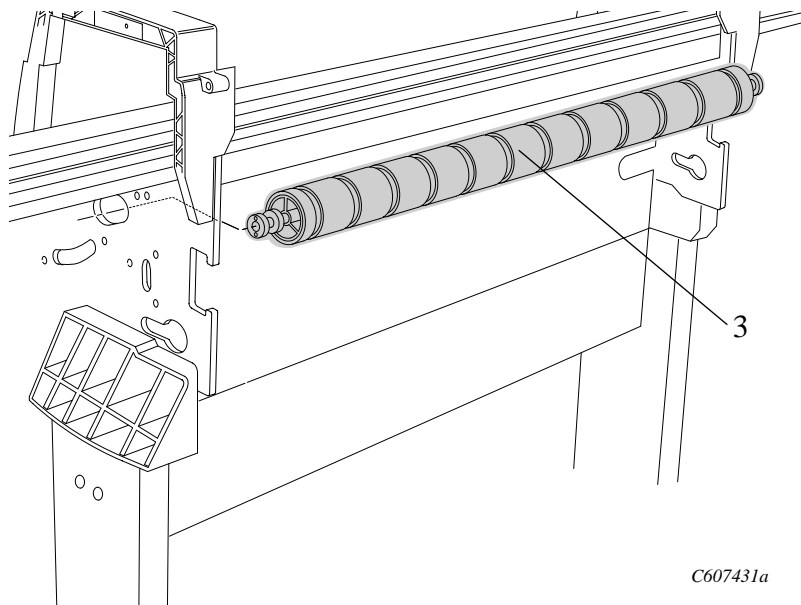
Switch off the printer and remove the power cord.

1. Remove the following:
 1. "Clutch Assembly" see page 8-21.
 2. "Roller Guide" see page 8-74.

NOTE

Working from the rear of the printer.

2. Remove the roller (item 1) as follows:
 - a Pull the left side of the roller towards you and then pull the right side of the roller towards you
 - b Move the complete roller to the left.
 - c Remove the right side of the roller first and then the left side.



C607431a

Figure 84: Drive Roller

NOTE

You must perform the following Service Calibrations after the installation of the Drive Roller.

- Accuracy Calibration ⇒ Page 5-6.
- Color to Color Calibration ⇒ Page 5-16.

Center Guide

Refer to Figure 85 to Figure 87.

Removal

WARNING

Switch off the printer and remove the power cord.

1. Remove the following:
 1. "Left Hand Cover" see page 8-13.
 2. "Right Hand Cover" see page 8-4.
 3. "Electronics module" see page 8-25.
 4. "Ink Supply System Assembly" see page 8-19.
 5. "Clutch assembly" see page 8-21.
 6. "Service Station" see page 8-8.
 7. "Vacuum Fan" see page 8-11.
2. Lift up the paper entry assembly.
3. Remove the two T-15 screws from the left hand side plate securing the left side of the center guide (refer to Figure 85).

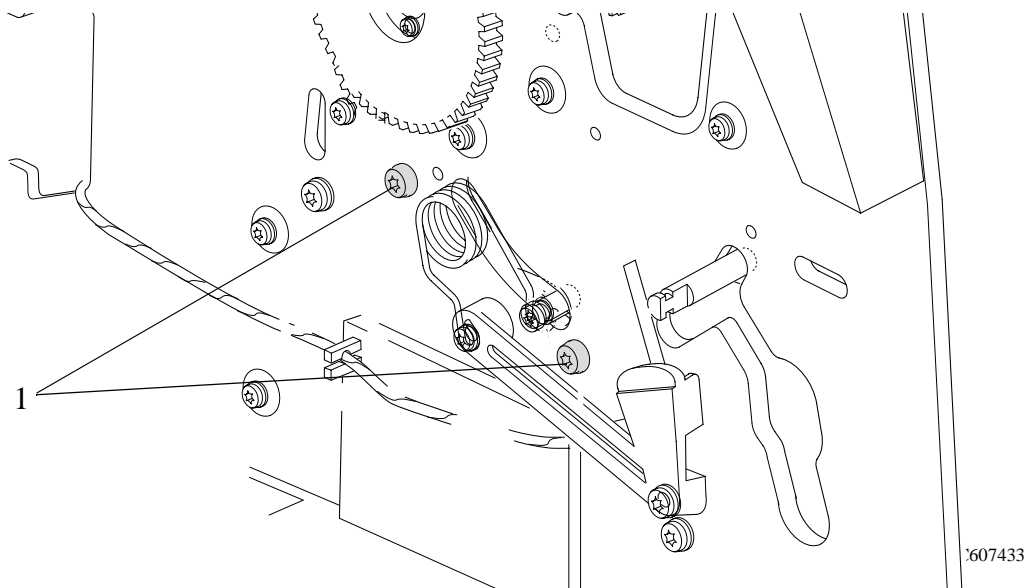
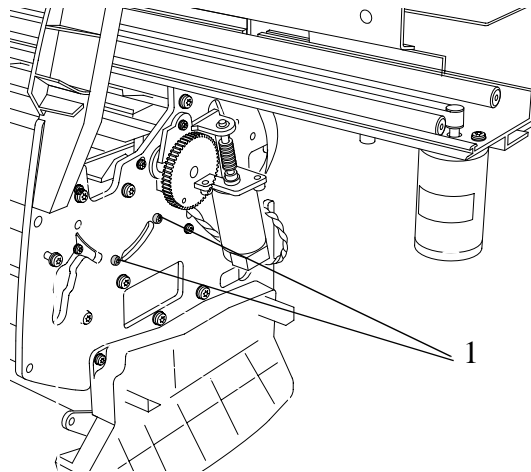


Figure 85: Left Hand Center Guide Screws

4. Remove the two T-15 screws from the right hand side plate securing the right side of the center guide (refer to Figure 86).



C607432

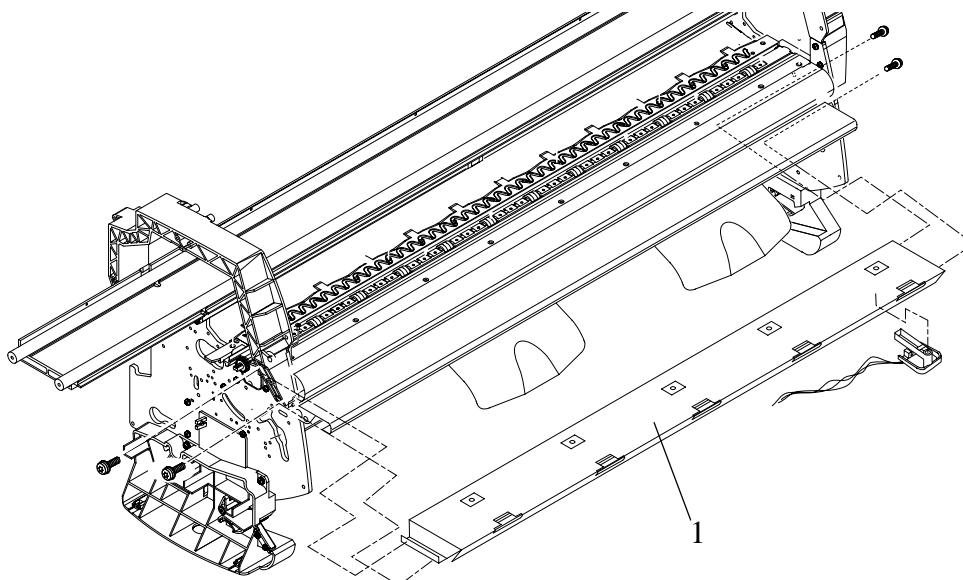
Figure 86: Right Hand Center Guide Screws**NOTE**

For re-installation purposes, note the position of the pins supporting the center guide in place.

NOTE

Working from the front of the printer

5. Remove the center guide (item 1) (refer to Figure 87):
 - a Lift up the front of the center guide
 - b Pull the complete assembly towards you and remove.

**Figure 87: Center Guide**

Pinch-Wheel Assembly and Cam

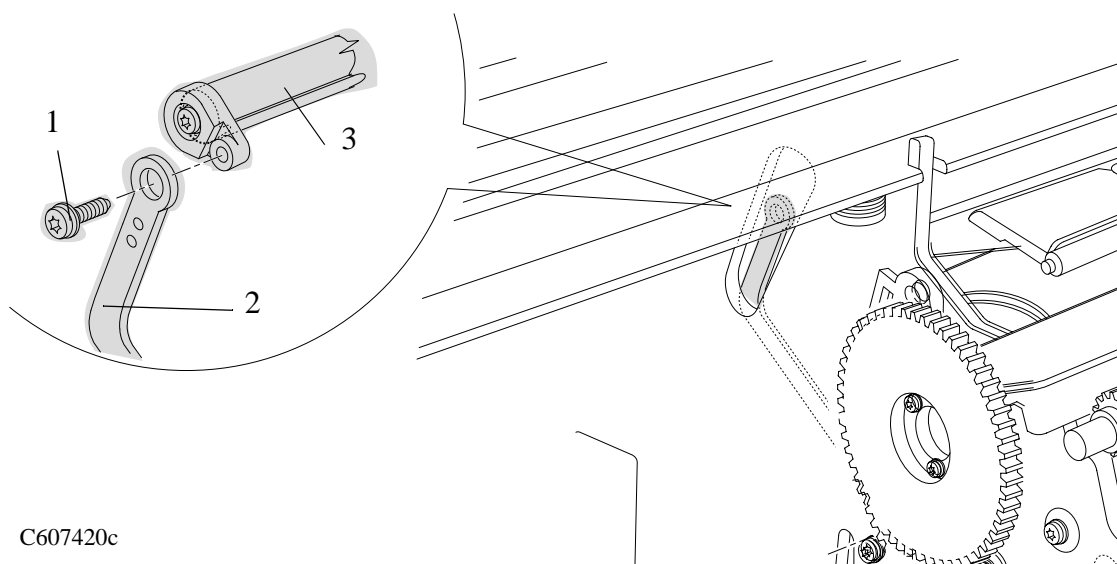
Refer to Figure 88 and Figure 89.

Removal

WARNING

Switch off the printer and remove the power cord.

1. Remove the following:
 1. "Left Hand Cover" see page 8-13.
 2. "Right Hand Cover" see page 8-4.
 3. "Electronics Module" see page 8-25.
 4. "Ink Supply System Assembly" see page 8-19.
 5. "Clutch assembly" see page 8-21.
 6. "Roller Guide" see page 8-74.
2. Remove the T-10 screw (item 1) which secures the linkage rod (item 2) to the pinch-wheel cam (item 3)(refer to Figure 88).



C607420c

Figure 88: Pinch Wheel Cam

NOTE Working from the rear of the printer

NOTE For steps 3 and 4 refer to Figure 89.

3. Remove the twelve T-15 screws (item 1) securing the pinch-arm assemblies (item 2) to the underneath of the scan axis.

NOTE The screws also secure the pinch-wheel cam to the printer. Support the cam as the last of these screws are removed.

4. Remove the cam (item 3) from underneath the scan axis.

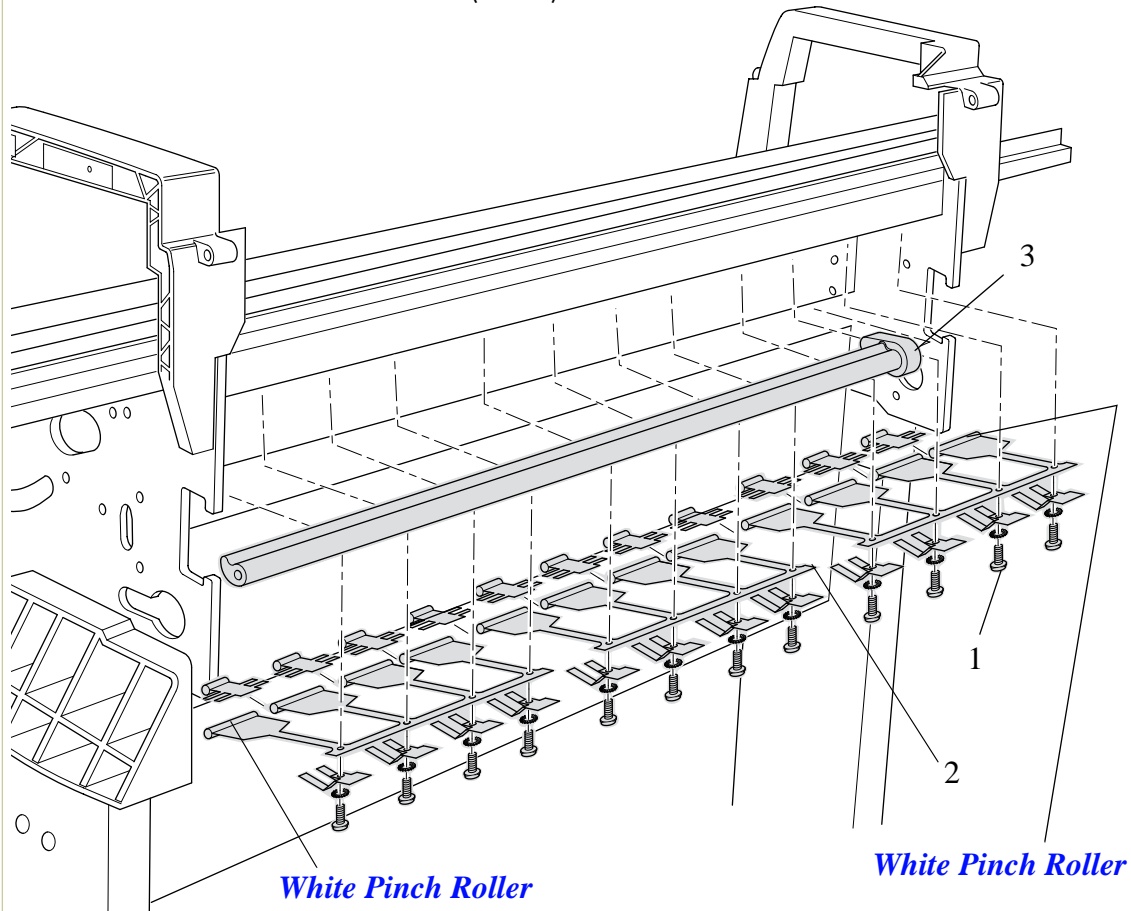


Figure 89: Pinch-arm Assemblies and Cam

NOTE During installation, make sure you install the Pinch Assembly with the White Pinch Rollers at each end.